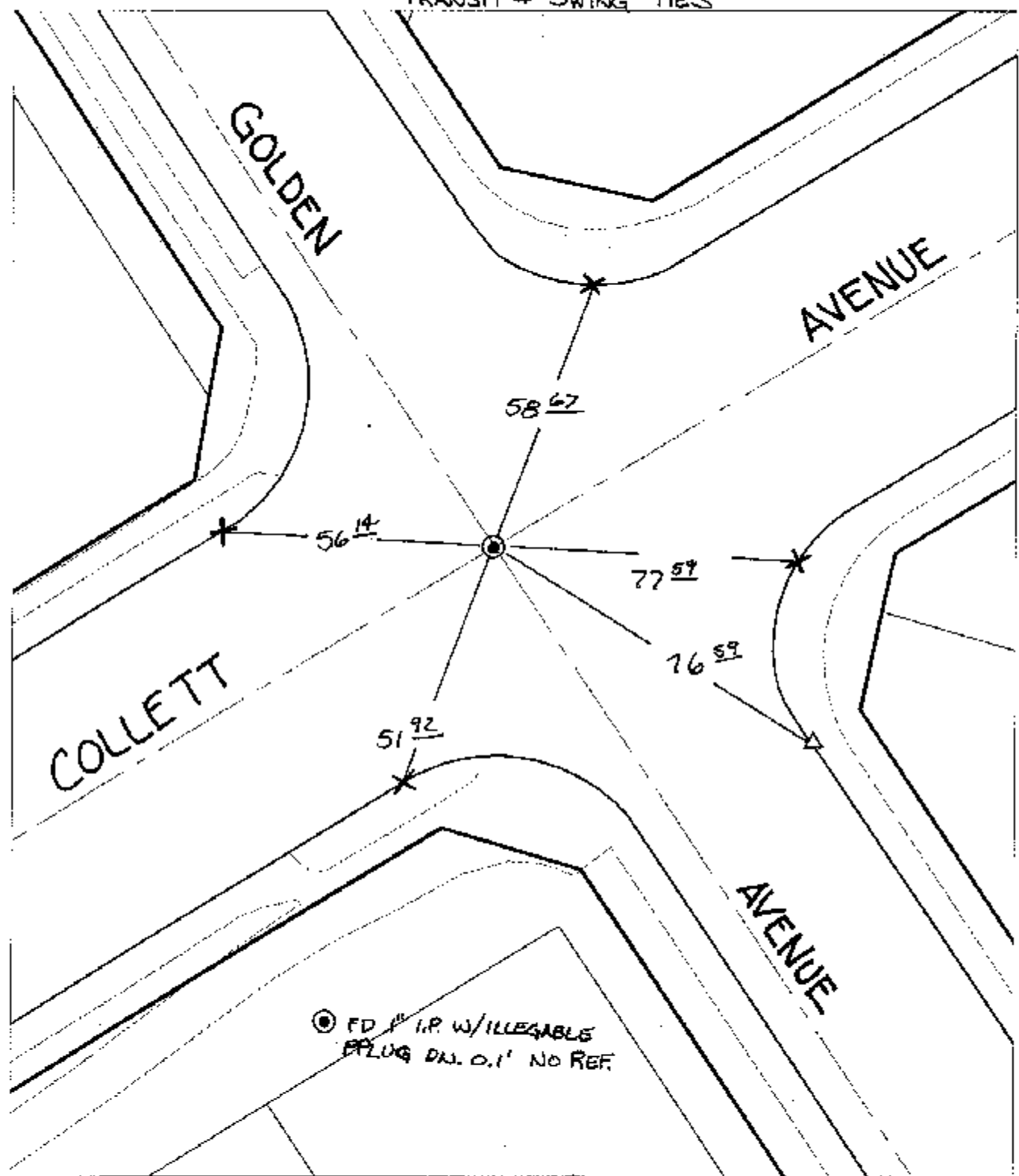


11/20/04 TIF

Street: GOLDEN AVENUE  
X-Street: COLLETT AVENUE  
OFFICIAL USE ONLY

TRANSIT & SWING TIES



⊙ FD 1" I.P. W/ILLEGABLE  
PLUG DIA. 0.1" NO REF.

- ✕ FD. Ramset Nail on T/C    ● FD. LD. & TK. on T/C    P.K. and City Engineer tag to be set @ surface after street construction is complete. (if possible)
- FD. "C" Nail on T/C    ○ Set LD. & TK. on T/C

Scale: 1" = 30'  
 Date: 11/20/04  
 Drawn by: survey  
 F.B.:  
 TR-Sec: T3SR6W-14

## OFFICIAL TIE PLAT

### CITY OF RIVERSIDE

*These ties are for the purpose of perpetuating the found monumentation. No claim is made as to the relationship of the points or lines shown hereon to true boundary locations.*



Sheet 1 of 1  
 Cadme MB: 79-1