

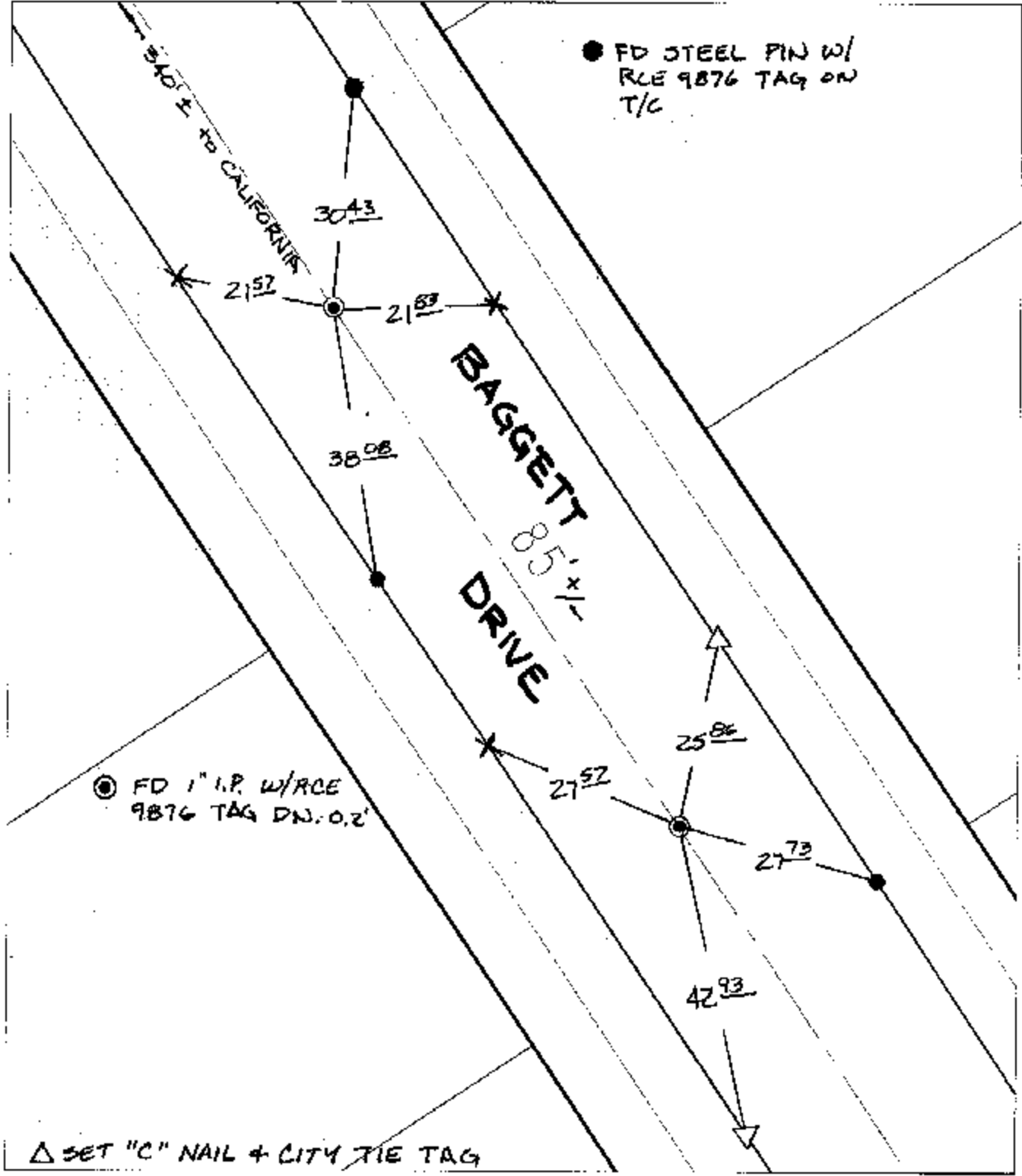
11705.T/F

Street: BAGGETT DRIVE

X-Street: 340 +/- SE OF CALIFORNIA
OFFICIAL USE ONLY

SWING TIES

● FD STEEL PIN W/
RLE 9876 TAG ON
T/C



⊙ FD 1" I.P. W/RCE
9876 TAG DN. 0.2'

△ SET "C" NAIL + CITY TIE TAG

- × FD. Ramset Nail on T/C
- FD. LD. & TK. on T/C
- FD. "C" Nail on T/C
- Set LD. & TK. on T/C

P.K. and City Engineer tag to be set @
surface after street construction is
complete. (If possible)

Scale: 1" = 20'

Date: 11/20/04

Drawn by: survey

F.B.:

TR-Sec: T3SR6W-12

OFFICIAL TIE PLAT

CITY OF RIVERSIDE

*These ties are for the purpose of perpetuating the found
monumentation. No claim is made as to the relationship of
the points or lines shown hereon to true boundary locations.*



Sheet 1 of 1
Cadme MB: 64-8