

TRACT 28491-1

M.B. 282/94-98

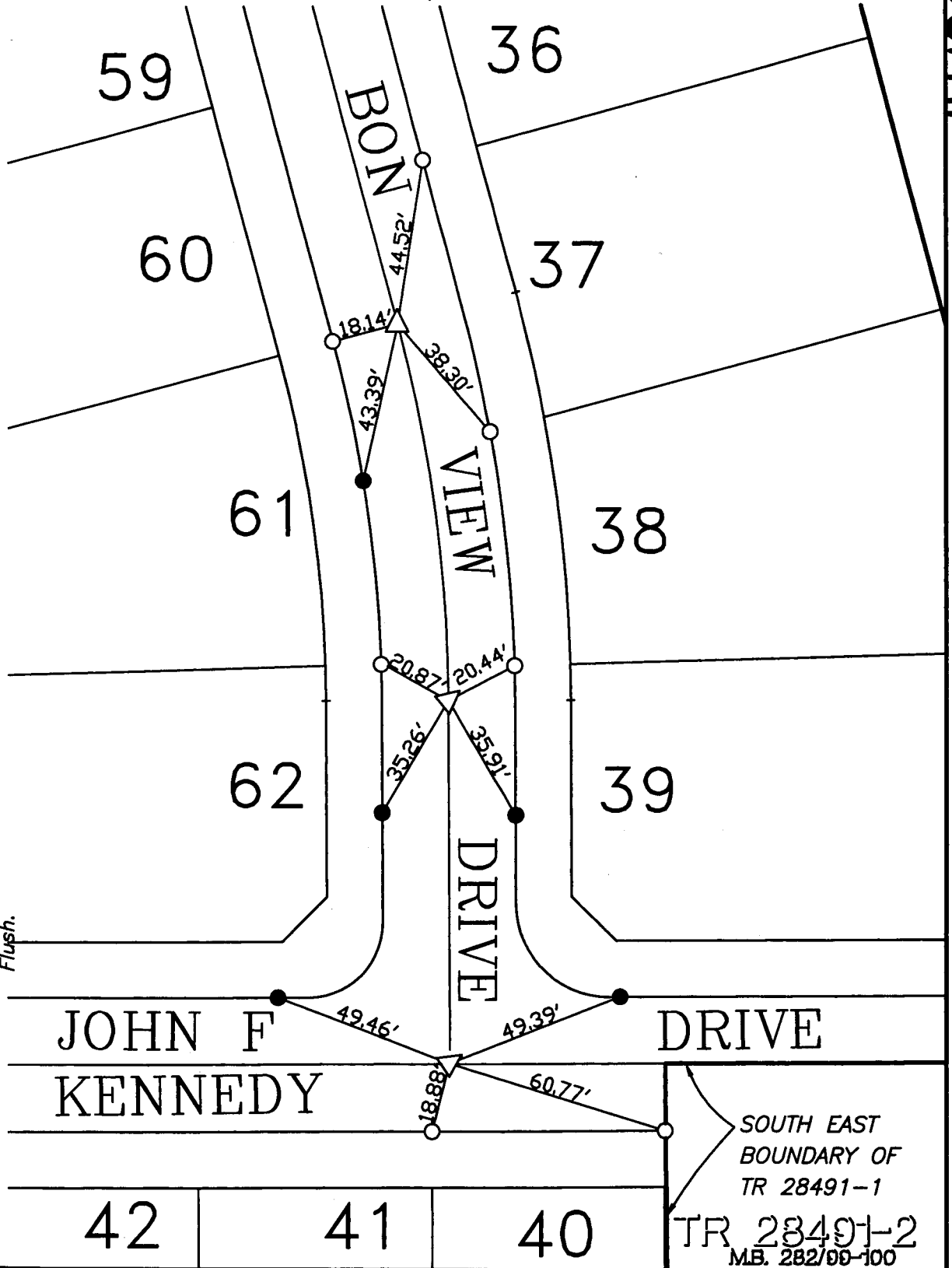
X-STREET BON VIEW DR.

OFFICE USE ONLY

STREET JOHN F. KENNEDY

LEGEND

- -Set Nail on T.C.
- -Set Nail and R.C.E. 17550 Tag in top of curb at the prolongation of side lot lines.
- △ -Set 1/2" Spike and Washer Stamped R.C.E. 17750, Flush.



SCALE: 1" = 40'

DATE: 10 - 2005

DR. BY: C.E.G.

W.O.: 1009-03

--- OFFICIAL TIE PLAT ---

CITY OF RIVERSIDE

PREPARED BY: **C.E.G.** *Canty Engineering Group, Inc.*
 CIVIL ENGINEERING PLANNING SURVEYING

2010 IOWA Avenue, Suite 110, Riverside, CA 92507
 P.O. Box 52050, Riverside, CA 92517 (951) 683-5234 FAX (951) 683-5301

SHEET

6

OF 8 SHEETS

TR 28491-2
 M.B. 282/99-100