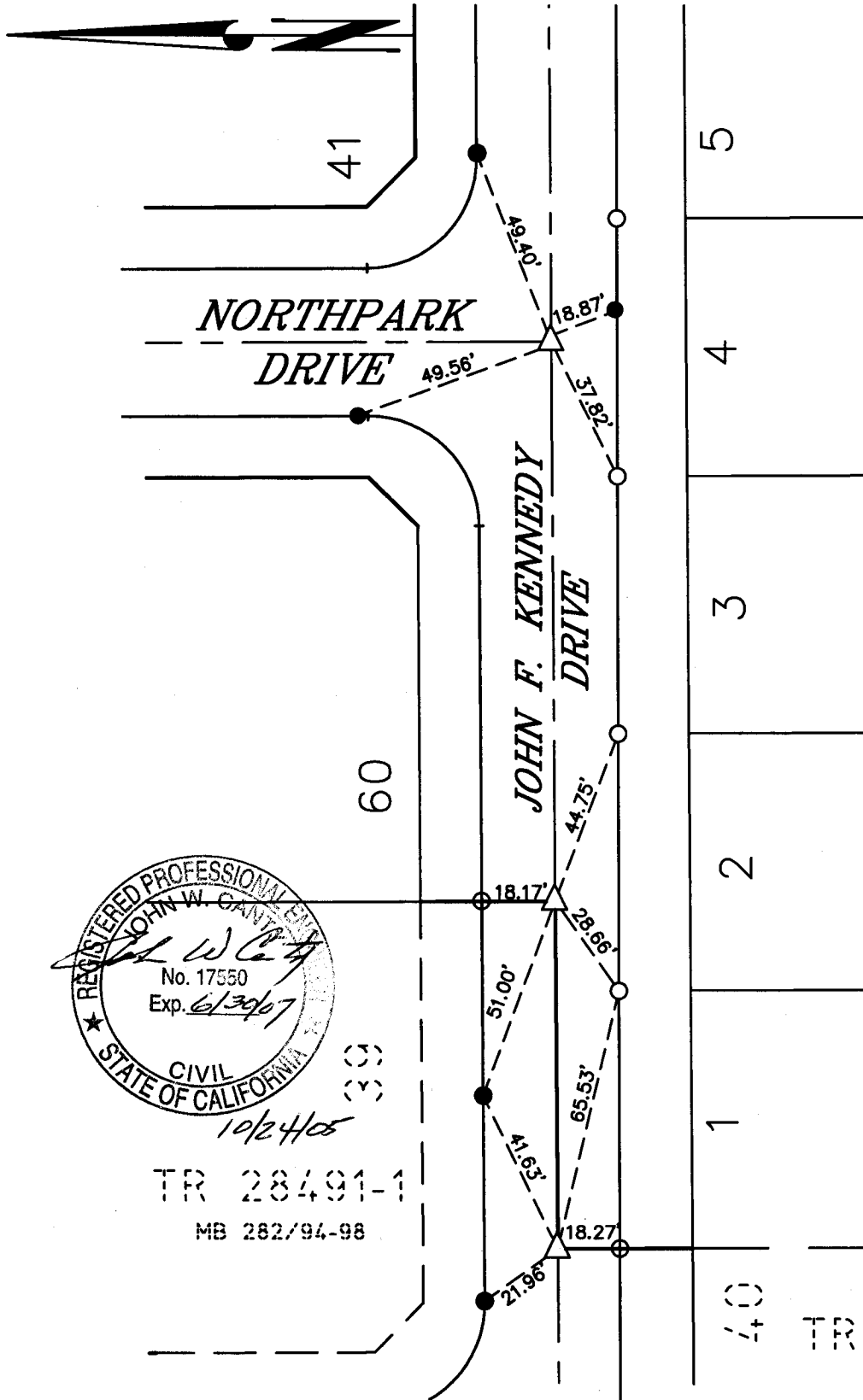


TRACT 28491-2

M.B. 282/99-100

STREET NORTH PARK DR. X-STREET JOHN F. KENNEDY DR.

OFFICE USE ONLY



TR 28491-1
MB 282/94-98

LEGEND

- - Set Ramset Nail On T.C.
- - Set Nail w/R.C.E. 17550 tag on top of curb at prolongation of side lot lines.
- ◁ - Set 1/2" Spike and Washer stamped R.C.E. 17550, Flush.

11809.TIF

SCALE: 1" = 40'

DATE: 2-06-04

DR. BY: C.E.G.

W.O.: 1009-03

--- OFFICIAL TIE PLAT ---
CITY OF RIVERSIDE

PREPARED BY: **C.E.G.** Canty Engineering Group, Inc.
CIVIL ENGINEERING PLANNING SURVEYING

2010 IOWA Avenue, Suite 110, Riverside, CA 92507
P.O. Box 52050, Riverside, CA 92517 (951) 683-5234 FAX (951) 683-5301

SHEET

1

OF 6 SHEETS

40 TR 28491-1