

STREET DEVONCT./DENAIR CT. X-STREET SUNWEST RD./RALSTON PL.

OFFICE USE ONLY

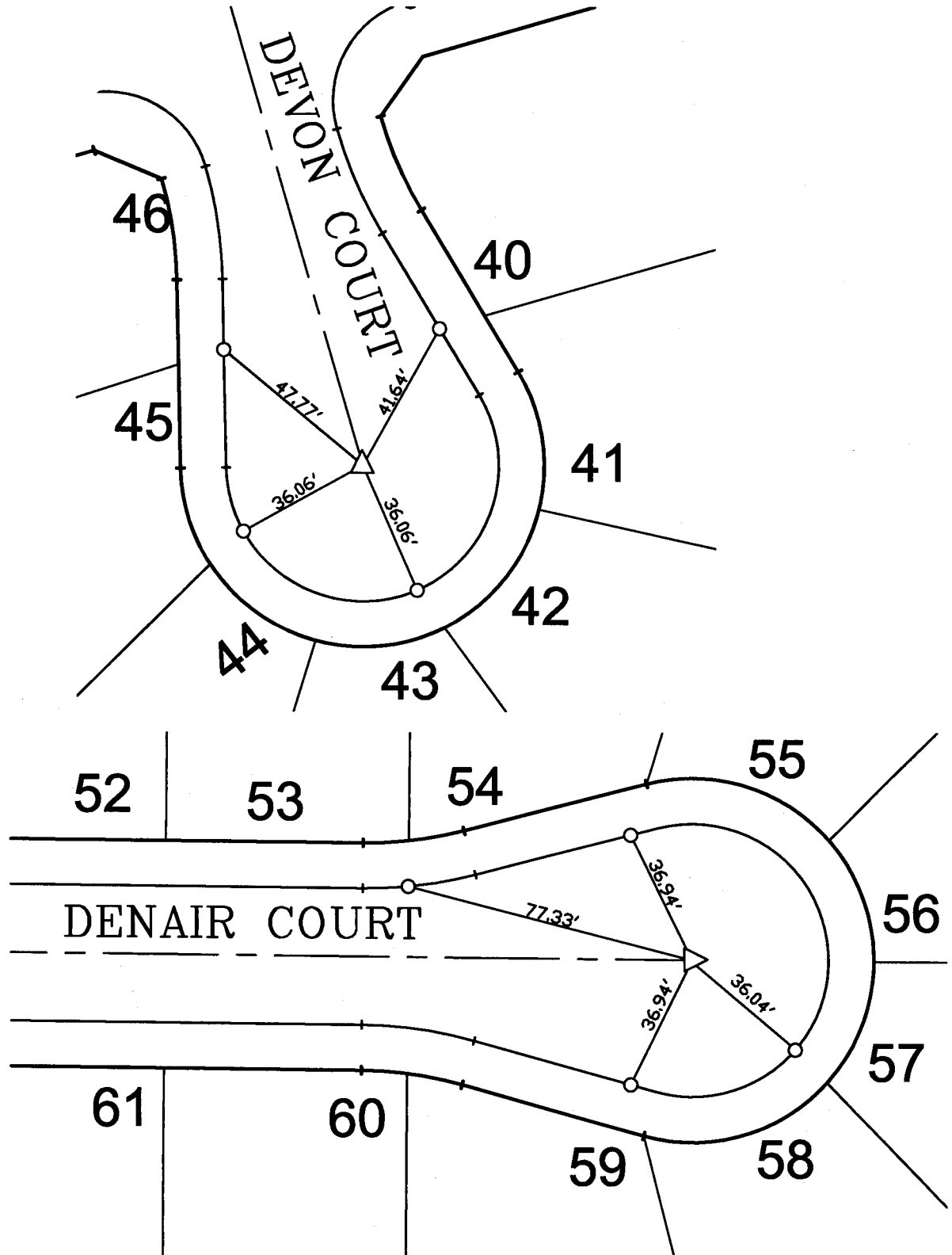
LEGEND

- -Set Nail on T.C.
- -Set Nail and R.C.E. 17550 Tag in top of curb at the prolongation of side lot lines.
- △ -Set 1/2" Spike and Washer stamped R.C.E. 17750, Flush.

TRACT 28491-3

M.B. 283/45-48

11818.TIF



SCALE: 1" = 40'

DATE: 11/14/03

DR. BY: C.E.G.

W.O.: 1009-03

--- OFFICIAL TIE PLAT ---
CITY OF RIVERSIDE

PREPARED BY: C.E.G. Canty Engineering Group, Inc.
CIVIL ENGINEERING PLANNING SURVEYING

2010 IOWA Avenue, Suite 110, Riverside, CA 92507
P.O. Box 52050, Riverside, CA 92517 (951) 683-5234 FAX (951) 683-5301

SHEET

4

OF 8 SHEETS