

TRACT 28491-3

M.B. 283/45-48

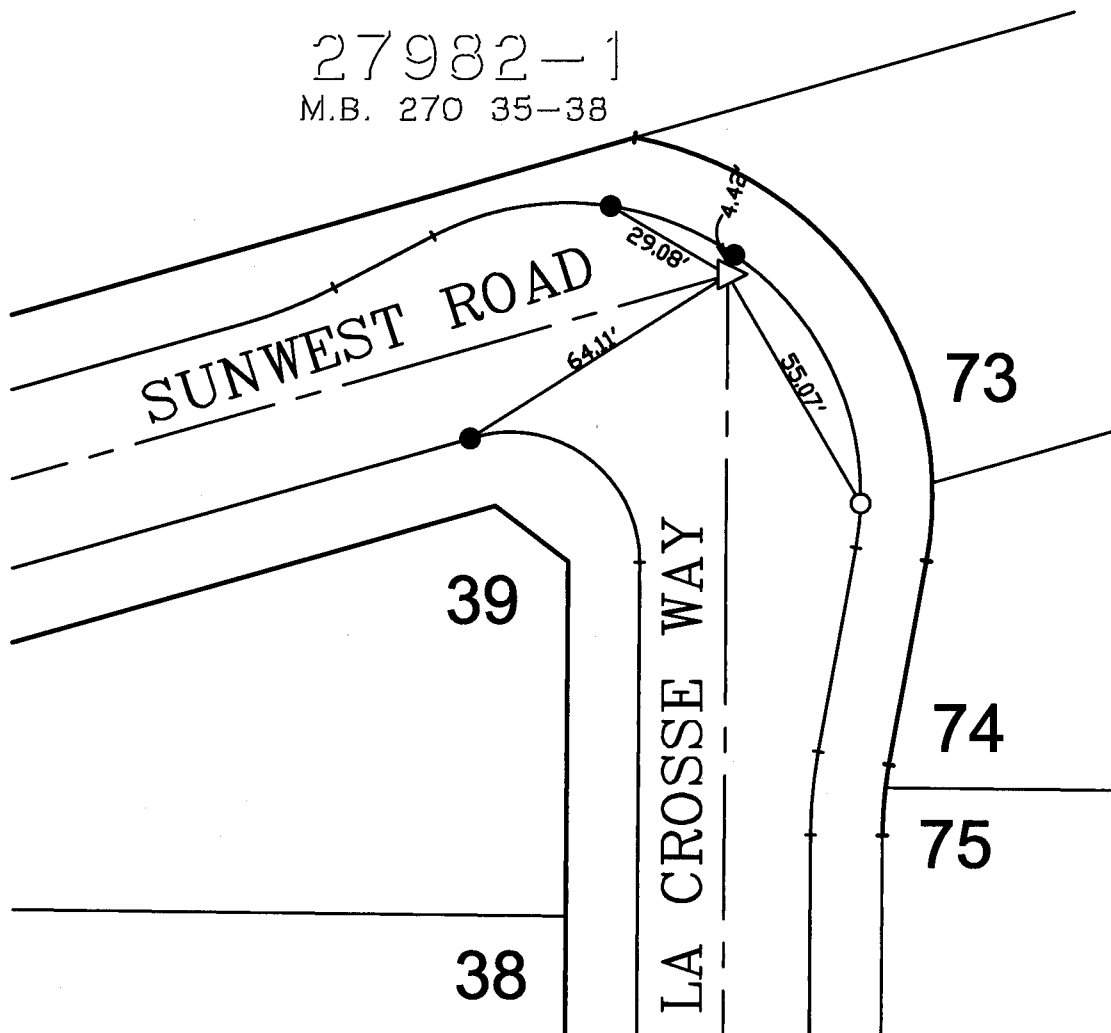
11819.TIF

STREET SUNWEST RD. X-STREET LA CROSSE WY.

OFFICE USE ONLY

LEGEND

- --Set Nail on T.C.
- --Set Nail and R.C.E. 17550 Tag in top of curb at the prolongation of side lot lines.
- △ --Set 1/2" Spike and Washer stamped R.C.E. 17750, Flush.



SCALE: 1" = 40'

DATE: 11/14/03

DR. BY: C.E.G.

W.O.: 1009-03

--- OFFICIAL TIE PLAT ---

CITY OF RIVERSIDE

PREPARED BY: **C.E.G.** *Canty Engineering Group, Inc.*
CIVIL ENGINEERING PLANNING SURVEYING

2010 IOWA Avenue, Suite 110, Riverside, CA 92507
P.O. Box 52050, Riverside, CA 92517 (951) 683-5234 FAX (951) 683-5301

SHEET

5

OF 8 SHEETS