

STREET WEBSTER RD.

X-STREET RALSTON PL.

OFFICE USE ONLY

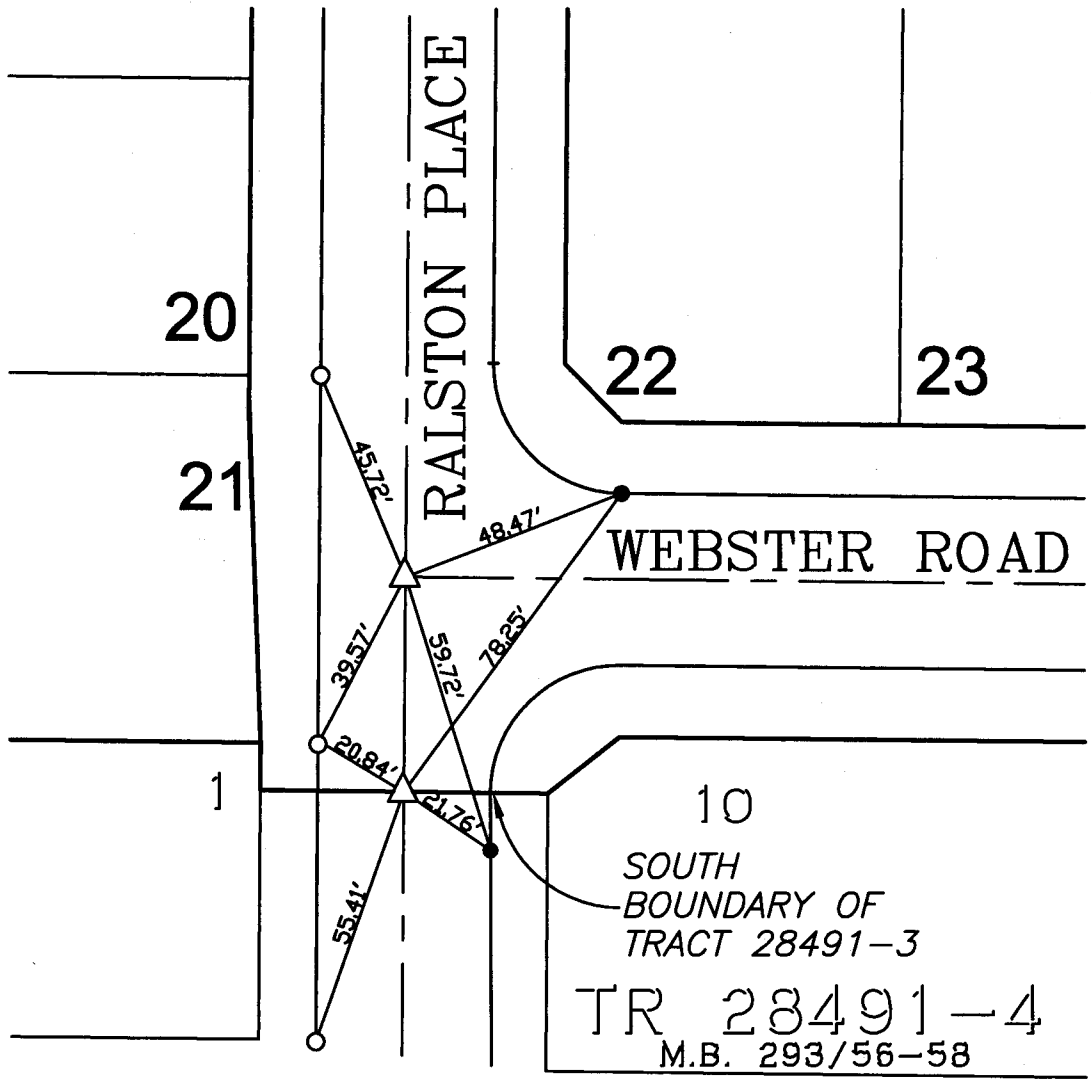
# TRACT 28491-3

M.B. 283/45-48

11821.TIF

### LEGEND

- -Set Nail on T.C.
- -Set Nail and R.C.E. 17550 Tag in top of curb at the prolongation of side lot lines.
- △ -Set 1/2" Spike and Washer stamped R.C.E. 17750, Flush.



SCALE: 1" = 40'
DATE: 11/14/03
DR. BY: C.E.G.
W.O.: 1009-03

**--- OFFICIAL TIE PLAT ---**  
CITY OF RIVERSIDE

PREPARED BY: **C.E.G.** *Canty Engineering Group, Inc.*  
CIVIL ENGINEERING PLANNING SURVEYING

2010 IOWA Avenue, Suite 110, Riverside, CA 92507  
P.O. Box 52050, Riverside, CA 92517 (951) 683-5234 FAX (951) 683-5301

SHEET
7
OF 8 SHEETS