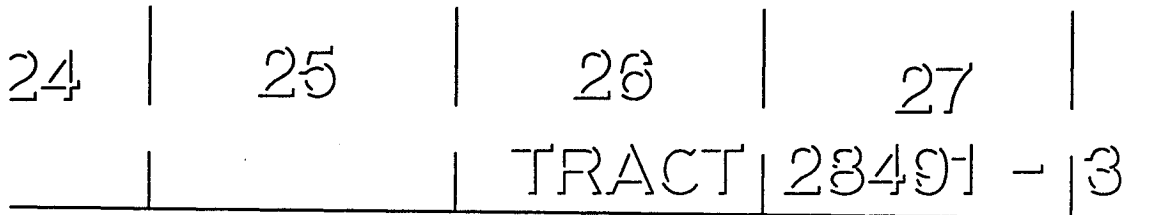


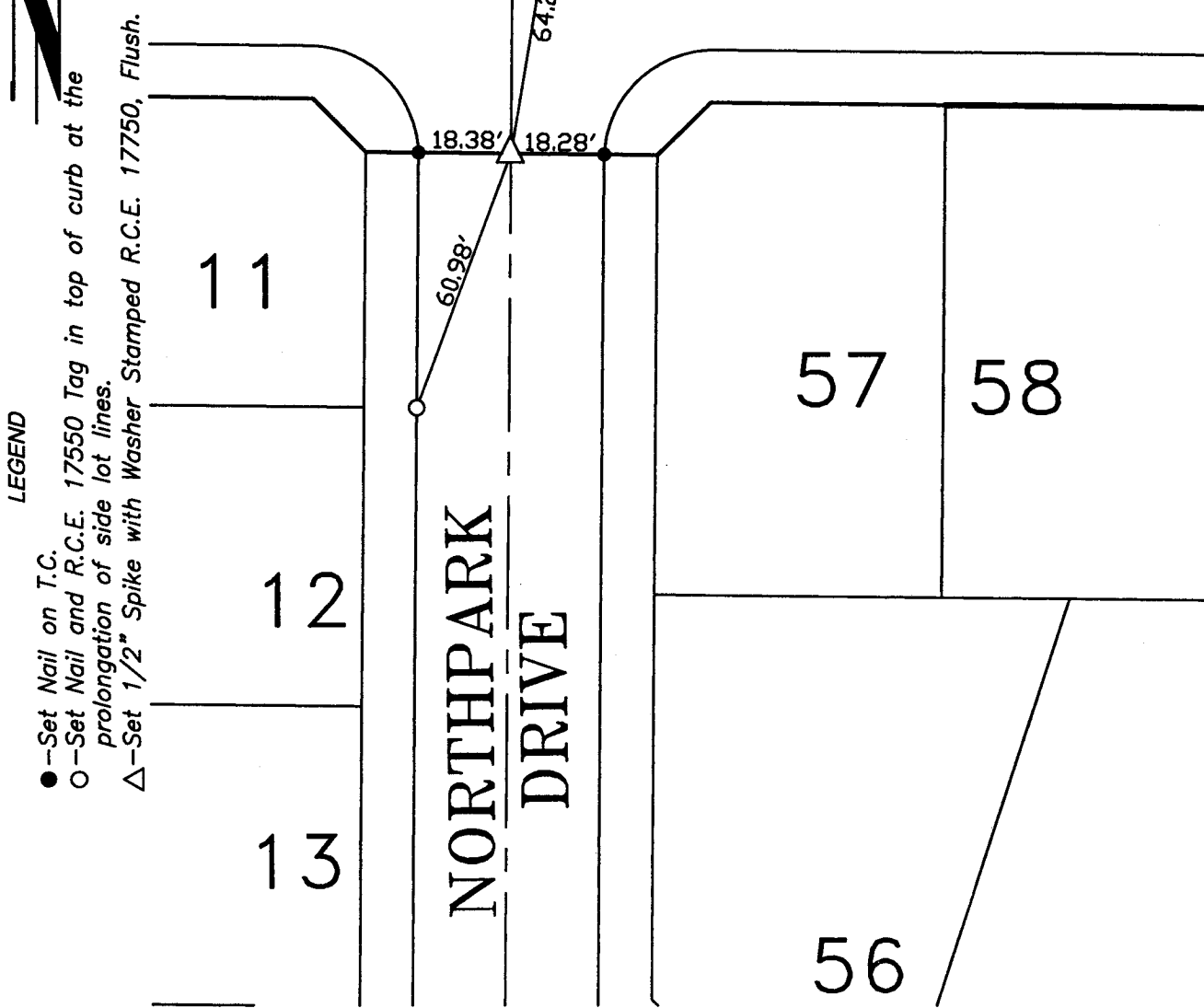
11824.TIF

TRACT 28491-4

M.B. 293/56-58



WEBSTER ROAD



STREET NORTH PARK DR. X-STREET WEBSTER RD.
OFFICE USE ONLY

LEGEND

- -Set Nail on T.C.
- -Set Nail and R.C.E. 17550 Tag in top of curb at the prolongation of side lot lines.
- △ -Set 1/2" Spike with Washer Stamped R.C.E. 17750, Flush.

SCALE: 1" = 40'
DATE: 11/21/03
DR. BY: C.E.G.
W.O.: 1009-03

--- OFFICIAL TIE PLAT ---
CITY OF RIVERSIDE

PREPARED BY: **C.E.G.** *Canty Engineering Group, Inc.*
CIVIL ENGINEERING PLANNING SURVEYING

2010 IOWA Avenue, Suite 110, Riverside, CA 92507
P.O. Box 52050, Riverside, CA 92517 (951) 683-5234 FAX (951) 683-5301

SHEET
2
OF 6 SHEETS