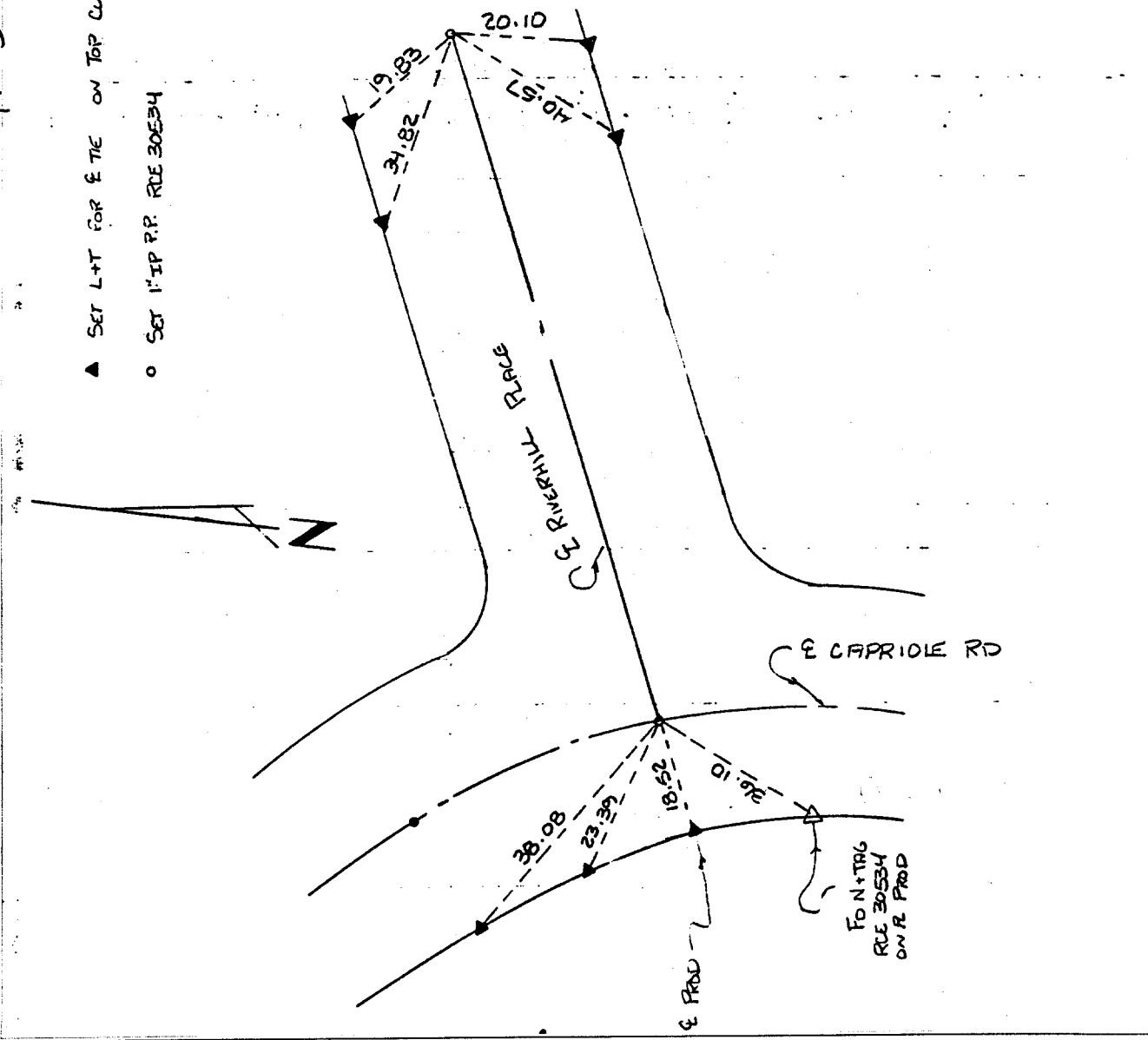


JACKSON LAND RIVERHILL II
& TIES

1185. TIF

- ▲ SET L+T FOR E TIE ON TOP CURVE
- SET 1" IP P.P. RLE 30534



- × FD. Ramset Nail on T/C
- FD. LD. & TK. on T/C
- FD. "C" Nail on T/C
- Set LD. & TK. on T/C

Street: CAPRIOLE RD
X-Street: RIVERHILL PL
OFFICIAL USE ONLY

Scale:
Date:
Drawn by:
W.O.:
F.B.:

OFFICIAL TIE PLAT
CITY OF RIVERSIDE

These ties are for the purpose of perpetuating the found monumentation. No claim is made as to the relationship of the points or lines shown hereon to true boundary locations.

TRACT PM 22580
Sheet 1 of 1
File No.: