

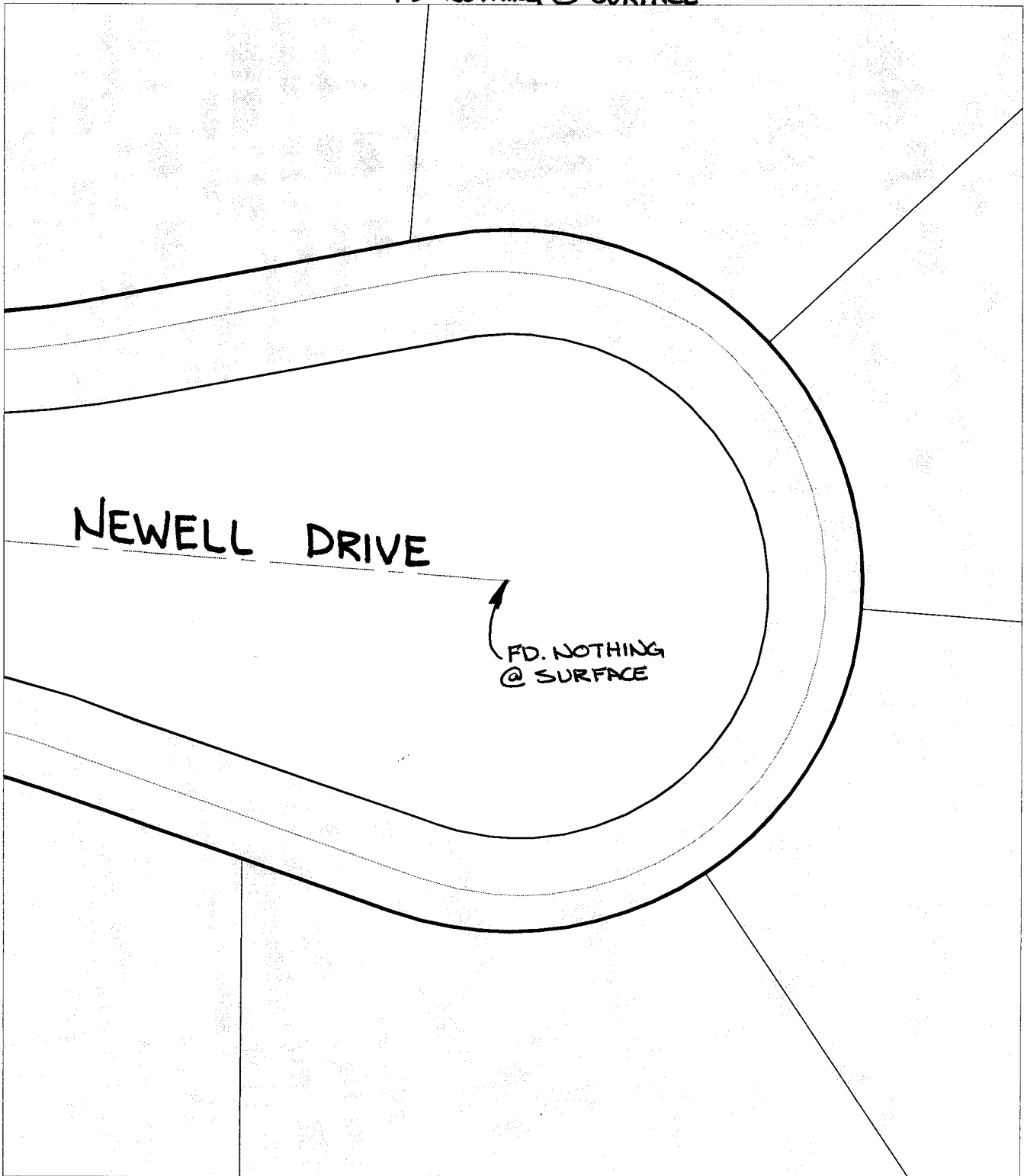
Street:

NEWELL DRIVE

X-Street:  
OFFICIAL USE ONLY

CUL-DE-SAC

FD NOTHING @ SURFACE



- ✕ FD. Ramset Nail on T/C      ● FD. LD. & TK. on T/C
- FD. "C" Nail on T/C      ○ Set LD. & TK. on T/C

*P.K. and City Engineer tag to be set @ surface after street construction is complete. (If possible)*

Scale: 1" = 20'  
 Date: 01/20/06  
 Drawn by: scurtis  
 F.B.:  
 TR-Sec: T2SR4W-20

## OFFICIAL TIE PLAT

### CITY OF RIVERSIDE

*These ties are for the purpose of perpetuating the found monumentation. No claim is made as to the relationship of the points or lines shown hereon to true boundary locations.*



Sheet 1 of 1  
 Cadme MB: 27-8