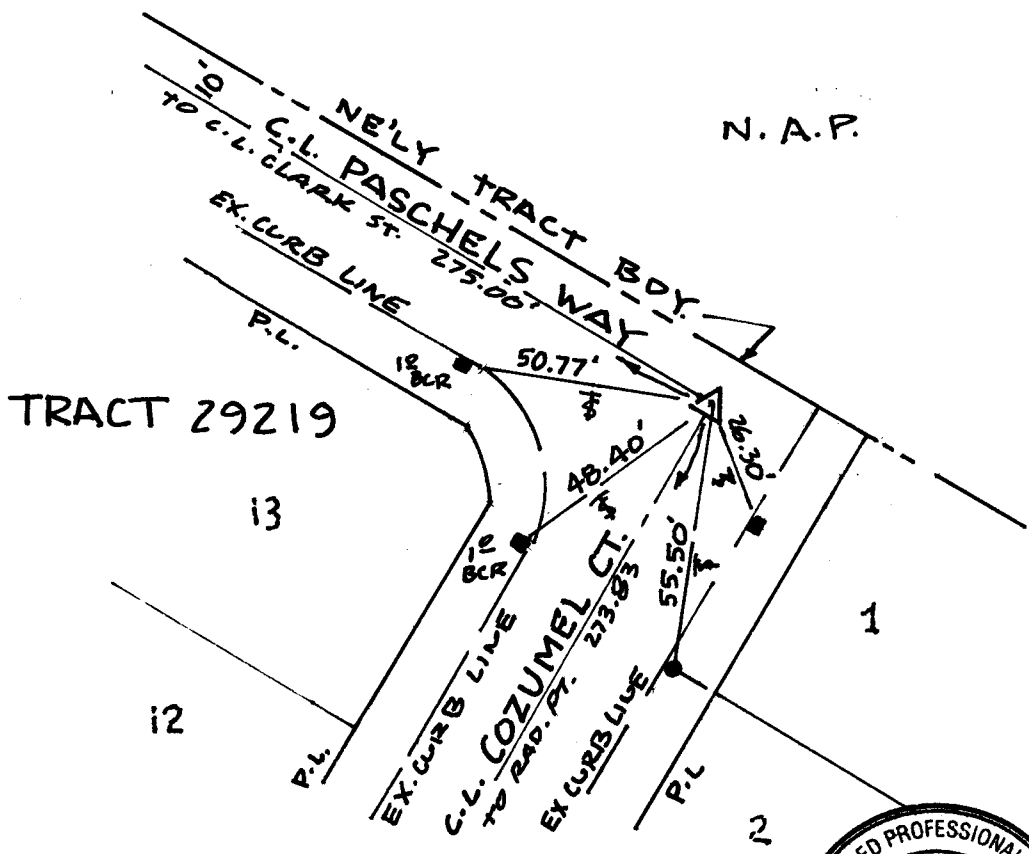


11975.71E

Street: COZUMEL CT. X-Street: PASCHELS WAY

OFFICIAL USE ONLY

N. A. P.



LINVILLE CIVIL ENGINEERS  
LAND SURVEYORS, INC.

*Kenneth N. Linville* 1/31/01  
KENNETH N. LINVILLE

LEGEND

- - FD. NAIL IN LEAD TAGGED "RCE 20300" ON TC @ P.L. PROD
- - FD NAIL ON TC
- △ - FD SPK TAGGED "RCE 20300" @ C.L. INT.

Scale: 1"=40'  
 Date: 1/31/01  
 Drawn by: KNL

**OFFICIAL TIE PLAT**  
**CITY OF RIVERSIDE**

*These ties are for the purpose of perpetuating the found monumentation. No claim is made as to the relationship of the points or lines shown hereon to true boundary locations.*

Sheet 1 of 1  
 File No.: