

TIES FOR TRACT 21767-1  
 MAP BOOK 177 PAGES 65-69

APPROX NORTH  
 NOT TO SCALE



LEGEND:

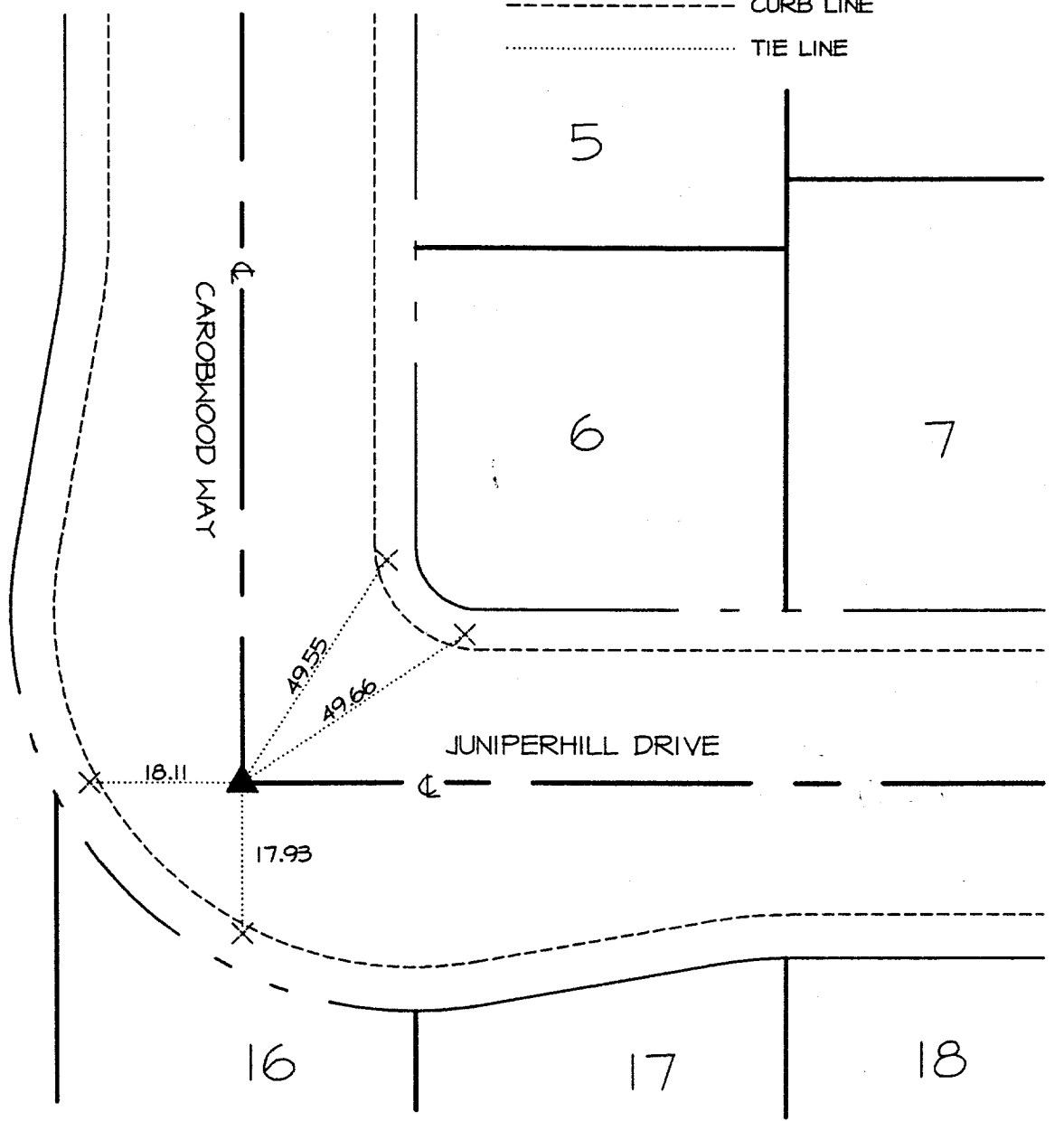
▲ 1" I.P. TAGGED "L.S. 4131"

✕ ALL TIE POINTS ARE LEAD AND TACK  
 SET IN TOP OF CURB, UNLESS OTHERWISE NOTED

----- CURB LINE

..... TIE LINE

SEE SHEET 10



OFFICE USE ONLY

STREET JUNIPERHILL DRIVE

X-STREET CAROBWOOD WAY

SEE SHEET 8

SCALE: NONE  
 DATE: 4-11-95  
 DR. BY: T.Propst  
 W.O.: 218.0102.01  
 F.B.:

OFFICIAL TIE PLAT  
 CITY OF RIVERSIDE  
 PREPARED BY: **FUSCOE**  
**ENGINEERING**  
 16735 Von Karman, Suite 100  
 Irvine, California 92714  
 Phone (714) 474-1960

SHEET  
**9**  
 OF 10 SHEETS  
 FILE NO.:

1210.01F