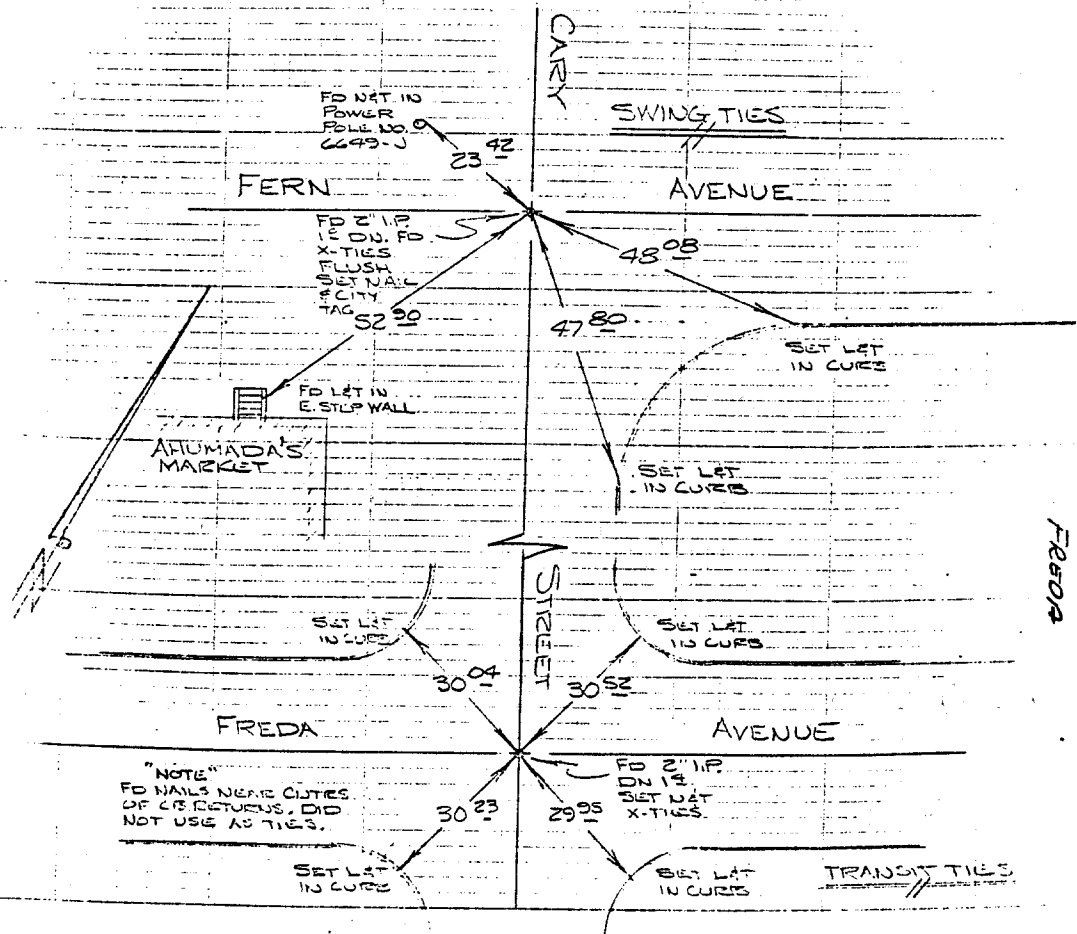


218.811

TRANSIT & SWING TIES

HISTORICAL DATA

CREW:
STEELE
JORDAN
JUNE 28, 1968



@ Fern
Freda
CARY ST.
852/19

"NOTE"
FD NAILS NEAR CURBS
OF CB. RETURN. DID
NOT USE AS TIES.

- × FD. Ramset Nail on T/C
- FD. LD. & TK. on T/C
- FD. "C" Nail on T/C
- Set LD. & TK. on T/C

Scale:
Date:
Drawn by:
W.O.:
F.B.:

OFFICIAL TIE PLAT

CITY OF RIVERSIDE

These ties are for the purpose of perpetuating the found monumentation. No claim is made as to the relationship of the points or lines shown hereon to true boundary locations.

Sheet 1 of 1
File No.:

Street: CARY ST.
X-Street: FERN & FREDA
OFFICIAL USE ONLY