

1223.TIF

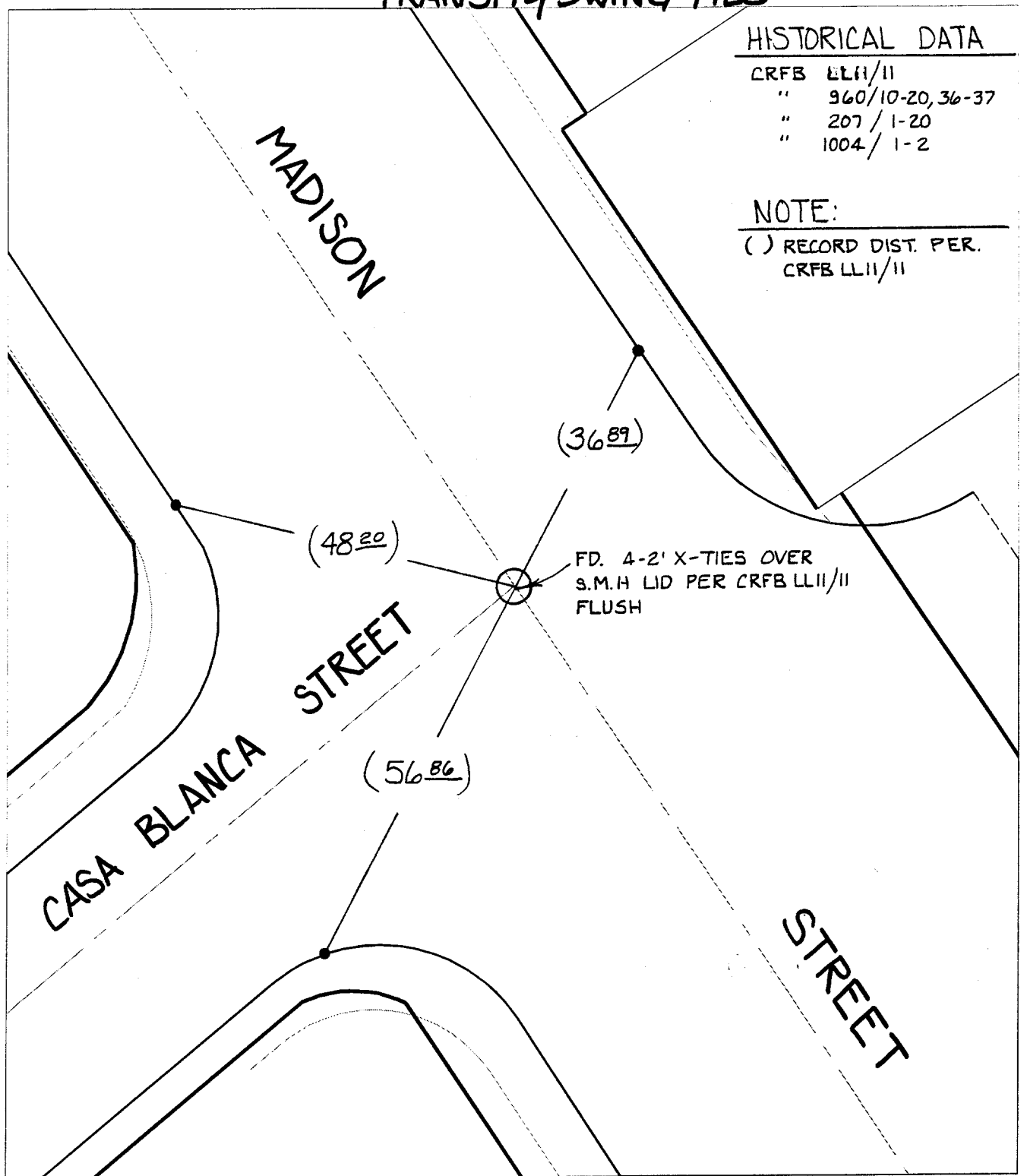
TRANSIT & SWING TIES

HISTORICAL DATA

CRFB	LL11/11
"	960/10-20, 36-37
"	207 / 1-20
"	1004 / 1-2

NOTE:

( ) RECORD DIST. PER. CRFB LL11/11



Street:

MADISON STREET

X-Street: OFFICIAL USE ONLY

CASA BLANCA STREET

✕ FD. Ramset Nail on T/C  
 ■ FD. "C" Nail on T/C

● FD. LD. & TK. on T/C  
 ○ Set LD. & TK. on T/C

Scale: 1" = 20'  
 Date: 02/10/00  
 Drawn by: SURVEY  
 W.O.:  
 F.B.:

**OFFICIAL TIE PLAT**  
CITY OF RIVERSIDE

*These ties are for the purpose of perpetuating the found monumentation. No claim is made as to the relationship of the points or lines shown hereon to true boundary locations.*



Sheet 1 of 1  
 File No.: