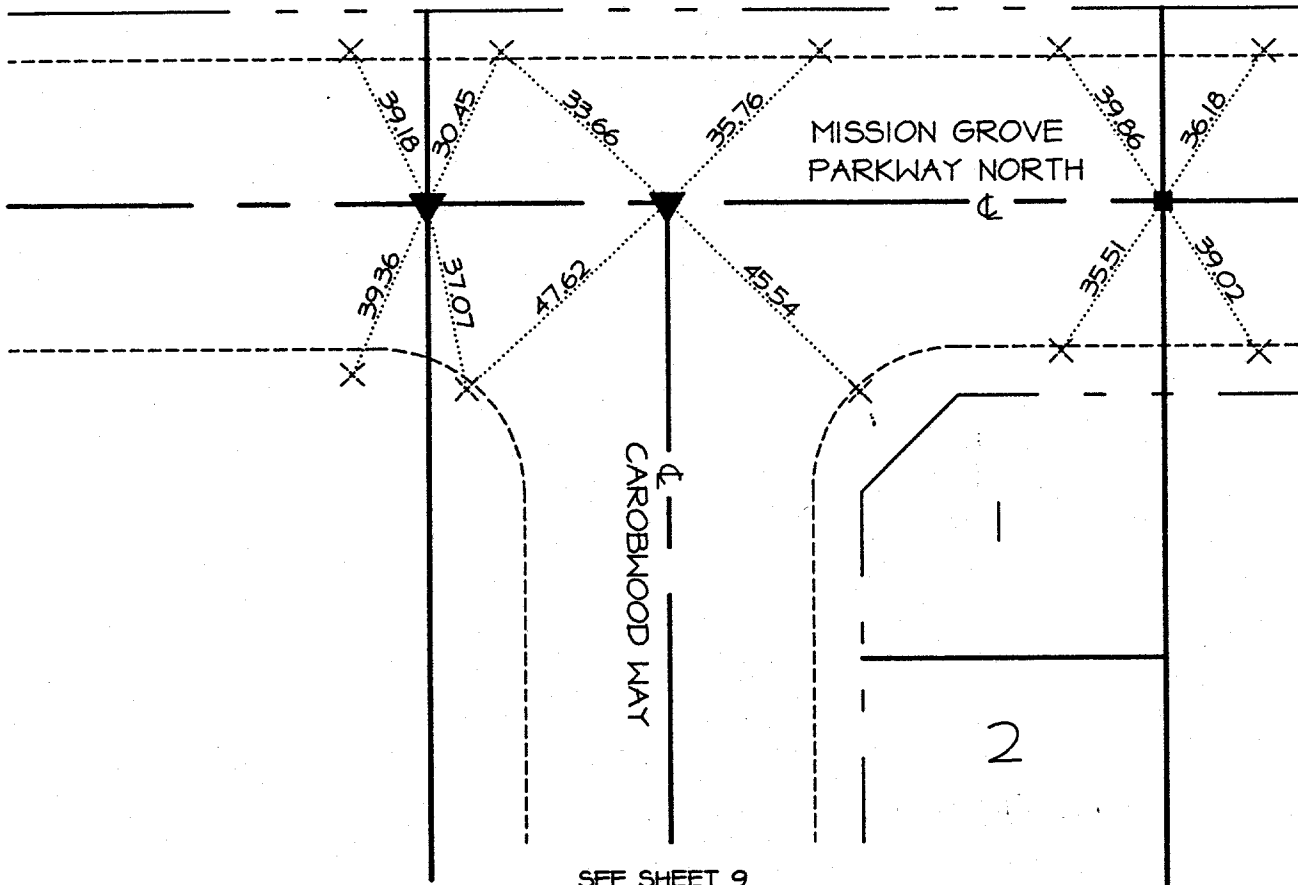


1232.TIF

TIES FOR TRACT 21767-1
MAP BOOK 177 PAGES 65-69

APPROX NORTH
NOT TO SCALE



SEE SHEET 9

LEGEND:

▲ 1" I.P. TAGGED "L.S. 4131"

■ LEAD, TACK & TAG "L.S. 4131"

X ALL TIE POINTS ARE LEAD AND TACK
SET IN TOP OF CURB, UNLESS OTHERWISE NOTED

----- CURB LINE

..... TIE LINE

STREET Carobwood Way

OFFICE USE ONLY

X-STREET Mission Grove Parkway North

SCALE: NONE
DATE: 4-11-95
DR. BY: T.Propst
W.O.: 218.0102.01
F.B.:

PREPARED BY:

OFFICIAL TIE PLAT
CITY OF RIVERSIDE

FUSCOE
ENGINEERING

16735 Von Karman, Suite 100
Irvine, California 92714
Phone (714) 474-1960

SHEET

10

OF 10 SHEETS

FILE NO.: