

SWING & TRANSIT TIES

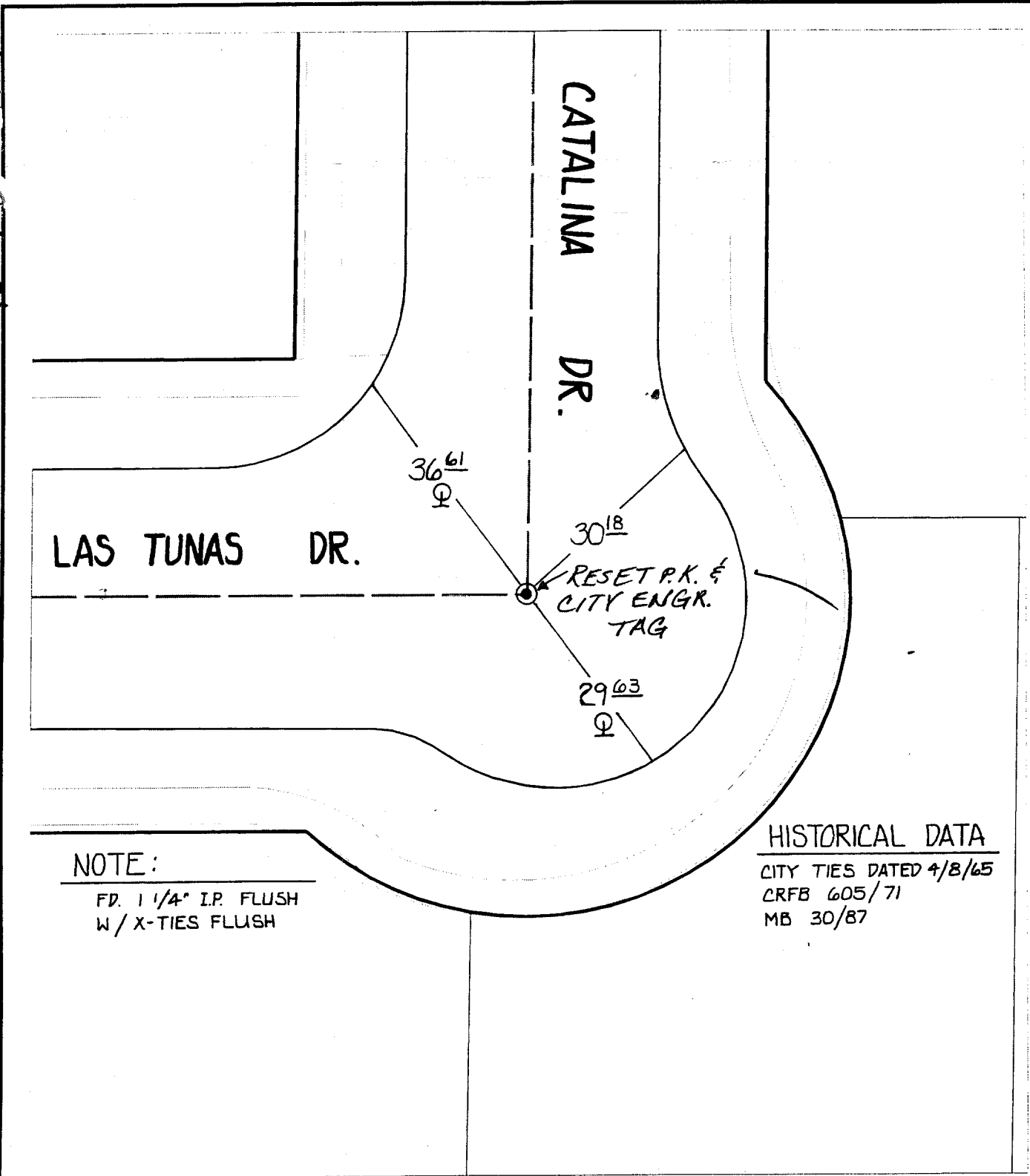
1242.TIF

Street: 1242.TIF

CATALINA DR.

X-Street: OFFICIAL USE ONLY

LAS TUNAS DR.



NOTE:

FD. 1 1/4" I.P. FLUSH
W/ X-TIES FLUSH

HISTORICAL DATA
CITY TIES DATED 4/8/65
CRFB 605/71
MB 30/87

- ✕ FD. Ramset Nail on T/C
- FD. LD. & TK. on T/C
- FD. "C" Nail on T/C
- Set LD. & TK. on T/C

Scale: 1" = 20'
Date: 11/23/99
Drawn by: SURVEY
W.O.:
F.B.:

OFFICIAL TIE PLAT CITY OF RIVERSIDE

These ties are for the purpose of perpetuating the found monumentation. No claim is made as to the relationship of the points or lines shown hereon to true boundary locations.



Sheet 1 of 1
File No.: