

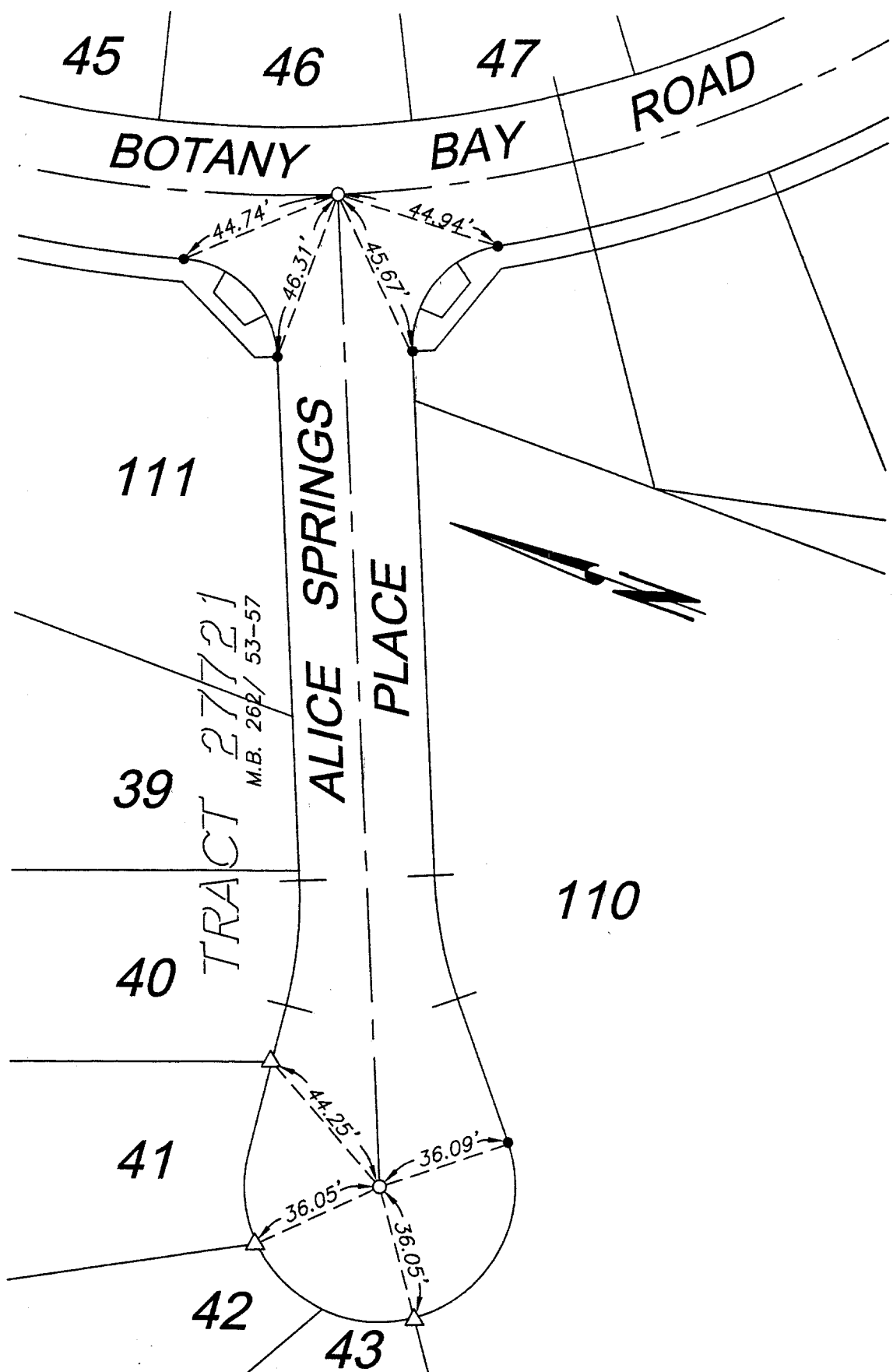
STREET ALICE SPRINGS PLACE X-STREET **BOTANY BAY ROAD**

OFFICE USE ONLY

125.7/F

LEGEND

- -Set Ramset Nail On T.C.
- △ -Set Nail and R.C.E. 17550 Tag in top of concrete curb at the prolongation of side lot lines.
- -Set 1/2" Spike w/washer stamped R.C.E. 17550, Flush.



SCALE: N.T.S

DATE: 7-10-00

DR. BY: C.E.G.

W.O.: 1003-001

--- OFFICIAL TIE PLAT ---
CITY OF RIVERSIDE

PREPARED BY: **C.E.G.** Cauty Engineering Group, Inc.
CIVIL ENGINEERING PLANNING SURVEYING

2020 IOWA Avenue, Suite 102, Riverside, CA 92507
P.O. Box 52050, Riverside, CA 92517 (909) 683-5234 FAX (909) 683-5301

SHEET

5

OF 9 SHEETS