

126.71F

F.B. 1039

DATE 131

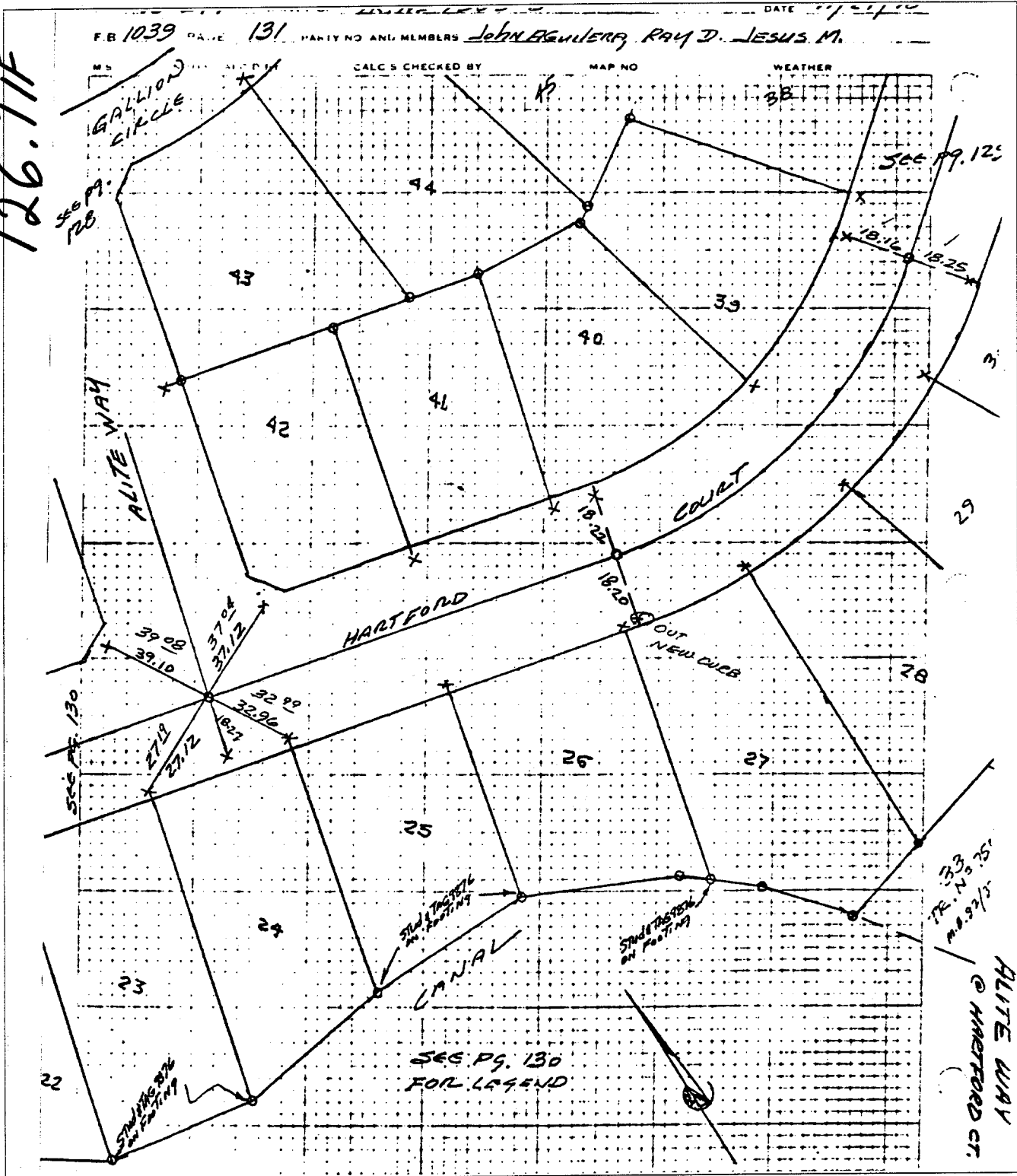
PARTY NO AND MEMBERS JOHN AGUILERA, RAY D. JESUS M.

DATE 11/21/10

CALC'S CHECKED BY

MAP NO

WEATHER



- × FD. Ramset Nail on T/C
- FD. LD. & TK. on T/C
- FD. "C" Nail on T/C
- Set LD. & TK. on T/C

Street: ALITE WAY

X-Street: HARTFORD CT.

OFFICIAL USE ONLY

Scale:

Date:

Drawn by:

W.O.:

F.B.:

OFFICIAL TIE PLAT

CITY OF RIVERSIDE

These ties are for the purpose of perpetuating the found monumentation. No claim is made as to the relationship of the points or lines shown hereon to true boundary locations.

Sheet 1 of 1

File No.: