

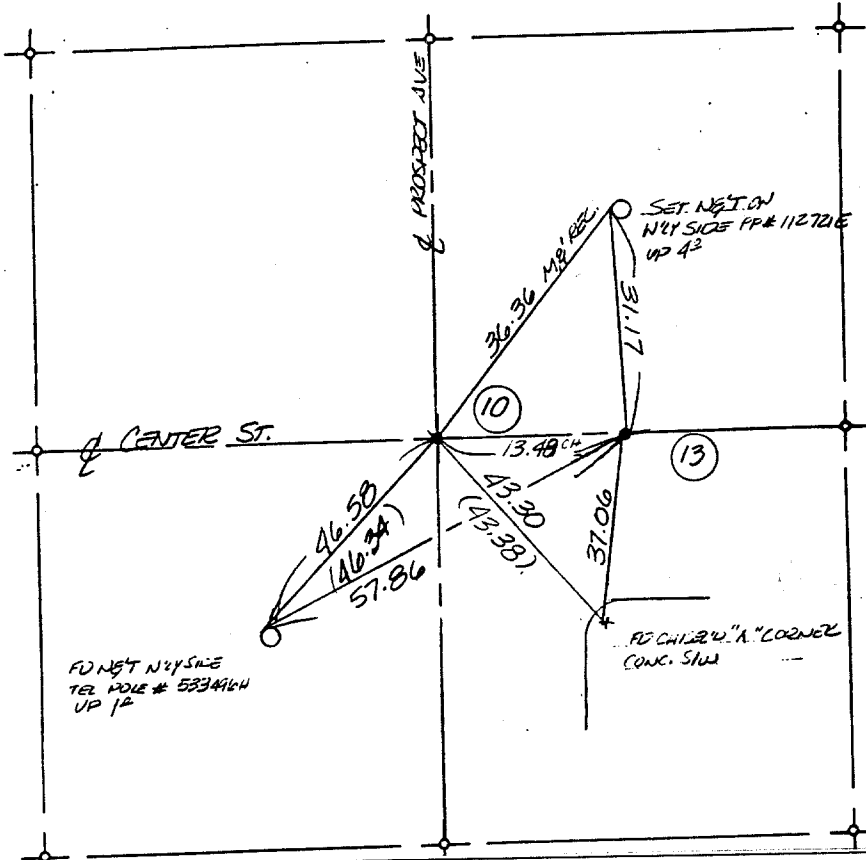
FILED 1961

6 OF 14

CENTER ST TB. 82/13 FB 2121
RIVERSIDE COUNTY SURVEY DEPARTMENT RECOVERY NOTES S-5415

SEC. 7 TWP. 25 RGE. 7W
DATE 11-10-86 TEMP. 85 W.O. NO. 82-7556
PARTY LILES, PINA GARRER, ALGER AGENCY

- 10 FD 2"x2" W/TACK DN 0² PER FB 2042, S# 4868, PG 2
SET N&T "X" TIES PL.
- 13 FD BR. S&KE W/P.M. DN 0² PER FB 2042 S# 4868, PG 2
SET N&T TO TAB W/ N&T "X" TIES FL. PC. STA 23+42.92
- 2 - REC. DATA PER FB 627/18, TB 5126



- ✗ FD. Ramset Nail on T/C
- FD. LD. & TK. on T/C
- FD. "C" Nail on T/C
- Set LD. & TK. on T/C

Street: CENTER ST. X-Street: HIGHGROVE
OFFICIAL USE ONLY

Scale:
Date:
Drawn by:
W.O.:
F.B.:

OFFICIAL TIE PLAT
CITY OF RIVERSIDE

These ties are for the purpose of perpetuating the found monumentation. No claim is made as to the relationship of the points or lines shown hereon to true boundary locations.

Sheet 1 of 1
File No.: