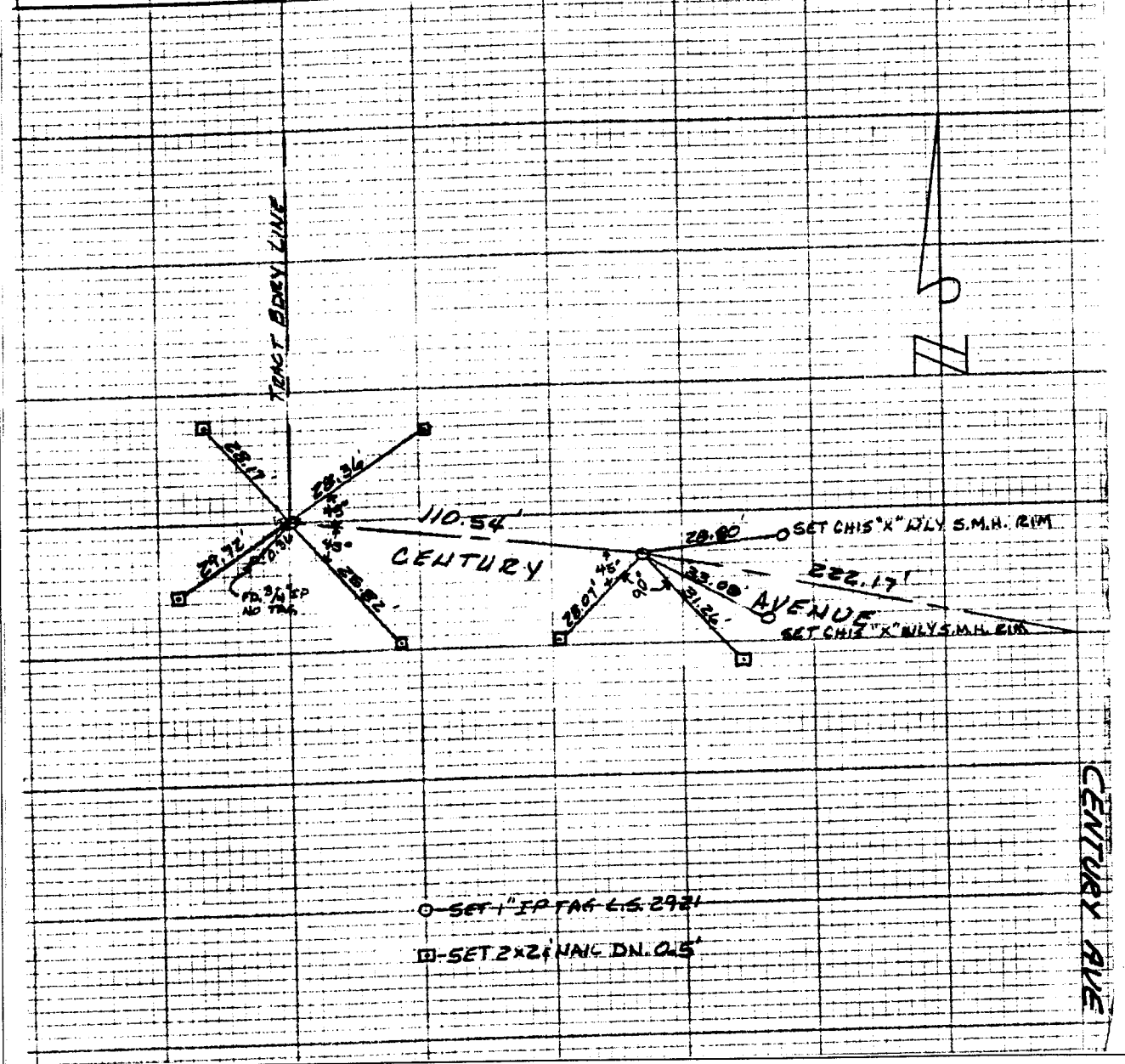


211.2821

VTN CONSOLIDATED
TR. # 4111
COPY

W/LY TRACT BDDY
AND
1ST ANGLE PT. EAST
FIELD CKD. BY J.H.T.
2/76

TRANSIT TIES TO
TRACT BOUNDARY
SWING TIES TO
ANGLE POINT



- ✕ FD. Ramset Nail on T/C
- FD. LD. & TK. on T/C
- FD. "C" Nail on T/C
- Set LD. & TK. on T/C

Scale:
Date:
Drawn by:
W.O.:
F.B.:

OFFICIAL TIE PLAT CITY OF RIVERSIDE

*These ties are for the purpose of perpetuating the found
monumentation. No claim is made as to the relationship of
the points or lines shown hereon to true boundary locations.*

Sheet 1 of 1
File No.:

Street: CENTURY AVE
X-Street: _____
OFFICIAL USE ONLY