

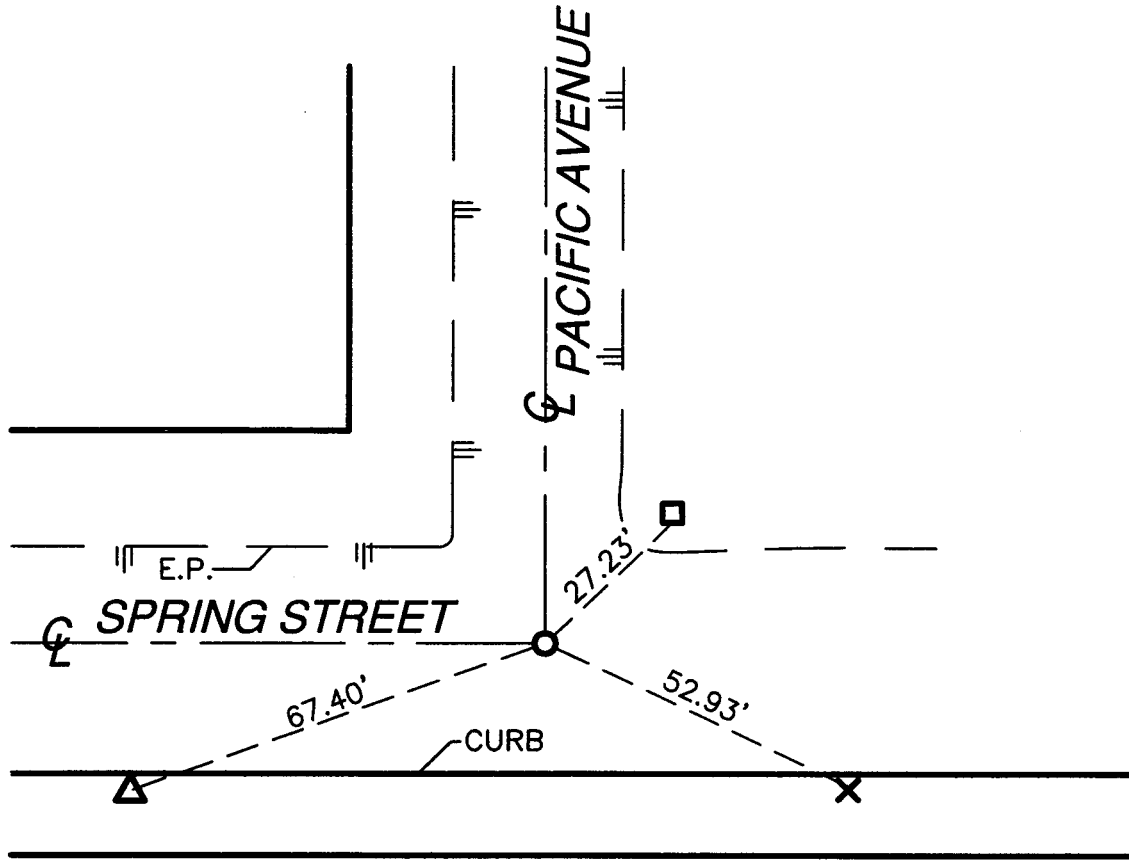
13038.TIF

Street: SPRING STREET

OFFICIAL USE ONLY

X-Street: PACIFIC AVENUE

LOCATED IN SECTION 7, T2S, R4W, SBM



- SET 1" I.P. WITH PLASTIC PLUG STAMPED
LS 5306, DN. 0.2'
- SET NL & TIN IN POWER POLE #1127115E
UP 1.0' S'LY SIDE
- △ SET FILED "X" ON TOP OF FIRE HYDRANT
- × FOUND GIN SPIKE UP 0.5' S'LY SIDE OF
POWER POLE #1646618E



Scale: 1" = 30'

Date: ARRIL 2007

Drawn by: AR

W.O.: 24165

F.B.:

OFFICIAL TIE PLAT
CITY OF RIVERSIDE

These ties are for purpose of perpetuating the found monumentation. No claim is made as to the relationship of the points of lines shown hereon to true boundary locations.

PM 31869
PM 220/1-4

Sheet 3 of 3

FILE NO.: