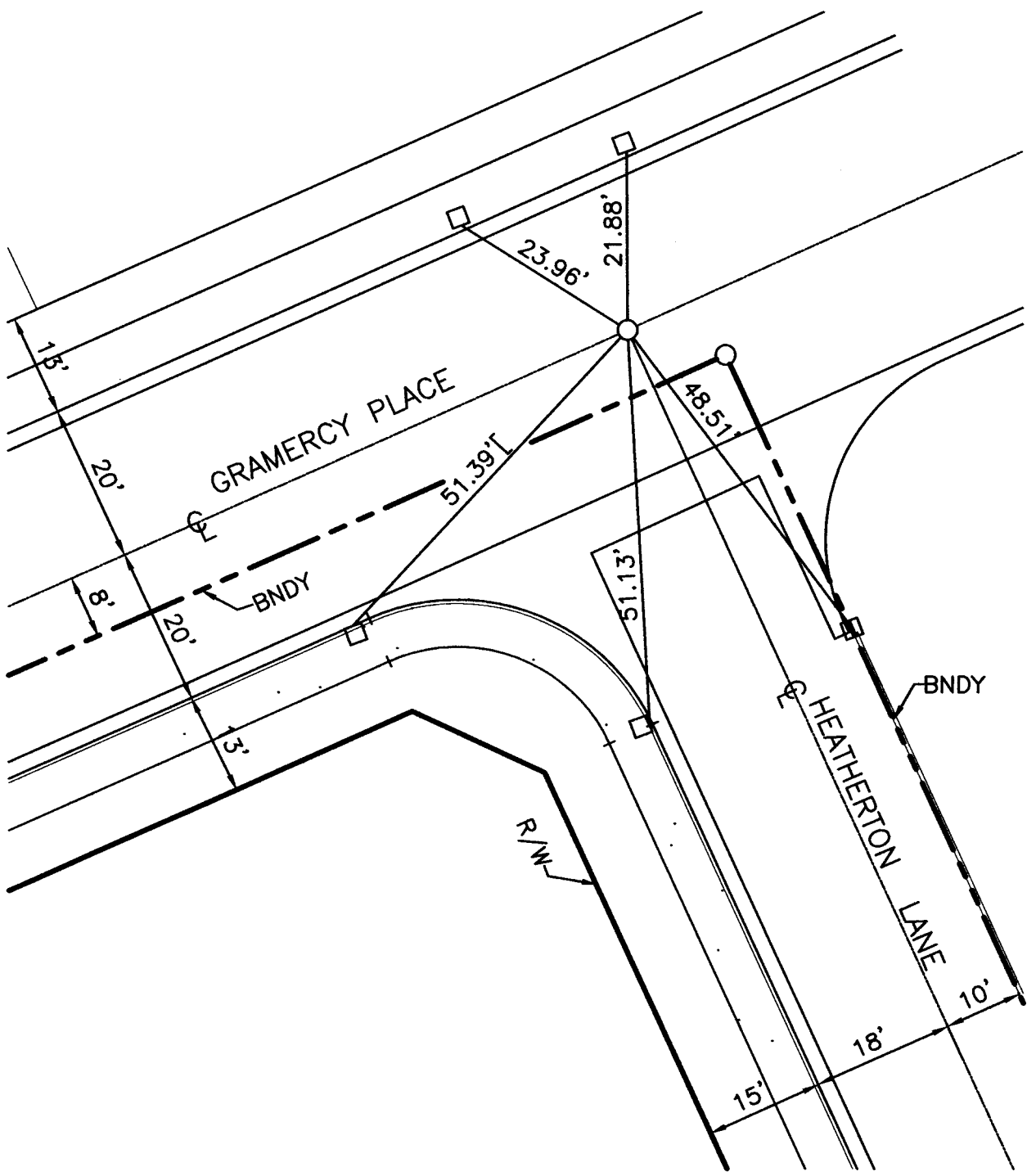


Street: GRAMERCY PLACE

X-Street: OFFICIAL USE ONLY

HEATHERTON LANE



- SET 1" I.P., FLUSH, TAGGED LS 5306
- SET NAIL AND TAG ON CURB



Scale: 1" = 20'  
 Date: MARCH 2007  
 Drawn by: AR  
 W.O.: 99121

**OFFICIAL TIE PLAT**  
**CITY OF RIVERSIDE**

**TRACT MAP 27322**  
**MB 382/7-9**

*These ties are for purpose of perpetuating the found monumentation. No claim is made as to the relationship of*