

1310.TIF

Street: CHARLOTTE WAY

OFFICIAL USE ONLY

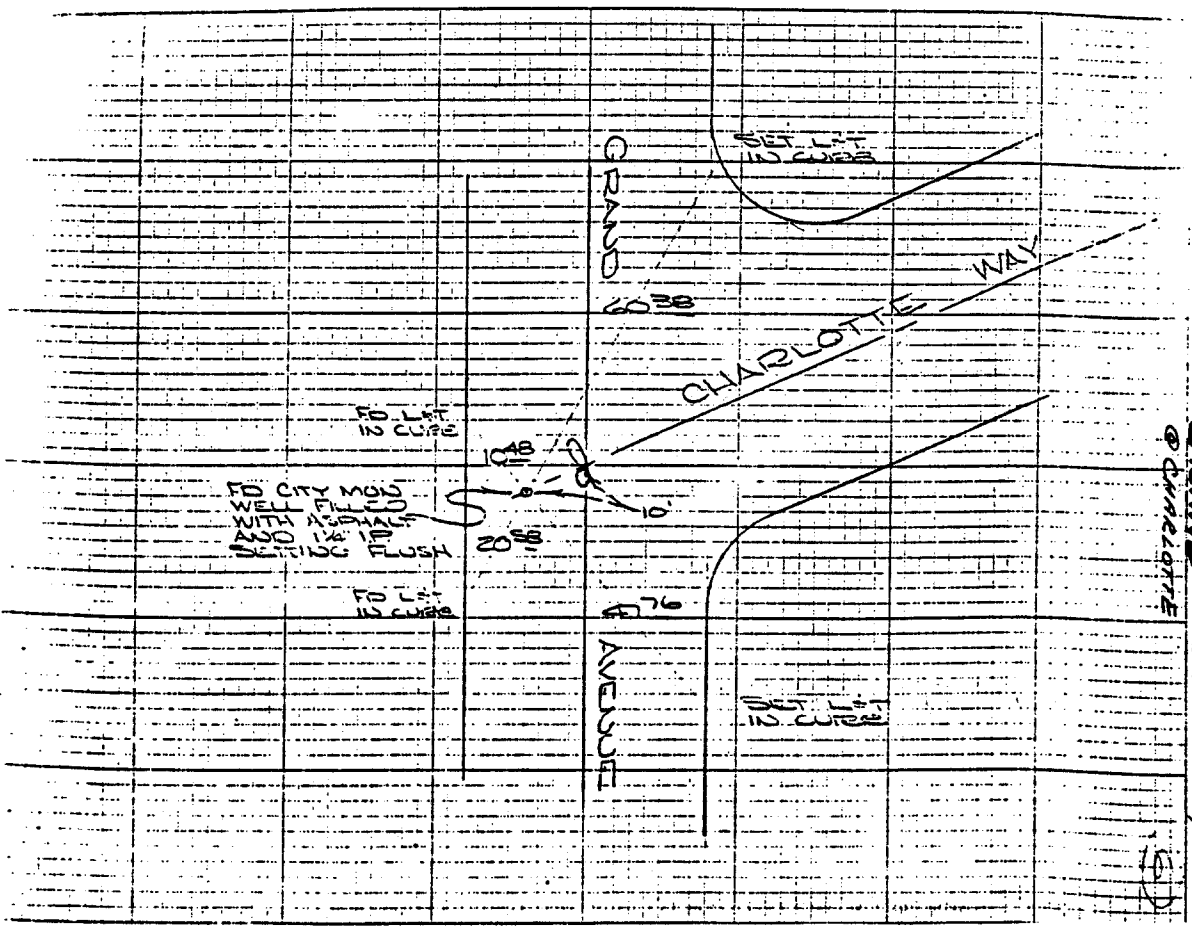
X-Street: GRAND AVE

GRAND AVENUE
AT CHARLOTTE WAY

HISTORICAL
DATA
FB 553/62

TRANSIT TIES

CREW:
STEELE
FREY
NEW
SEPT 23, 71
FB 521/68



- ✕ FD. Ramset Nail on T/C
- FD. "C" Nail on T/C

- FD. LD. & TK. on T/C
- Set LD. & TK. on T/C

Scale:
Date:
Drawn by:
W.O.:
F.B.:

OFFICIAL TIE PLAT

CITY OF RIVERSIDE

These ties are for the purpose of perpetuating the found monumentation. No claim is made as to the relationship of the points or lines shown hereon to true boundary locations.

Sheet 1 of 1
File No.: