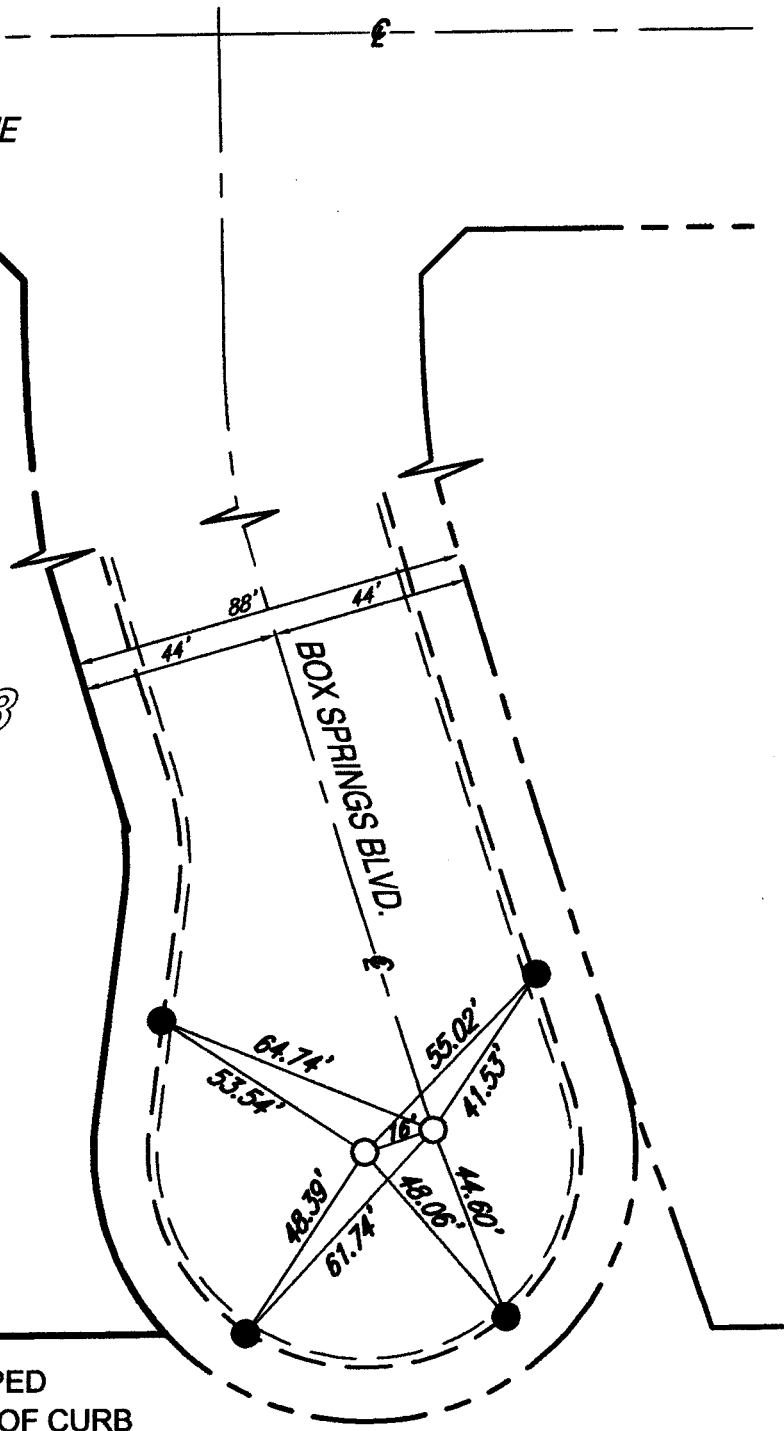
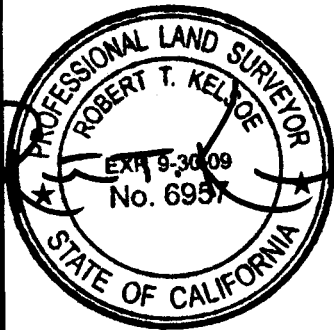


PUBLIC WORKS DEPARTMENT
CITY OF RIVERSIDE, CALIFORNIA
OFFICIAL TIE PLAT

13140.TIP

EASTRIDGE AVENUE

PM 33808
P.M.B. 216/87-88



- SET NAIL & TAG STAMPED
L.S. 6957. SET ON TOP OF CURB
- FD. 1" I.P. STAMPED L.S. 6957

STREET BOX SPRINGS BLVD. X-STREET EASTRIDGE AVE. OFFICE USE ONLY

SCALE: 1" = 40'
 DATE: 1-16-08
 DR. BY: KORCOK
 W.O.:
 F.O.:

OFFICIAL TIE PLAT
 CITY OF RIVERSIDE

These ties are for the purpose of perpetuating the found monumentation. No claim is made as to the relationship of the points or lines shown hereon to true boundary locations.

SHEET
 1
 OF 1 SHEETS
 FILE NO.: