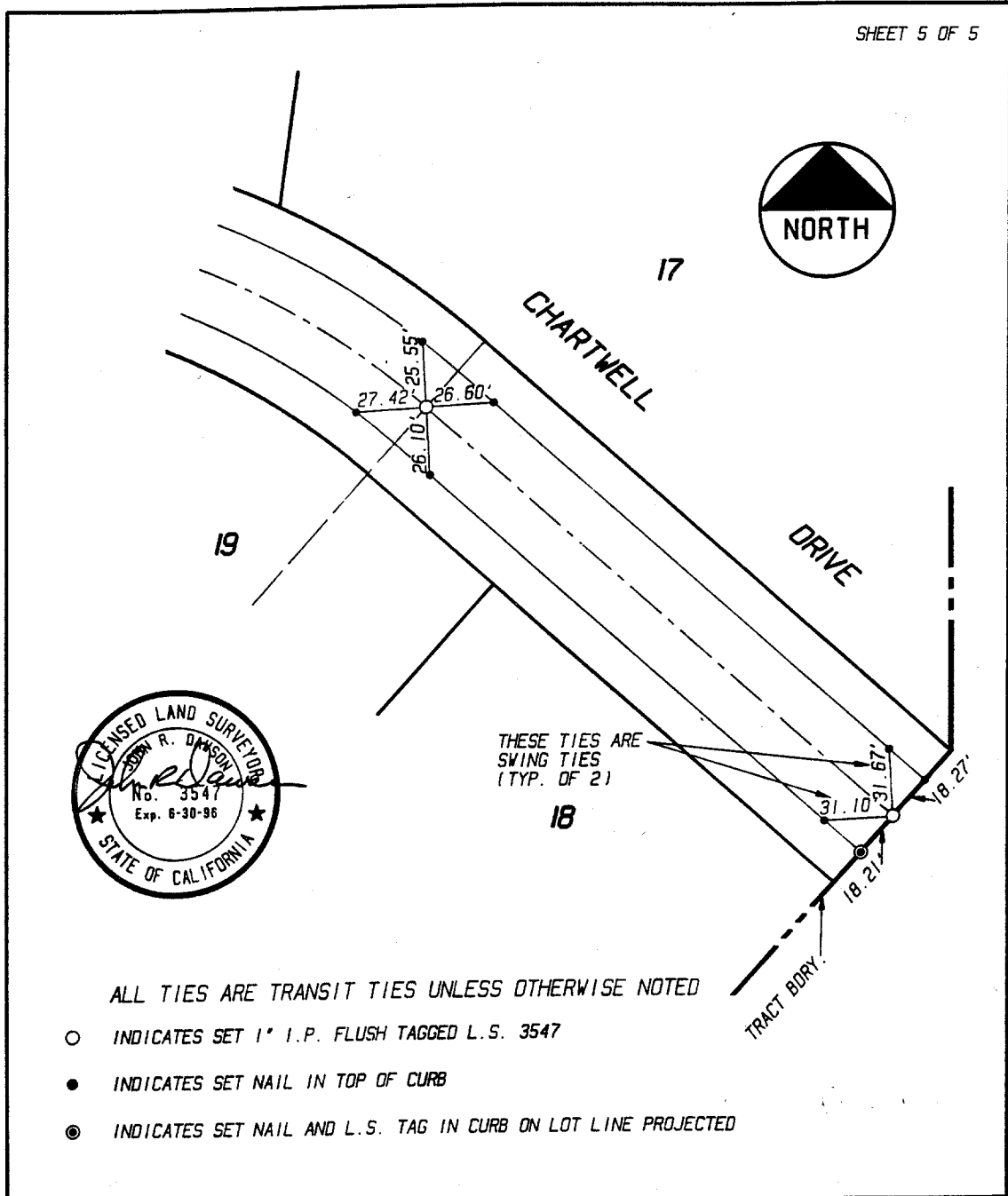


1315-TIF

Street: CHARTWELL DR. X-Street: SEY WYNDHAM HILL

OFFICIAL USE ONLY



ALL TIES ARE TRANSIT TIES UNLESS OTHERWISE NOTED

- INDICATES SET 1" I.P. FLUSH TAGGED L.S. 3547
- INDICATES SET NAIL IN TOP OF CURB
- ⊗ INDICATES SET NAIL AND L.S. TAG IN CURB ON LOT LINE PROJECTED

PLAT PREPARED BY:  
**INTEGRA ENGINEERING, INC.**  
 LAND SURVEYORS \* CIVIL ENGINEERS  
 621 E. CARNEGIE DRIVE, #120, SAN BERNARDINO, CA. 92408  
 TELEPHONE (714) 383-0200 FAX (714) 383-0203

**CITY OF RIVERSIDE**  
 MONUMENTATION TIE SHEET  
**TRACT No. 22218**  
 RECORDED IN M.B.

SEY WYNDHAM HILL  
CHARTWELL DR

- ⊗ FD. Ramset Nail on T/C
- FD. LD. & TK. on T/C
- FD. "C" Nail on T/C
- Set LD. & TK. on T/C

Scale:  
 Date:  
 Drawn by:  
 W.O.:  
 F.B.:

**OFFICIAL TIE PLAT**  
**CITY OF RIVERSIDE**

*These ties are for the purpose of perpetuating the found monumentation. No claim is made as to the relationship of the points or lines shown hereon to true boundary locations.*

Sheet 1 of 1  
 File No.: