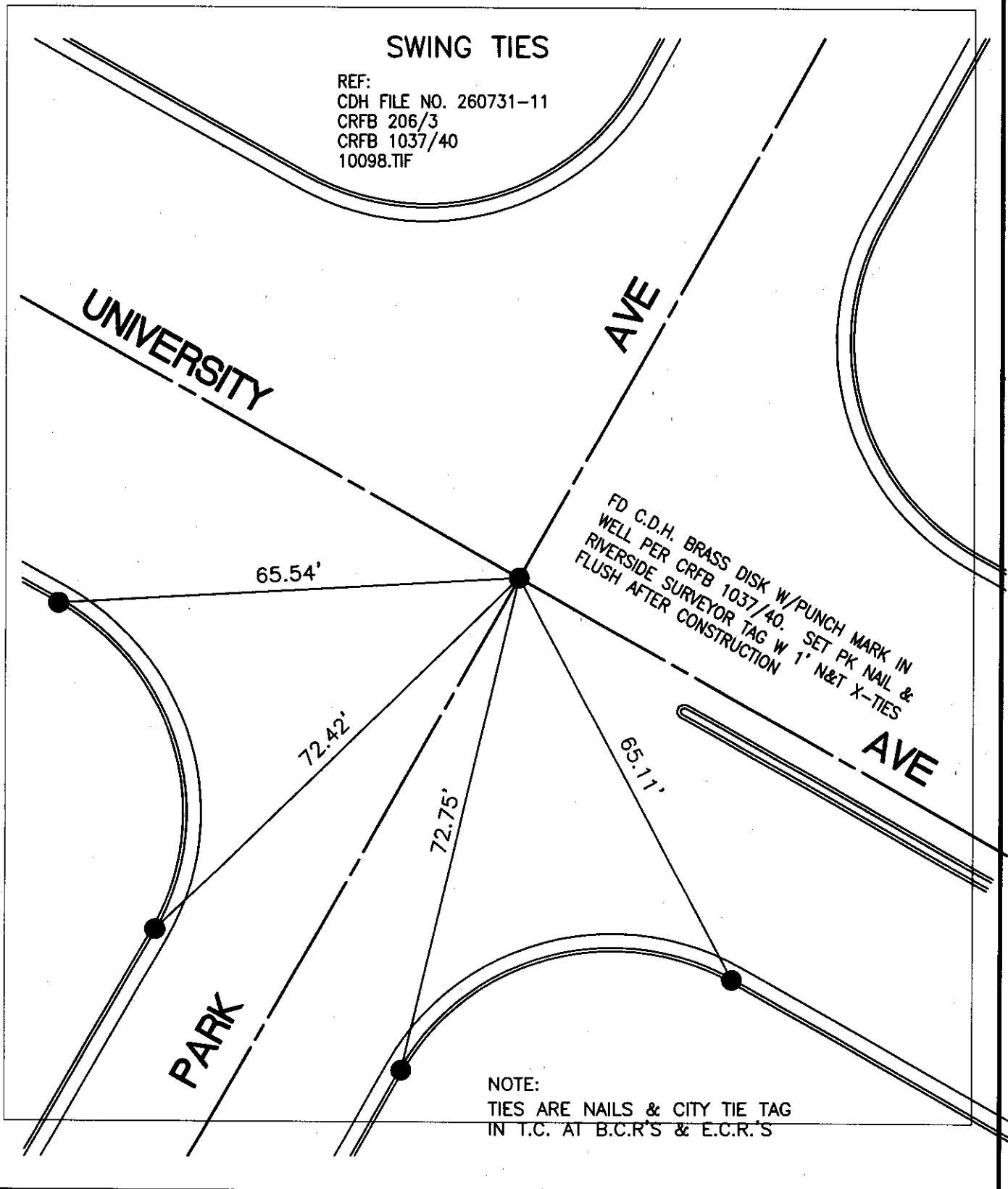


Street: UNIVERSITY AVENUE

X-Street: PARK AVENUE

SWING TIES

REF:
CDH FILE NO. 260731-11
CRFB 206/3
CRFB 1037/40
10098.TIF



FD C.D.H. BRASS DISK W/PUNCH MARK IN WELL PER CRFB 1037/40. SET PK NAIL & RIVERSIDE SURVEYOR TAG W 1" N&T X-TIES FLUSH AFTER CONSTRUCTION

NOTE:
TIES ARE NAILS & CITY TIE TAG IN T.C. AT B.C.R.'S & E.C.R.'S

Scale: 1" = 20'

Date: 04/27/05

Drawn by: scurtis

F.B.:

TR-Sec: T2SR5W-25

OFFICIAL TIE PLAT
CITY OF RIVERSIDE

These ties are for the purpose of perpetuating the found monumentation. No claim is made as to the relationship of the points or lines shown hereon to true boundary locations.

Sheet 1 of 1

Cadme MB: 40-2