

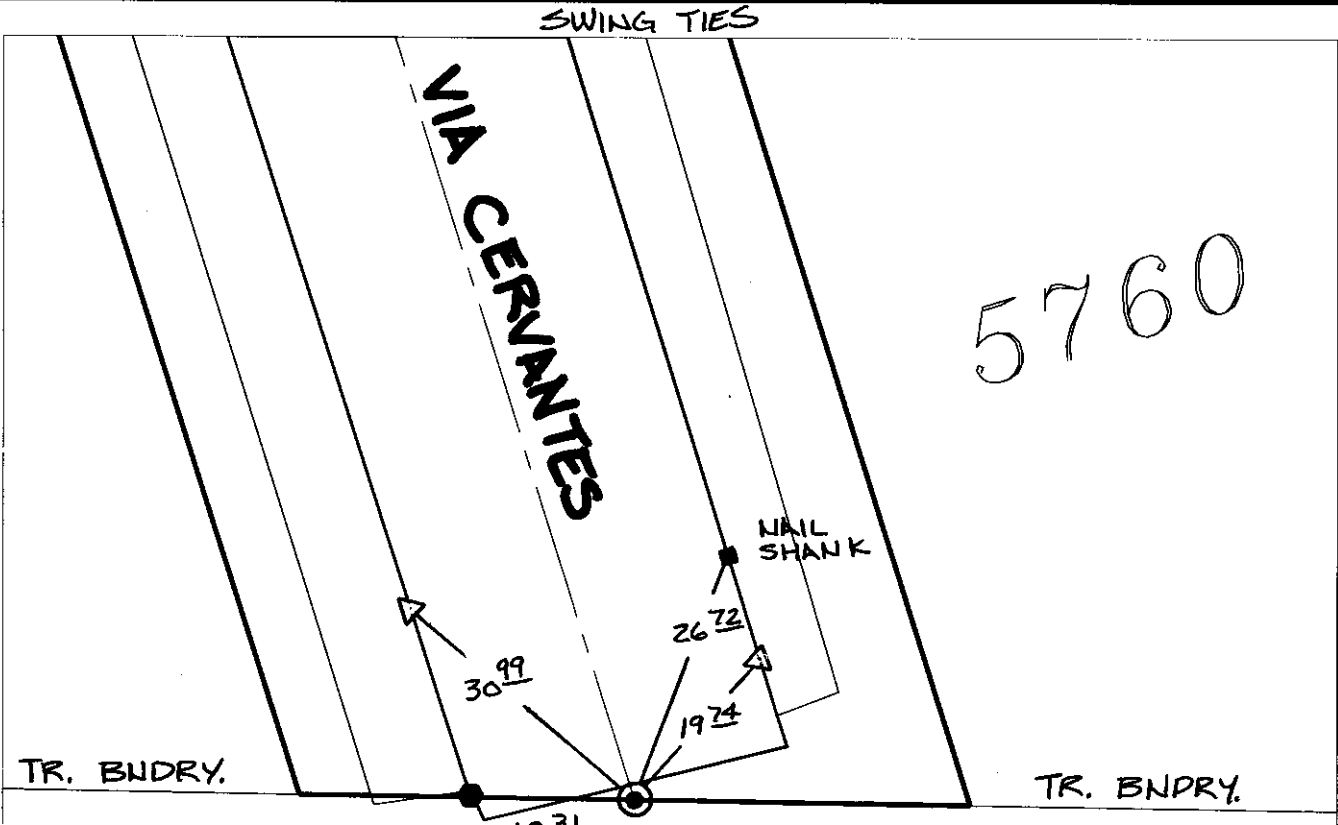
13158.TIF

Street:

VIA CERVANTES

X-Street:  
OFFICIAL USE ONLY

TR BNDRY.



FD. 3/4" I.P. W/  
RCE 862 TAG PER.  
TIE SHT. FOR. TR 3820  
MB 63/36-37 FLUSH

● FD RAMSET NAIL & RCE 862 TAG ON T/C  
 △ SET "C" NAIL & CITY TIE TAG ON T/C

× FD. Ramset Nail on T/C    ● FD. LD. & TK. on T/C  
 ■ FD. "C" Nail on T/C    ○ Set LD. & TK. on T/C

P.K. and City Engineer tag to be set @  
 surface after street construction is  
 complete. (if possible)

Scale: 1" = 20'  
 Date: 09/18/07  
 Drawn by: pw  
 F.B.:  
 TR-Sec: T2SR4W-32

## OFFICIAL TIE PLAT

### CITY OF RIVERSIDE

*These ties are for the purpose of perpetuating the found monumentation. No claim is made as to the relationship of the points or lines shown hereon to true boundary locations.*



Sheet 1 of 1  
 Cadme MB: 57-5