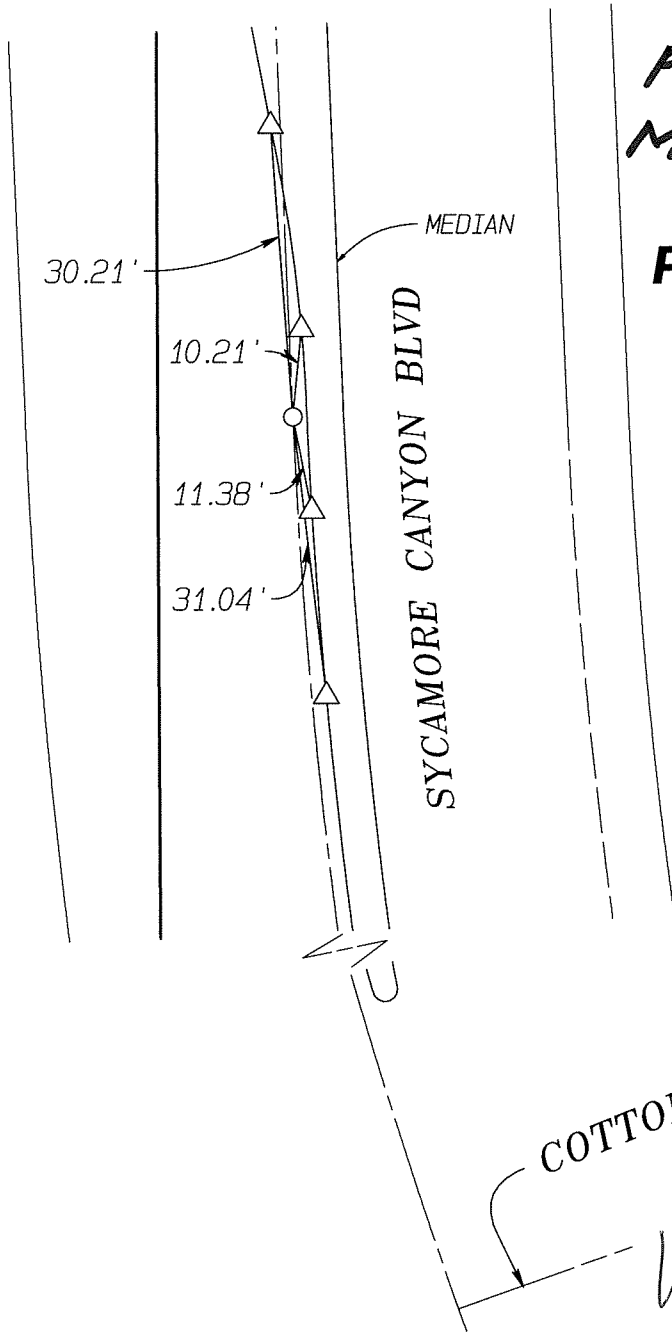


**PARCEL**  
**MAP 34026**  
P.M. 223/78-82  
**PARCEL 5**



COTTONWOOD AVE



- INDICATES SET 1" I.P.  
STAMPED LS 5529, FLUSH
- △ INDICATES SET RAMSET NAIL  
IN TOP OF CURB

ALBERT A. CIVIL ENGINEERS  
**WEBB**  
 ASSOCIATES  
 3788 MCCRAY ST.  
 RIVERSIDE CA. 92506  
 (951) 686-1070

SCALE:	NTS
DATE:	11-12-2008
CHK. BY:	<i>ml</i>
DR. BY:	<i>JCR</i>
W.D.:	05-033A
F.B.:	2002

**OFFICIAL TIE PLAT**  
**CITY OF RIVERSIDE**

**PARCEL MAP NO. 34026**

SHEET	2
OF 4 SHEETS	
FILE NO.:	PM_TIES.pro