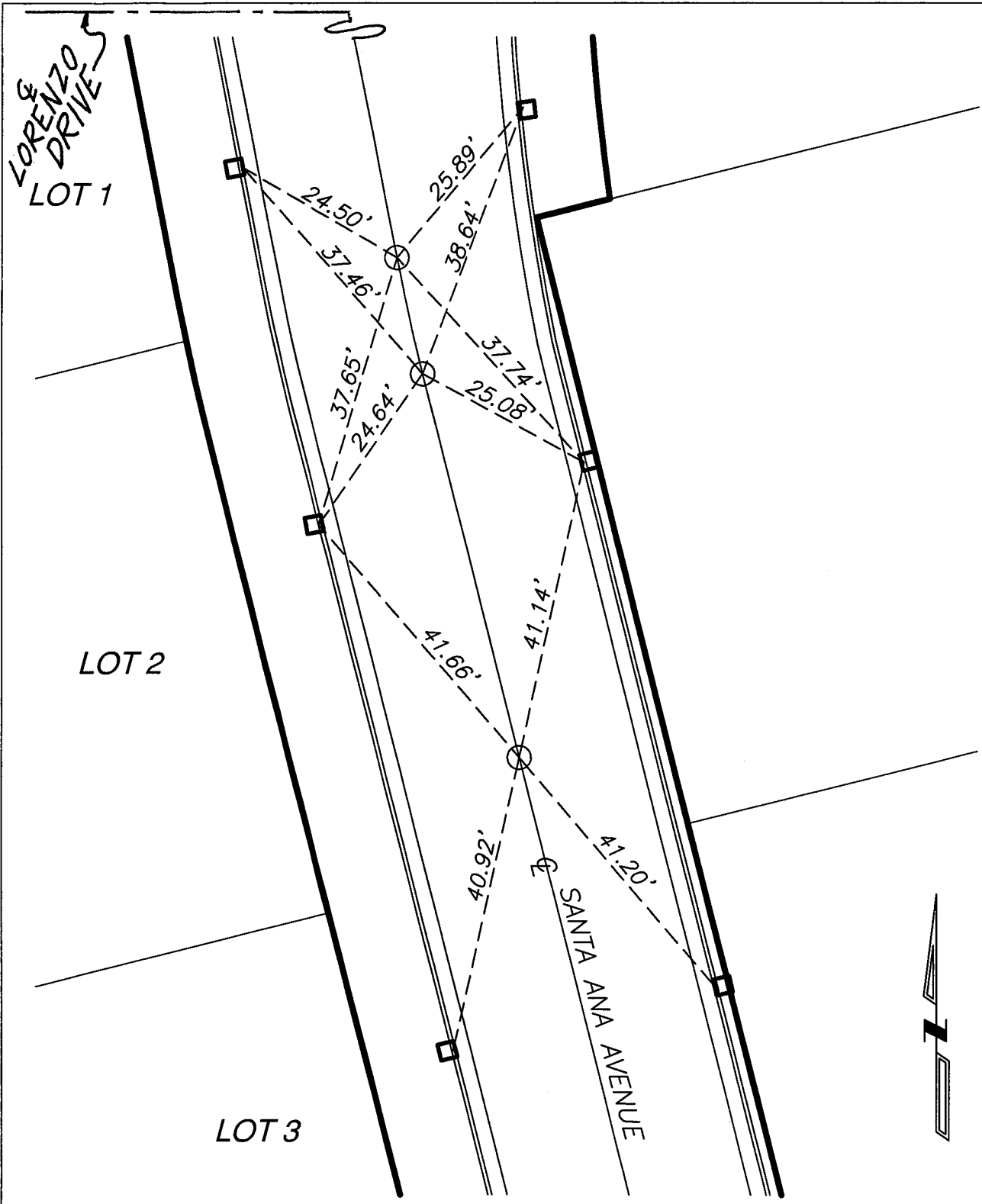


Street: SNATA ANA AVENUE

X-Street: _____
OFFICIAL USE ONLY



- SET LEAD AND TACK IN TOP OF CURB
- 1" I.P., FLUSH TAGGED LS 5306



Scale: 1" = 20'
 Date: FEBRUARY 2009
 Drawn by: AR
 W.O.: 99122
 F.B.:

OFFICIAL TIE PLAT

CITY OF RIVERSIDE

These ties are for purpose of perpetuating the found monumentation. No claim is made as to the relationship of the points of lines shown hereon to true boundary locations.

TR 26958
 M.B. 286/6-8
 Sheet 4 of 5
 FILE NO.: