

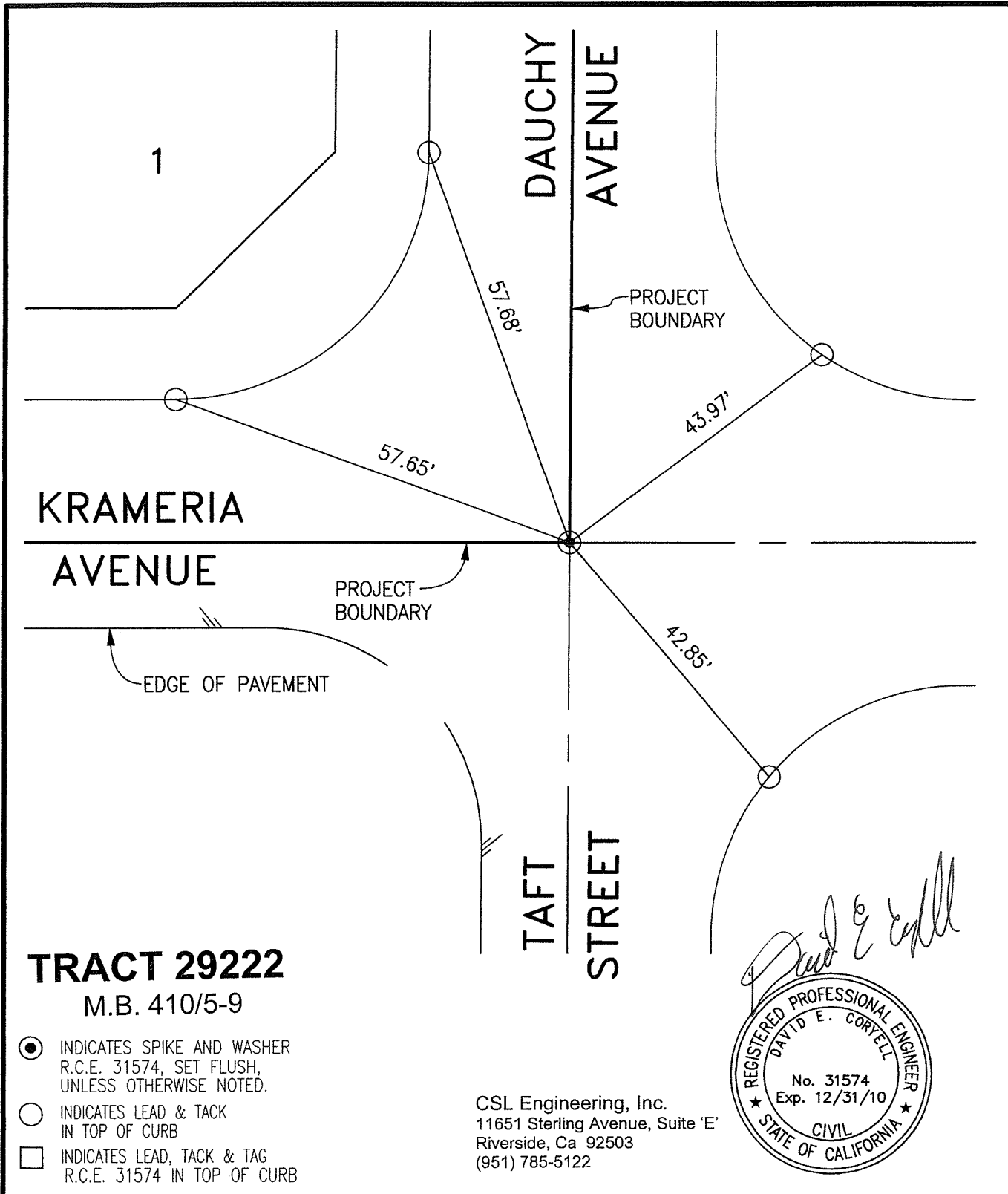
13248.71F

STREET: KRAMERIA AVENUE

OFFICIAL USE ONLY

X-STREET: TAFT STREET

DAUCHY AVENUE



SCALE: 1"=20'
DATE: 04-09-09
DRAWN BY: SLL
F.B.:
SEC: 30 T.3S.,R.4W

OFFICIAL TIE PLAT
CITY OF RIVERSIDE

THESE TIES ARE FOR THE PURPOSE OF PERPETUATING THE FOUND MONUMENTATION. NO CLAIM IS MADE AS THE RELATIONSHIP OF THE POINTS OR LINES SHOWN HEREON TO TRUE BOUNDARY LOCATIONS

SHEET 1 OF 1