

13256.TIF

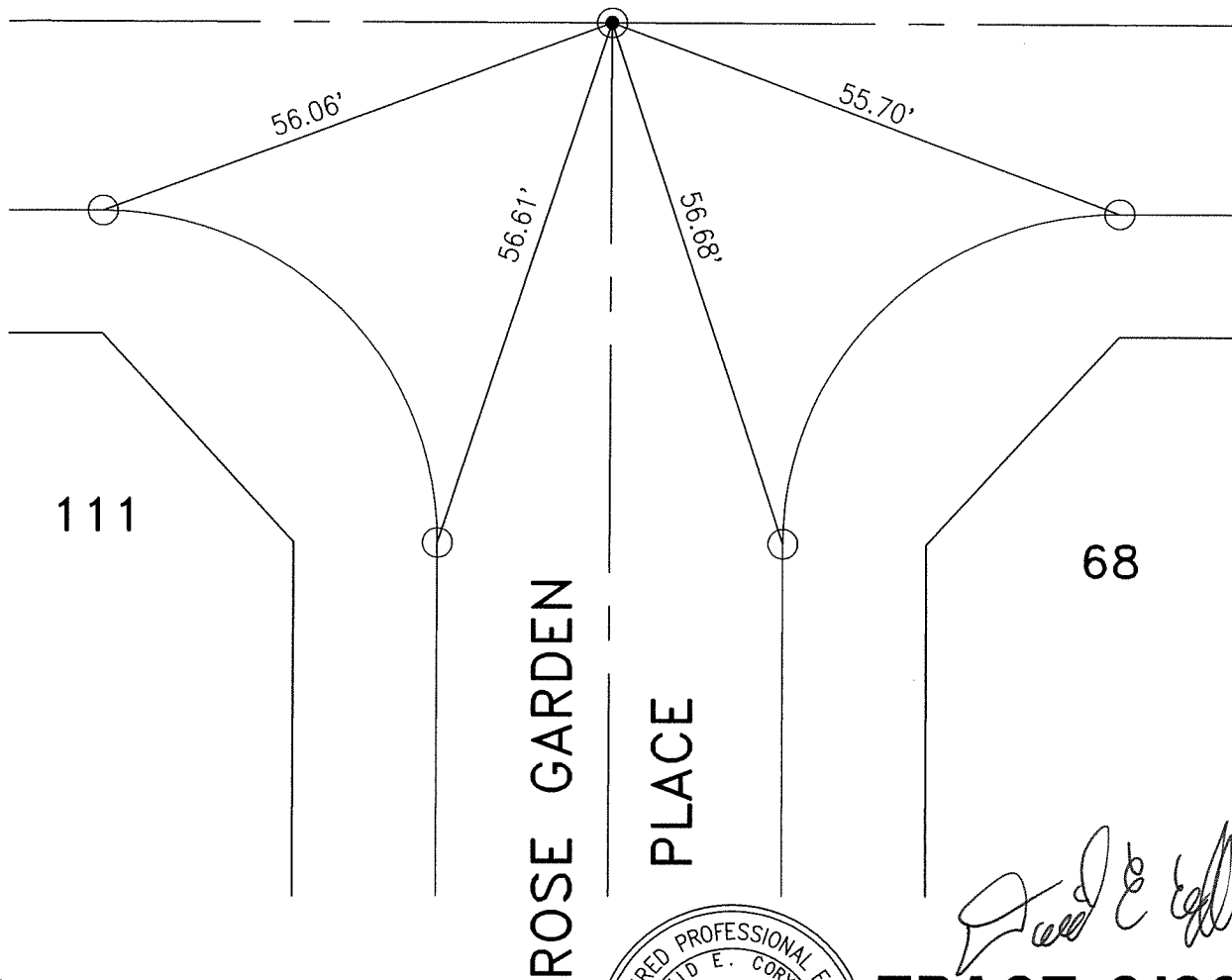
STREET: ROSE GARDEN PLACE

OFFICIAL USE ONLY

X-STREET:

KRAMERIA AVENUE

KRAMERIA AVENUE



- INDICATES SPIKE AND WASHER RCE 31574, SET FLUSH, UNLESS OTHERWISE NOTED.
- INDICATES LEAD & TACK IN TOP OF CURB
- INDICATES LEAD, TACK & TAG R.C.E. 31574 IN TOP OF CURB



TRACT 31360
M.B. 392/43-47

CSL Engineering, Inc.
 11651 Sterling Avenue, Suite E
 Riverside, CA 92503
 (951) 785-5122

SCALE: 1"=20'

DATE: 04-09-09

DRAWN BY: SLL

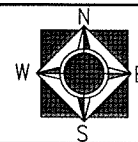
F.B.:

SEC: 30 T.3S.,R.4W

OFFICIAL TIE PLAT

CITY OF RIVERSIDE

THESE TIES ARE FOR THE PURPOSE OF PERPETUATING THE FOUND MONUMENTATION. NO CLAIM IS MADE AS THE RELATIONSHIP OF THE POINTS OR LINES SHOWN HEREON TO TRUE BOUNDARY LOCATIONS



SHEET 1 OF 1