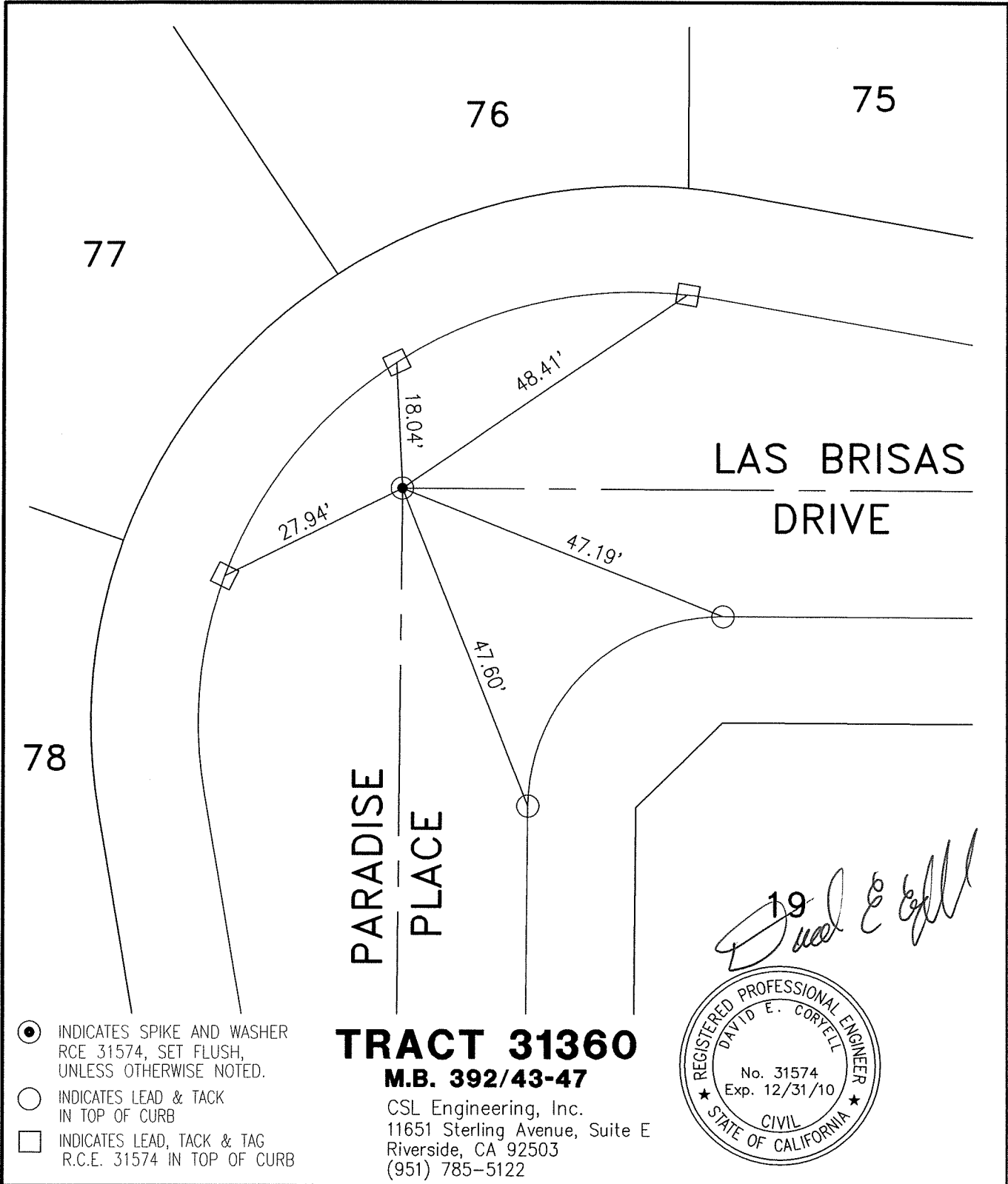


13259.71E

STREET: LAS BRISAS DRIVE

OFFICIAL USE ONLY

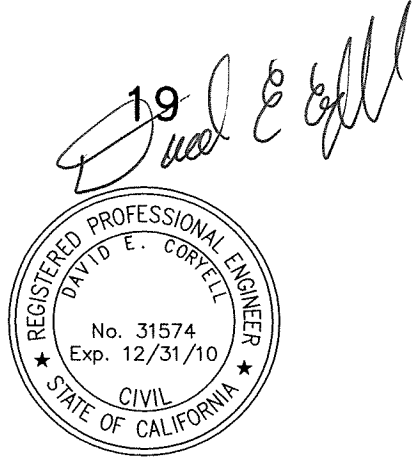
X-STREET: PARADISE PLACE



- INDICATES SPIKE AND WASHER RCE 31574, SET FLUSH, UNLESS OTHERWISE NOTED.
- INDICATES LEAD & TACK IN TOP OF CURB
- INDICATES LEAD, TACK & TAG R.C.E. 31574 IN TOP OF CURB

TRACT 31360
M.B. 392/43-47

CSL Engineering, Inc.
 11651 Sterling Avenue, Suite E
 Riverside, CA 92503
 (951) 785-5122



SCALE: 1"=20'
DATE: 04-09-09
DRAWN BY: SLL
F.B.:
SEC: 30 T.3S.,R.4W

OFFICIAL TIE PLAT
CITY OF RIVERSIDE

THESE TIES ARE FOR THE PURPOSE OF PERPETUATING THE FOUND MONUMENTATION. NO CLAIM IS MADE AS THE RELATIONSHIP OF THE POINTS OR LINES SHOWN HEREON TO TRUE BOUNDARY LOCATIONS

SHEET 1 OF 1