

SWING TIES

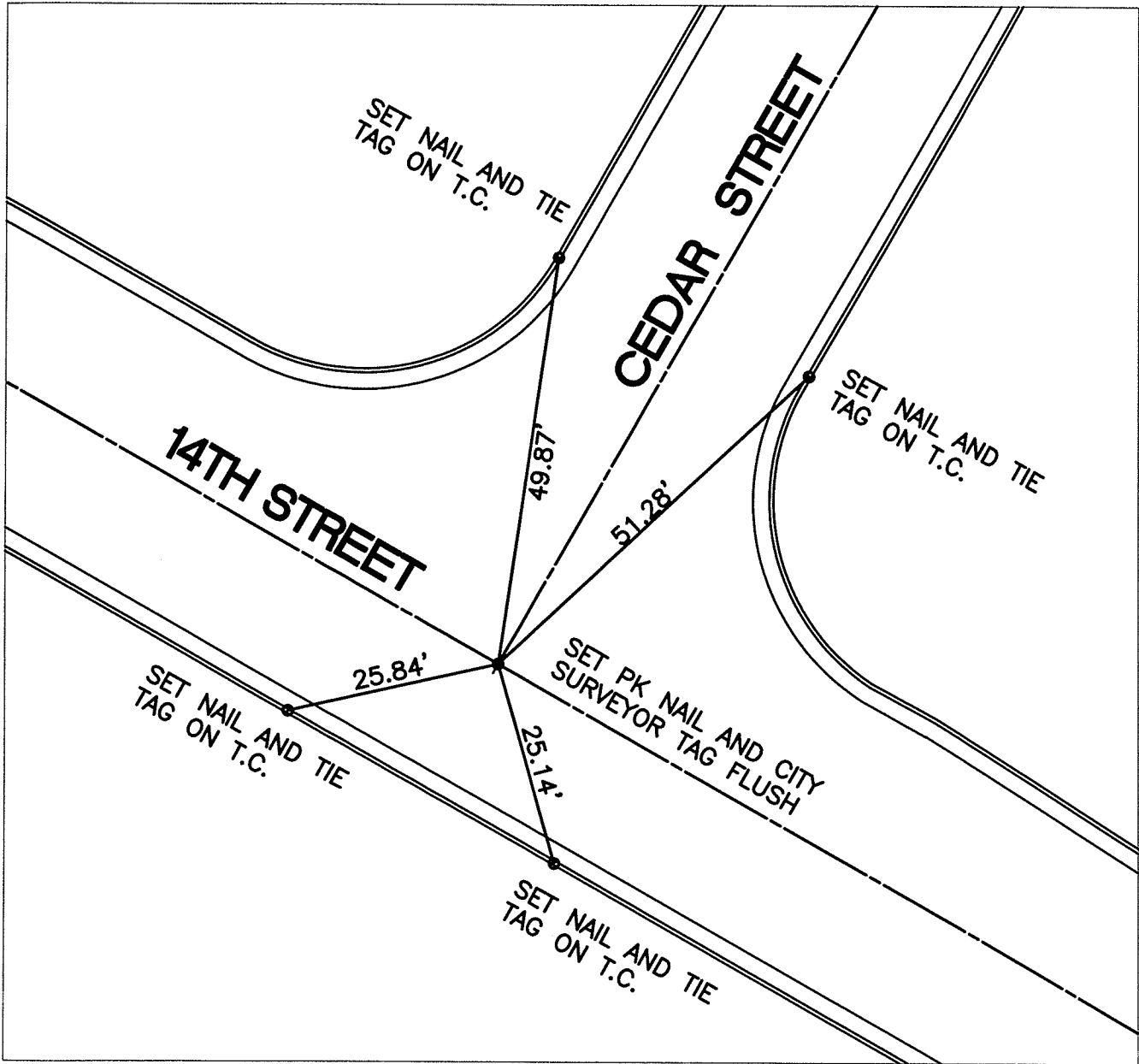
REF: CRFB 938/57

13267.TIF

STREET: 14TH STREET

OFFICIAL USE ONLY

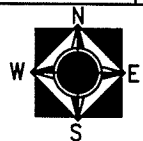
X-STREET: CEDAR STREET



SCALE: 1"=20'
 DATE: 8/06/07
 DRAWN BY: CURT
 F.B.:
 SEC: T. S.,R. W

OFFICIAL TIE PLAT CITY OF RIVERSIDE

THESE TIES ARE FOR THE PURPOSE OF PERPETUATING THE FOUND MONUMENTATION. NO CLAIM IS MADE AS THE RELATIONSHIP OF THE POINTS OR LINES SHOWN HEREON TO TRUE BOUNDARY LOCATIONS



SHEET 1 OF 1