

13279.77F

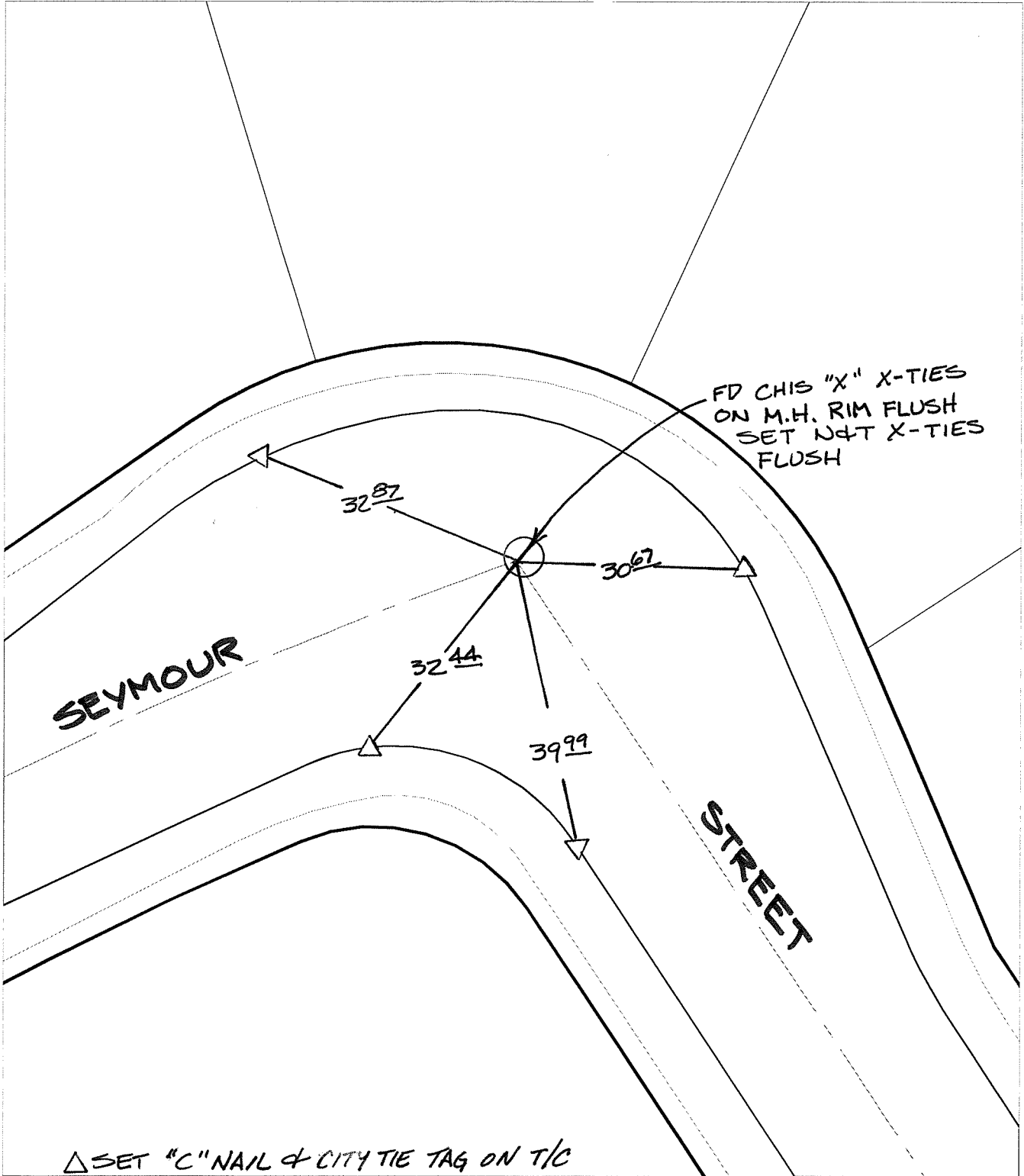
Street:

SEYMOUR STREET

X-Street:
OFFICIAL USE ONLY

KNUCKLE

SWING TIES



FD CHIS "X" X-TIES
ON M.H. RIM FLUSH
SET N&T X-TIES
FLUSH

SEYMOUR

X-Street

△ SET "C" NAIL & CITY TIE TAG ON T/C

- × FD. Ramset Nail on T/C ● FD. LD. & TK. on T/C
- FD. "C" Nail on T/C ○ Set LD. & TK. on T/C

P.K. and City Engineer tag to be set @
surface after street construction is
complete. (If possible)

Scale: 1" = 20'
 Date: 08/09/05
 Drawn by: SURVEY
 F.B.:
 TR-Sec: T3SR6W-14

OFFICIAL TIE PLAT

CITY OF RIVERSIDE

*These ties are for the purpose of perpetuating the found
 monumentation. No claim is made as to the relationship of
 the points or lines shown hereon to true boundary locations.*



Sheet 1 of 1
 Cadme MB: 79-2