

Street:

GARFIELD STREET

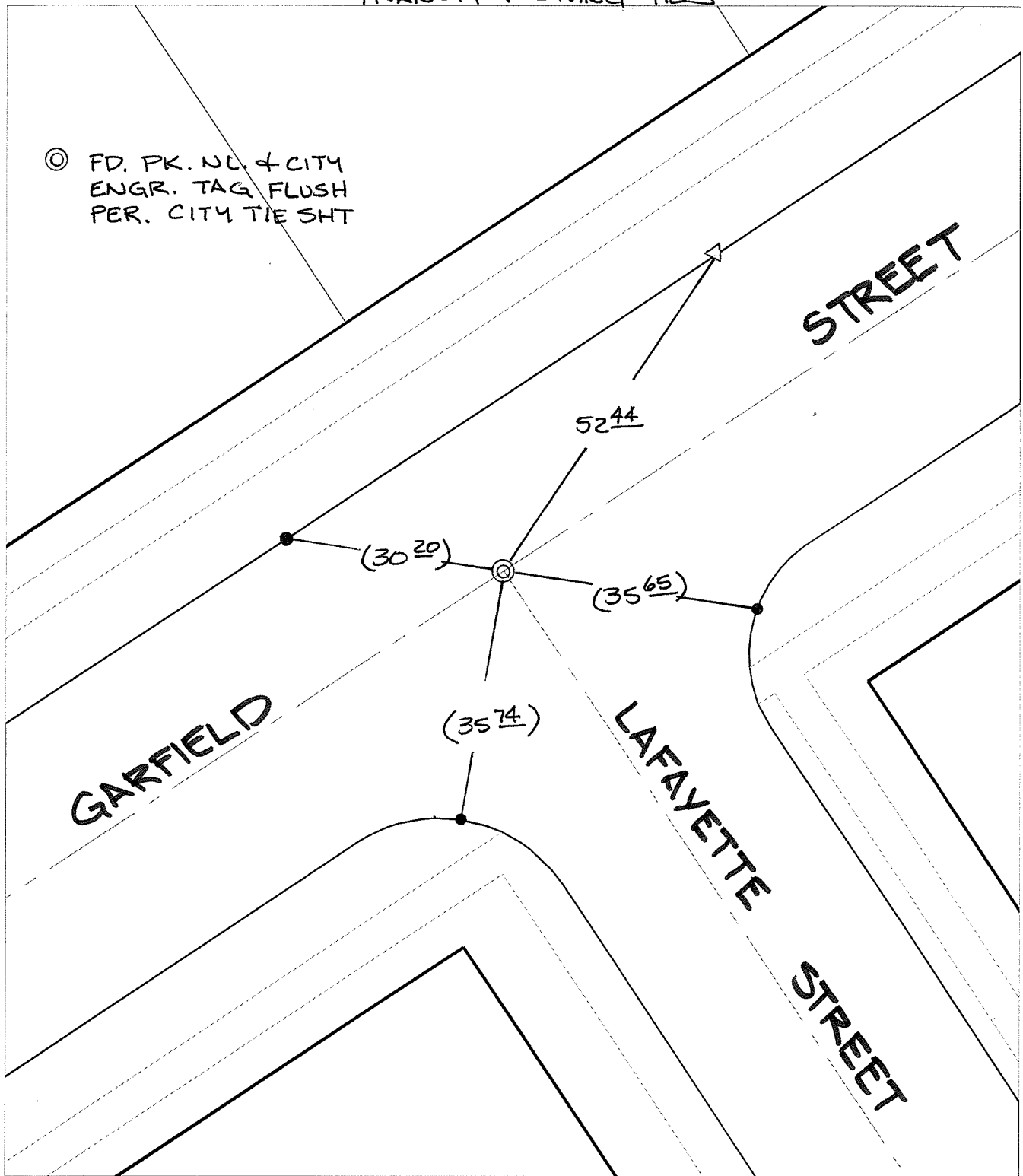
OFFICIAL USE ONLY

X-Street:

LAFAYETTE STREET

TRANSIT + SWING TIES

© FD. PK. NL. & CITY ENGR. TAG FLUSH PER. CITY TIE SHT



- ✕ FD. Ramset Nail on T/C    ● FD. LD. & TK. on T/C
- FD. "C" Nail on T/C    ○ Set LD. & TK. on T/C

P.K. and City Engineer tag to be set @ surface after street construction is complete. (If possible)

Scale: 1" = 20'  
 Date: 08/09/05  
 Drawn by: SURVEY  
 F.B.:  
 TR-Sec: T3SR5W-7

## OFFICIAL TIE PLAT

### CITY OF RIVERSIDE

*These ties are for the purpose of perpetuating the found monumentation. No claim is made as to the relationship of the points or lines shown hereon to true boundary locations.*



Sheet 1 of 1  
 Cadme MB: 66-3