

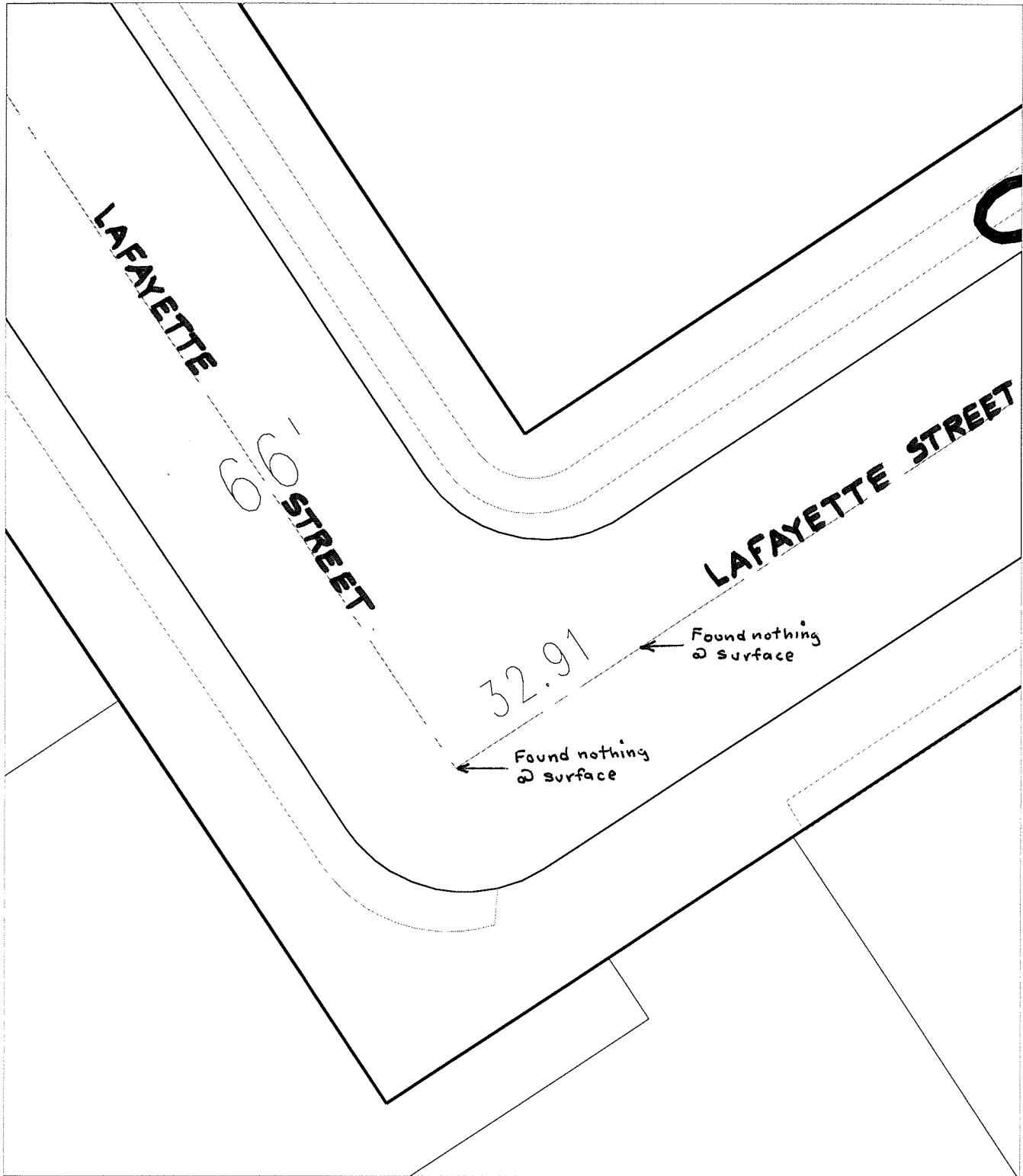
13288.T/JF

Street:

LAFAYETTE STREET

X-Street:  
OFFICIAL USE ONLY

GNUCKLE



- ✕ FD. Ramset Nail on T/C
- FD. "C" Nail on T/C

- FD. LD. & TK. on T/C
- Set LD. & TK. on T/C

*P.K. and City Engineer tag to be set @ surface after street construction is complete. (If possible)*

Scale: 1" = 20'

Date: 08/09/05

Drawn by: SURVEY

F.B.:

TR-Sec: T3SR5W-7

## OFFICIAL TIE PLAT

### CITY OF RIVERSIDE

*These ties are for the purpose of perpetuating the found monumentation. No claim is made as to the relationship of the points or lines shown hereon to true boundary locations.*



Sheet 1 of 1

Cadme MB: 66-3