

13289 T/F

Street:

PARKER WAY

OFFICIAL USE ONLY

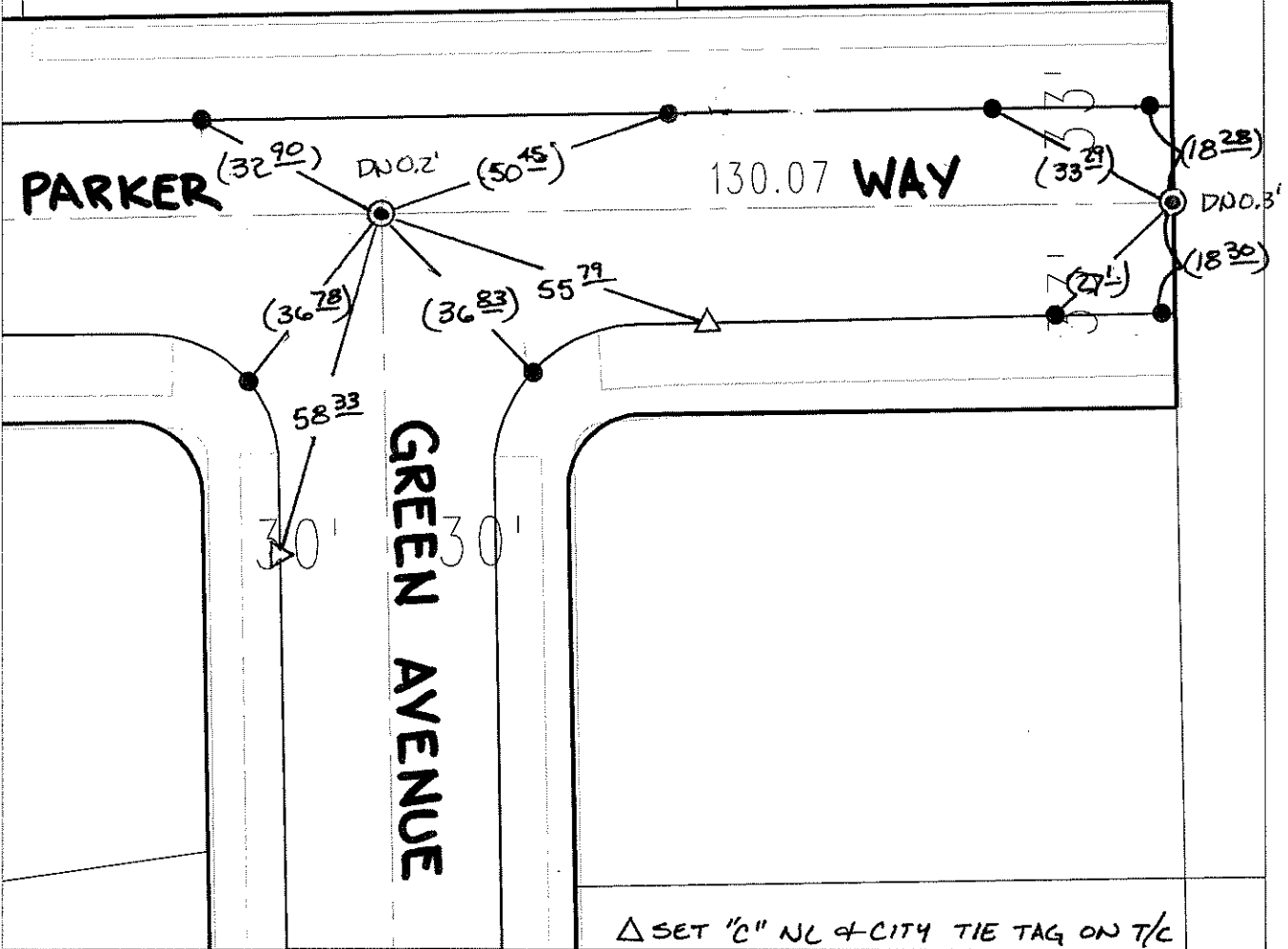
X-Street:

GREEN AVENUE

SWING TIES

© FD 1" I.P. W/LS 3712  
TAG FLUSH PER. TIE  
SHT FOR TR 5104-4  
MB 84/59-60

( ) REC DIST. PER.  
TIE SHT. FOR  
TR 5104-4 MB  
84/59-60



- ✕ FD. Ramset Nail on T/C
- FD. LD. & TK. on T/C
- FD. "C" Nail on T/C
- Set LD. & TK. on T/C
- P.K. and City Engineer tag to be set @ surface after street construction is complete. (If possible)

Scale: 1" = 30'  
 Date: 10/17/06  
 Drawn by: L. Harris  
 F.B.:  
 TR-Sec: T2SR6W-36

**OFFICIAL TIE PLAT**  
**CITY OF RIVERSIDE**

*These ties are for the purpose of perpetuating the found monumentation. No claim is made as to the relationship of the points or lines shown hereon to true boundary locations.*

Sheet 1 of 1  
 Cadme MB: 50-1