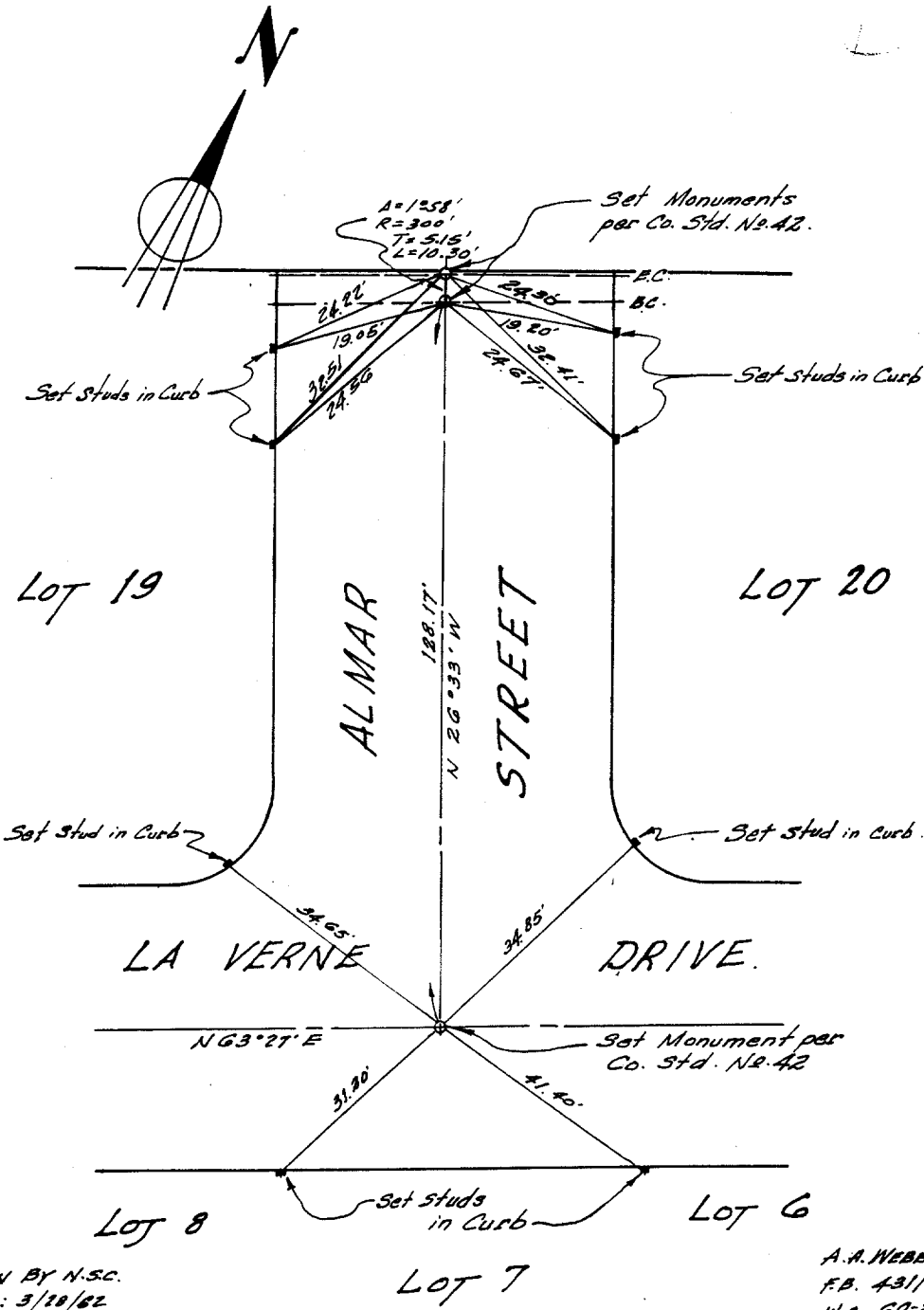


133.TIF

MYERSCOUGH UNIT NO. 2

IN SEC. 10, T. 3 S., R. G. W. RANCHO LA SIERRA



DRAWN BY N.S.C.
DATE: 3/29/82

A.A. WEBB
F.B. 431/73
W.O. 60-260

Street: ALMAR ST.

X-Street: LA VERNE DR.
OFFICIAL USE ONLY

✕ FD. Ramset Nail on T/C
■ FD. "C" Nail on T/C

● FD. LD. & TK. on T/C
○ Set LD. & TK. on T/C

Scale:
Date:
Drawn by:
W.O.:
F.B.:

OFFICIAL TIE PLAT CITY OF RIVERSIDE

These ties are for the purpose of perpetuating the found monumentation. No claim is made as to the relationship of the points or lines shown hereon to true boundary locations.

Sheet 1 of 1
File No.: