

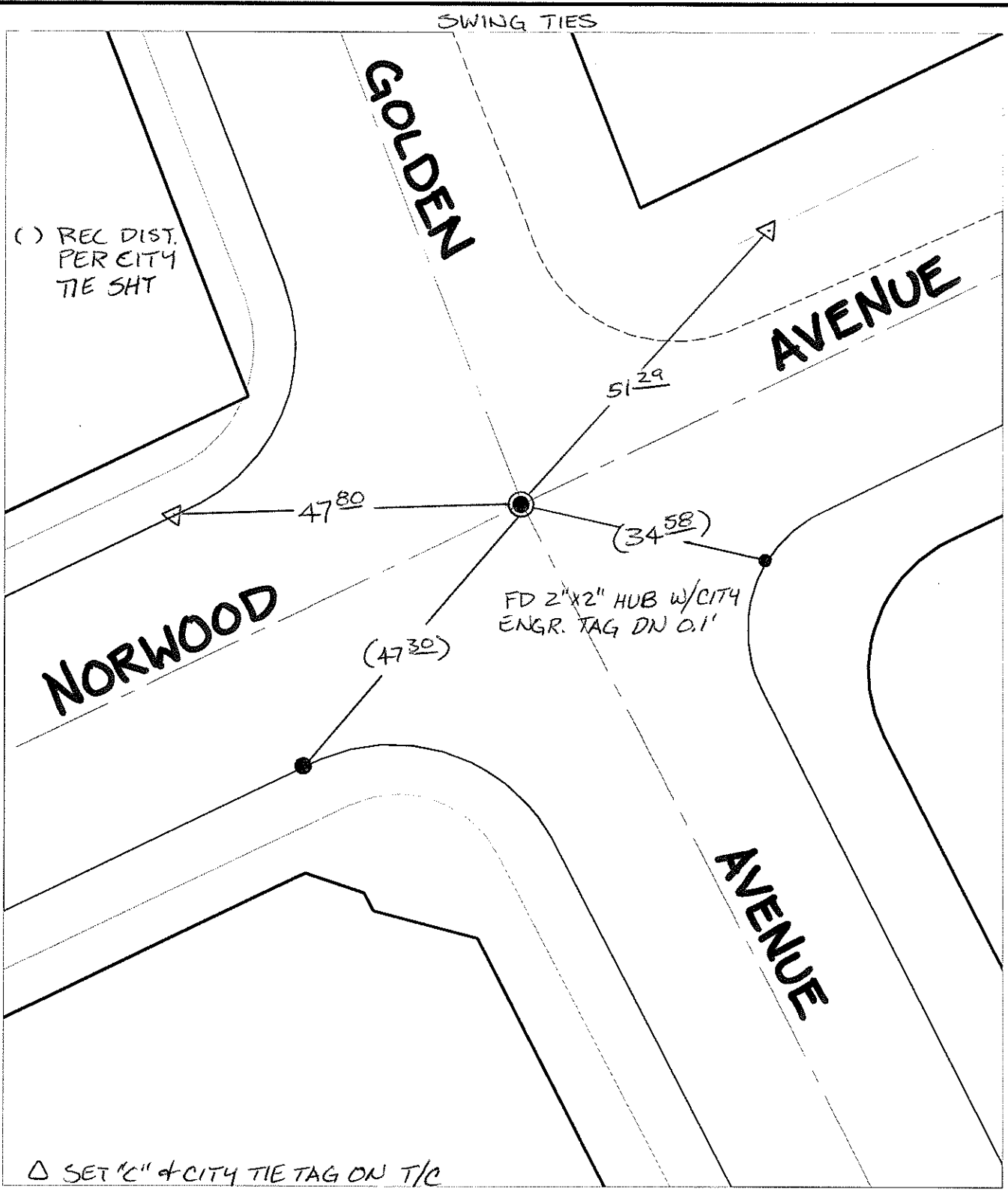
1330S.TIF

Street: NORWOOD AVENUE

X-Street: GOLDEN AVENUE

Street: GOLDEN AVENUE

OFFICIAL USE ONLY



() REC DIST. PER CITY TIE SHY

SWING TIES

GOLDEN AVENUE

NORWOOD AVENUE

NORWOOD AVENUE

GOLDEN AVENUE

FD 2"x2" HUB w/CITY ENGR. TAG DN 0.1'

51²⁹

47⁸⁰

(34⁵⁸)

(47³⁰)

△ SET "C" & CITY TIE TAG ON T/C

- ✕ FD. Ramset Nail on T/C
- FD. LD. & TK. on T/C
- FD. "C" Nail on T/C
- Set LD. & TK. on T/C
- P.K. and City Engineer tag to be set @ surface after street construction is complete. (If possible)

Scale: 1" = 20'

Date: 06/11/08

Drawn by: pw

F.B.:

TR-Sec: T3SR6W-10

OFFICIAL TIE PLAT

CITY OF RIVERSIDE

These ties are for the purpose of perpetuating the found monumentation. No claim is made as to the relationship of the points or lines shown hereon to true boundary locations.



Sheet 1 of 1
Cadme MB: 63-6