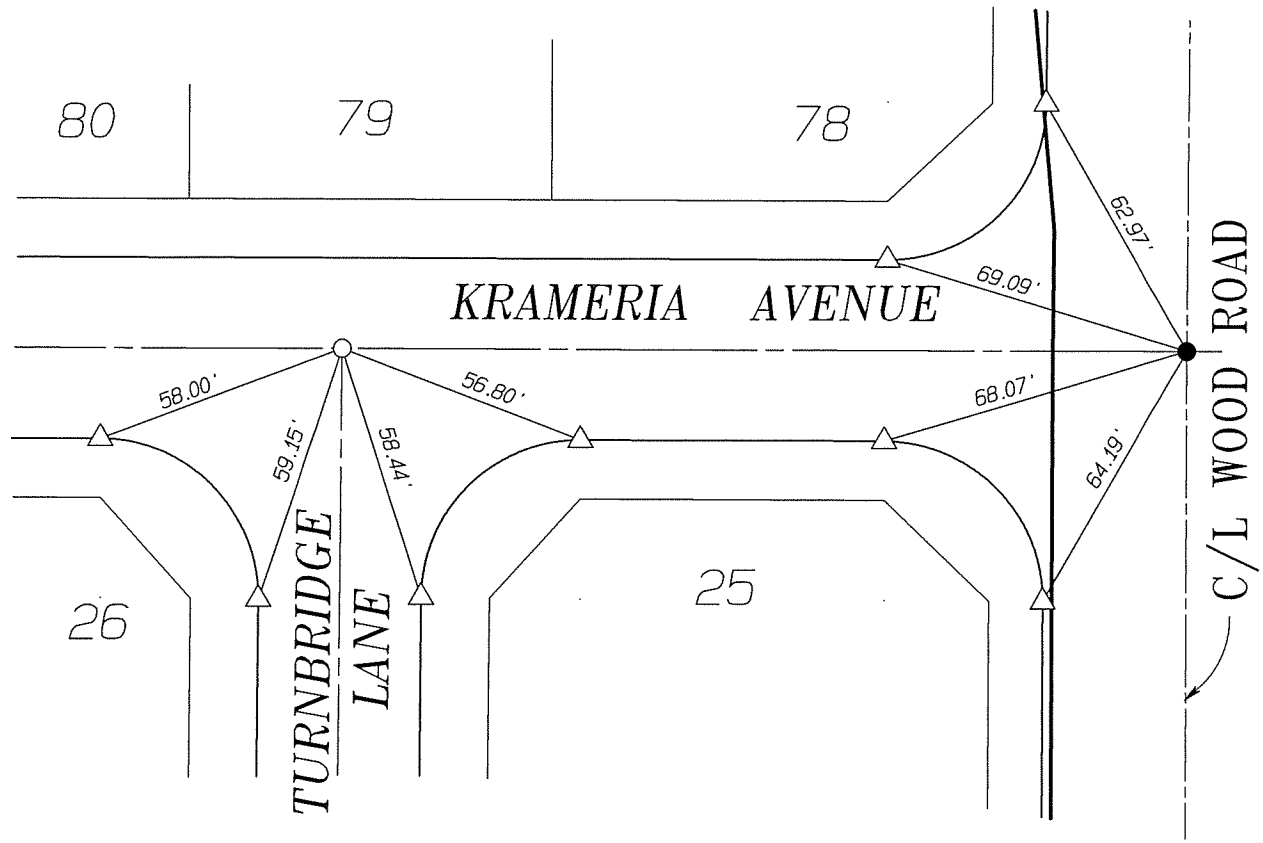
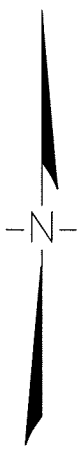


13352.TIF



● FD. 1 1/4 I.P. W/ N & TAG "LS 4055" DN 0.1' ACCEPTED AS E 1/4 COR. OF SEC 30 PER MB 196/67-70

○ INDICATES SET BOAT SPIKE & WASHER STAMPED LS 5529

△ INDICATES SET RAMSET NAIL IN CURB

ALBERT A. CIVIL ENGINEERS
WEBB
 ASSOCIATES
 3788 MCCRAY ST.
 RIVERSIDE CA. 92506
 (951) 686-1070



SCALE:	NTS
DATE:	05-23-2006
CHK. BY:	<i>MA</i>
DR. BY:	<i>MA</i>
W.D.:	04-092
F.B.:	2002

OFFICIAL TIE PLAT
 CITY OF RIVERSIDE
 TRACT 31237

SHEET	8
OF	15 SHEETS
FILE NO.:	03-425TIES.pro