

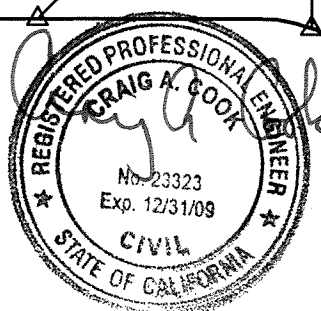
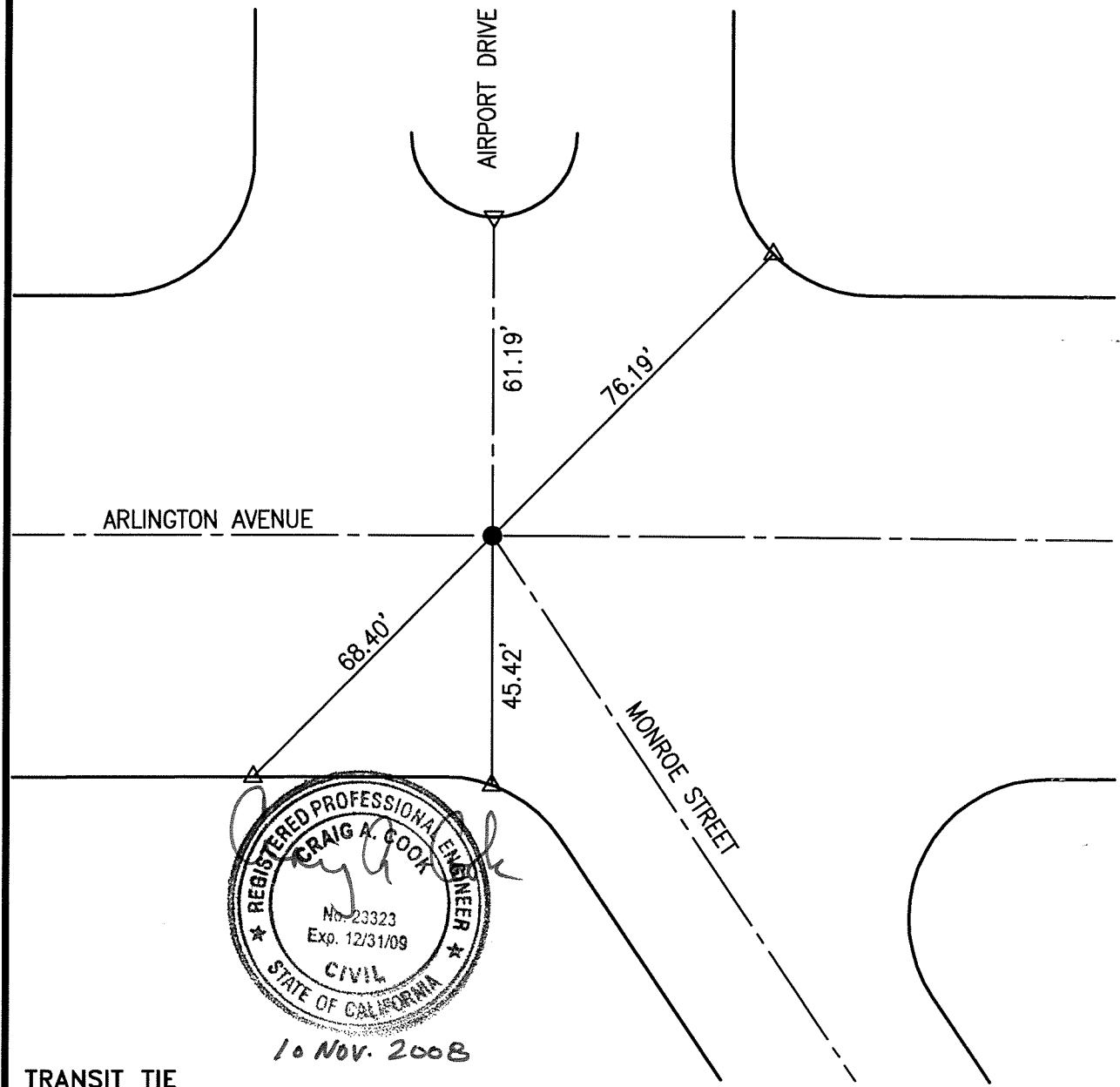
13363.TIF



X-STREET MONROE ST.

OFFICE USE ONLY

STREET ARLINGTON AVE



16 NOV. 2008

TRANSIT TIE

△ = SET "RAMSET" NAIL

● = 1" IP W/PLASTIC PLUG IN WELL, STAMPED R.C.E. 23323

THESE TIES ARE FOR THE PURPOSE OF PERPETUATING THE FOUND MONUMENTATION. NO CLAIM IS MADE AS TO THE RELATIONSHIP OF THE POINTS OR LINES SHOWN HEREON TO TRUE BOUNDARY LOCATIONS.

SCALE: 1"=30'


DATE: 09/2008

DR. BY: MAC

W.O.: 2336

F.B.:

OFFICIAL TIE PLAT
CITY OF RIVERSIDE

PREPARED BY:  **GABEL, COOK & ASSOCIATES INC.**
CIVIL ENGINEERS LAND SURVEYORS
LAND PLANNERS
125 West La Cadena Drive, Suite A, Riverside, CA 92501
Telephone (951) 788-8092 Facsimile (951) 788-5184

SHEET
1

OF 1 SHEETS

FILE NO.: