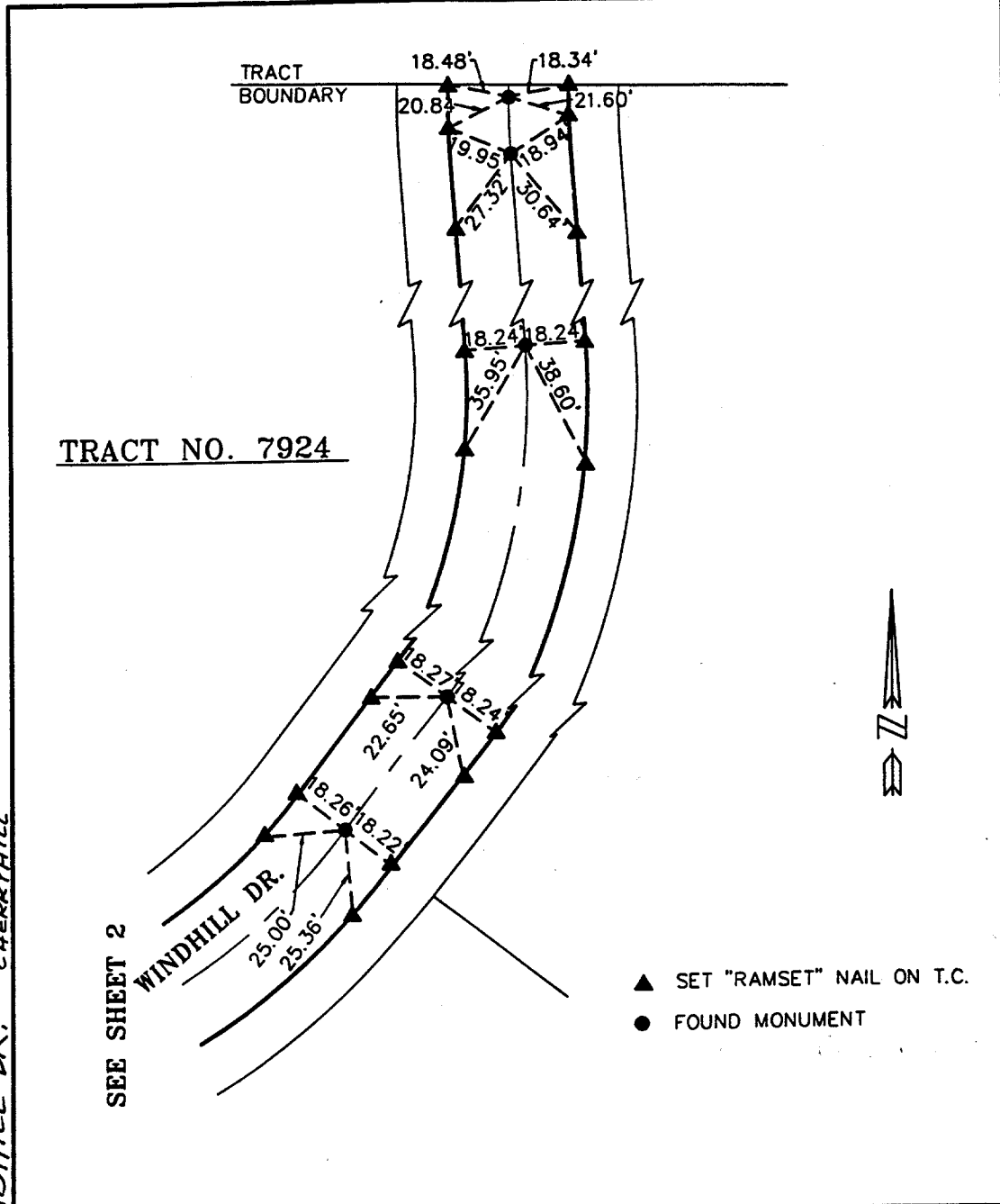


1337.TIF

WINDHILL DR. ~ N.E. OF CHERRYHILL



TRACT NO. 7924

SEE SHEET 2

WINDHILL DR. ~ N.E. OF CHERRYHILL

- ▲ SET "RAMSET" NAIL ON T.C.
- FOUND MONUMENT

SCALE: 1"=40'	<b>OFFICIAL TIE PLAT</b> CITY OF RIVERSIDE	SHEET
DATE: DEC 1995		3
DR. BY: [Signature] CK. BY: [Signature]		ALBERT A. WEBB ASSOCIATES

- ✕ FD. Ramset Nail on T/C
- FD. LD. & TK. on T/C
- FD. "C" Nail on T/C
- Set LD. & TK. on T/C

Scale:  
Date:  
Drawn by:  
W.O.:  
F.B.:

**OFFICIAL TIE PLAT**  
CITY OF RIVERSIDE

*These ties are for the purpose of perpetuating the found monumentation. No claim is made as to the relationship of the points or lines shown hereon to true boundary locations.*

Sheet 1 of 1  
File No.:

Street: CHERRYHILL  
X-Street: WINDHILL DR.  
OFFICIAL USE ONLY