

LEGEND

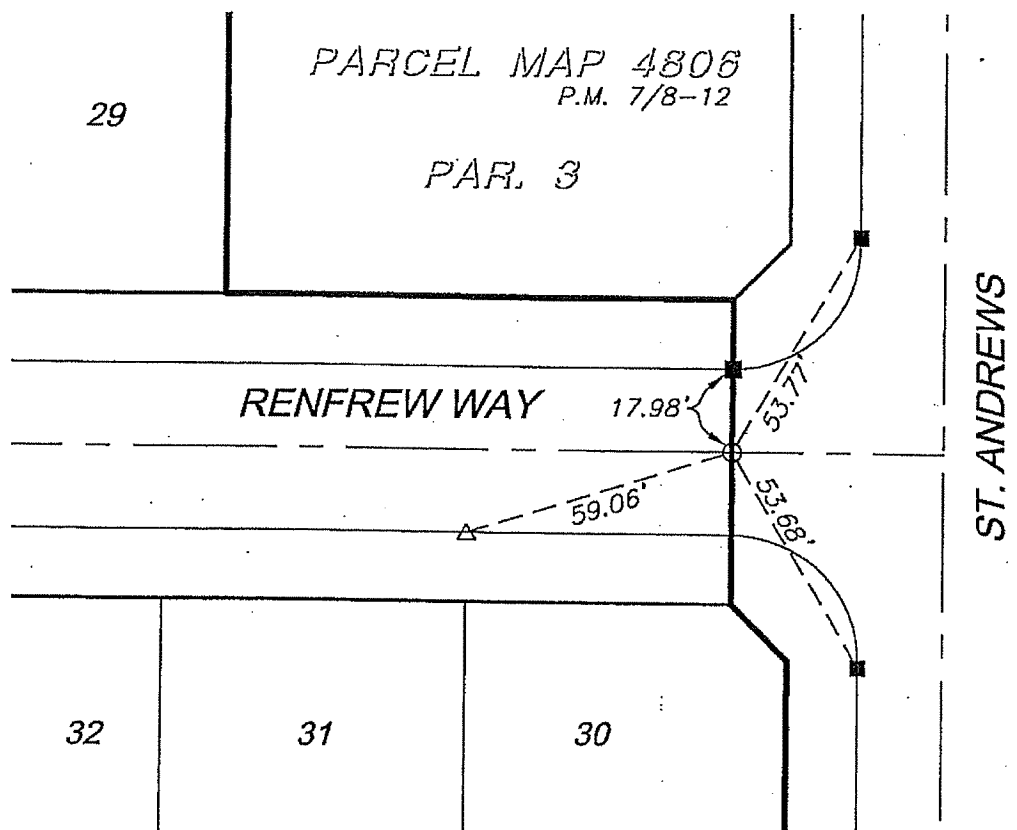
- - Set 1/2" spike and R.C.E. 17550 Tag, flush.
- - Set ramset nail on top of curb.
- △ - Set nail w/R.C.E. 17550 tag on top of curb at prolongation of side lot lines.
- - Found ramset nail.



X-STREET ST. ANDREWS

OFFICE USE ONLY

STREET RENFREW WAY



TRACT 27982-2

--- OFFICIAL TIE PLAT ---
CITY OF RIVERSIDE

SCALE: 1" = 40'

DATE: 2-19-01

DR. BY: C.E.G.

W.O.: 1120-001

PREPARED BY: **C.E.G.** Canty Engineering Group, Inc.
CIVIL ENGINEERING PLANNING SURVEYING

2020 IOWA Avenue, Suite 102, Riverside, CA 92507

P.O. Box 52050, Riverside, CA 92517

(909) 683-5234 FAX (909) 683-5301

SHEET

1

OF 6 SHEETS