

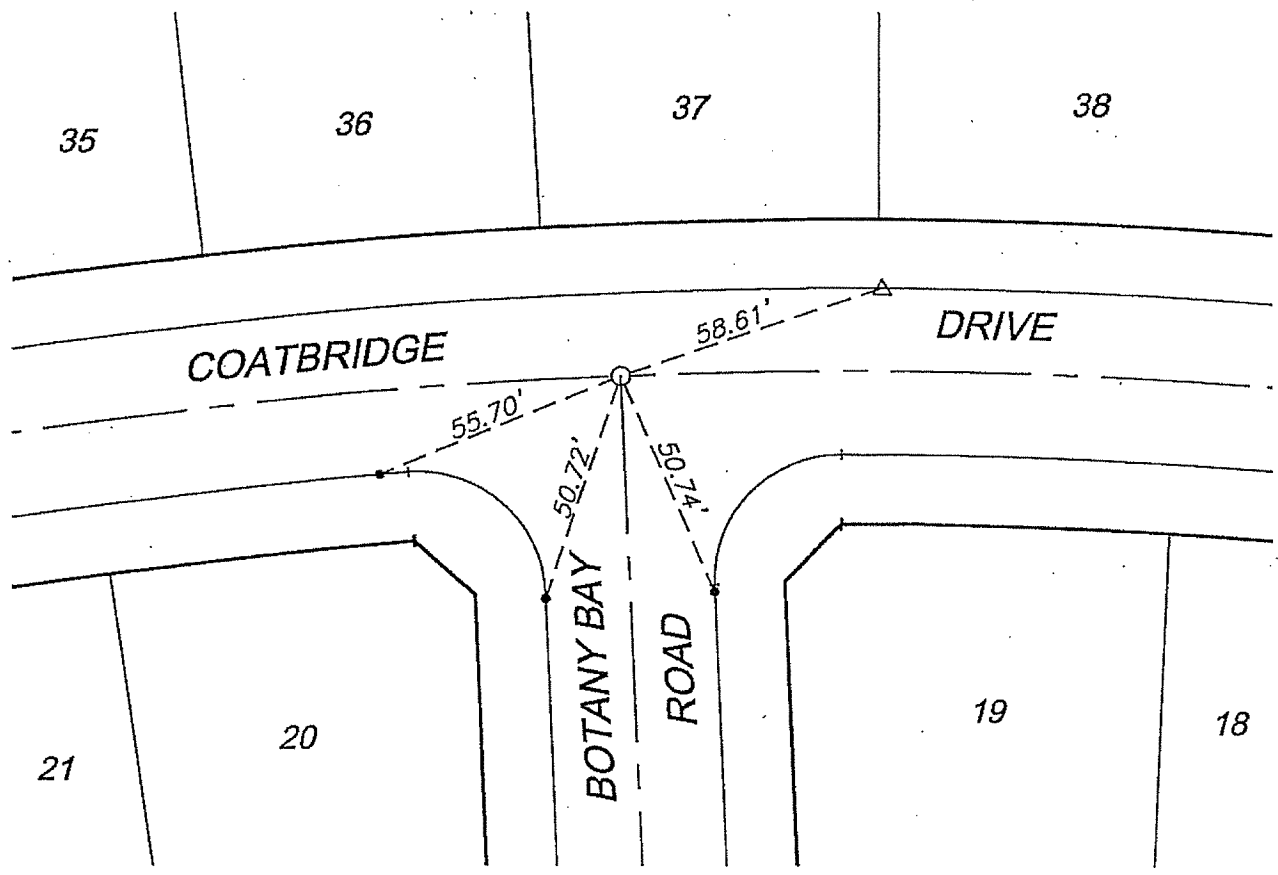
13377.TIF

LEGEND

- - Set 1/2" spike and R.C.E. 17550 Tag, flush.
- - Set ramset nail on top of curb.
- △ - Set nail w/R.C.E. 17550 tag on top of curb at prolongation of side lot lines.



STREET COATBRIDGE DR. X-STREET BOTANY BAY RD. OFFICE USE ONLY



TRACT 27982-2

--- OFFICIAL TIE PLAT ---
CITY OF RIVERSIDE

SCALE: 1" = 40'
 DATE: 2-19-01
 DR. BY: C.E.G.
 W.O.: 1120-001

PREPARED BY: **C.E.G.** *Canty Engineering Group, Inc.*
 CIVIL ENGINEERING PLANNING SURVEYING
 2020 IOWA Avenue, Suite 102, Riverside, CA 92507
 P.O. Box 52050, Riverside, CA 92517 (909) 683-5234 FAX (909) 683-5301

SHEET
2
 OF 6 SHEETS