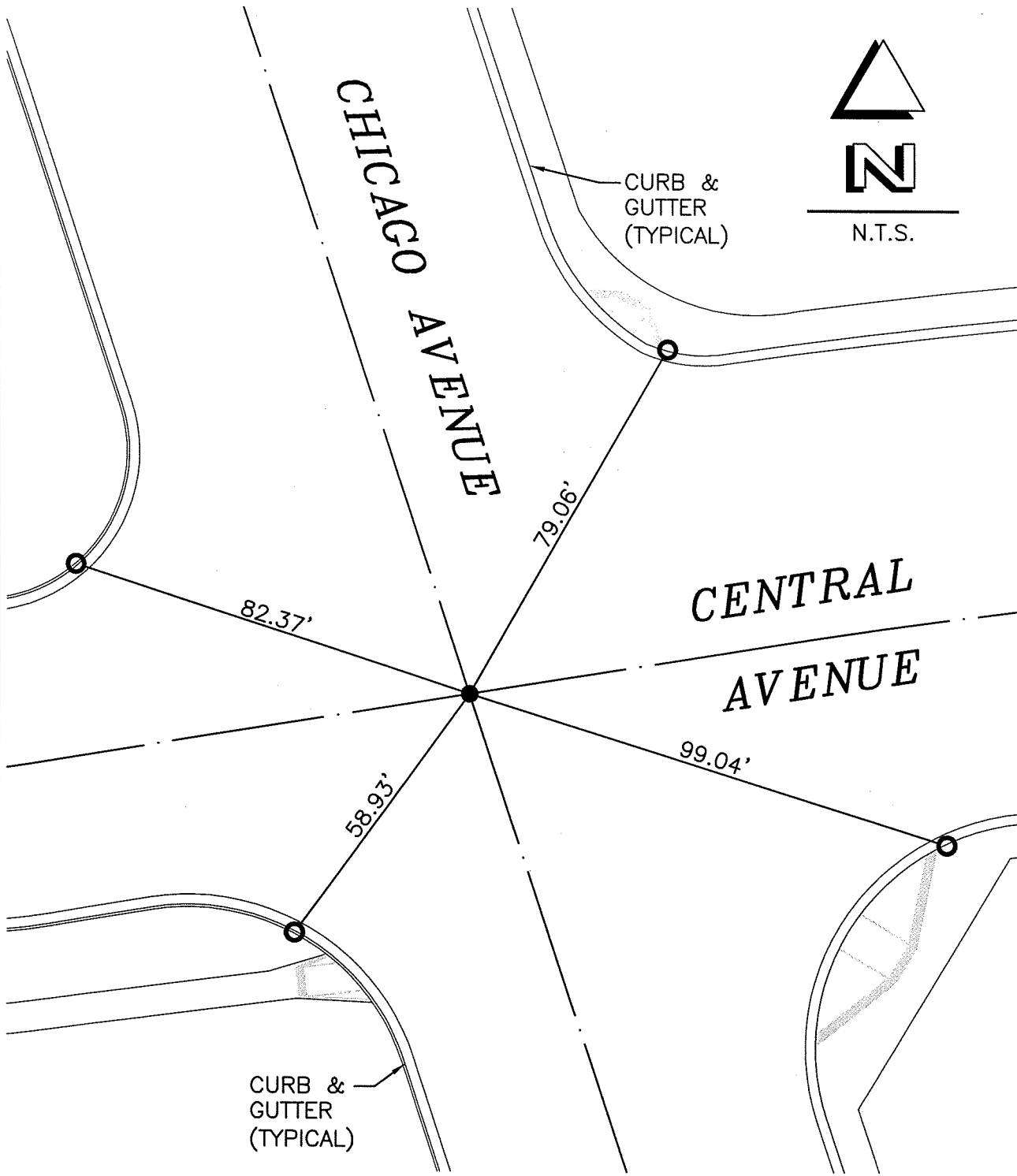


TRACT NO. 31671 CENTERLINE TIES

13407.TIF

STREET: CHICAGO AVENUE X-STREET(NEAREST): CENTRAL AVENUE
OFFICIAL USE ONLY



○ SET LEAD & TACK ON T/C

● 2" I.P. W/ NAIL & TAG, STAMPED "LS 7181", DOWN 0.4'

DRAWN BY: VGK
DATE: 11-25-09
JOB. NO.: 02-040-2
FILE: P:\TPG\02\02-040.2\02-040CLTIES.DWG

CIVIL ENGINEERS AND LAND SURVEYORS
THE PRIZM GROUP
• CYRAX 3-D LASER SCANNING
• GPS & ROBOTIC SURVEYING
• GEOMATIC ENGINEERING
• CIVIL ENGINEERING
• LAND PLANNING
310 N. COTA ST. SUITE I, CORONA, CA 92880
PHONE: (951) 737-4406 • FAX: (951) 737-4407
tpg@the-prizm-group.com

OFFICIAL TIE PLAT
THESE TIES ARE FOR THE PURPOSE OF PERPETUATING THE FOUND MONUMENTATION. NO CLAIM IS MADE AS TO THE RELATIONSHIP OF THE POINTS OF LINES SHOWN HEREON TO TRUE BOUNDARY LOCATIONS.

SHT. NO.
1
OF 1