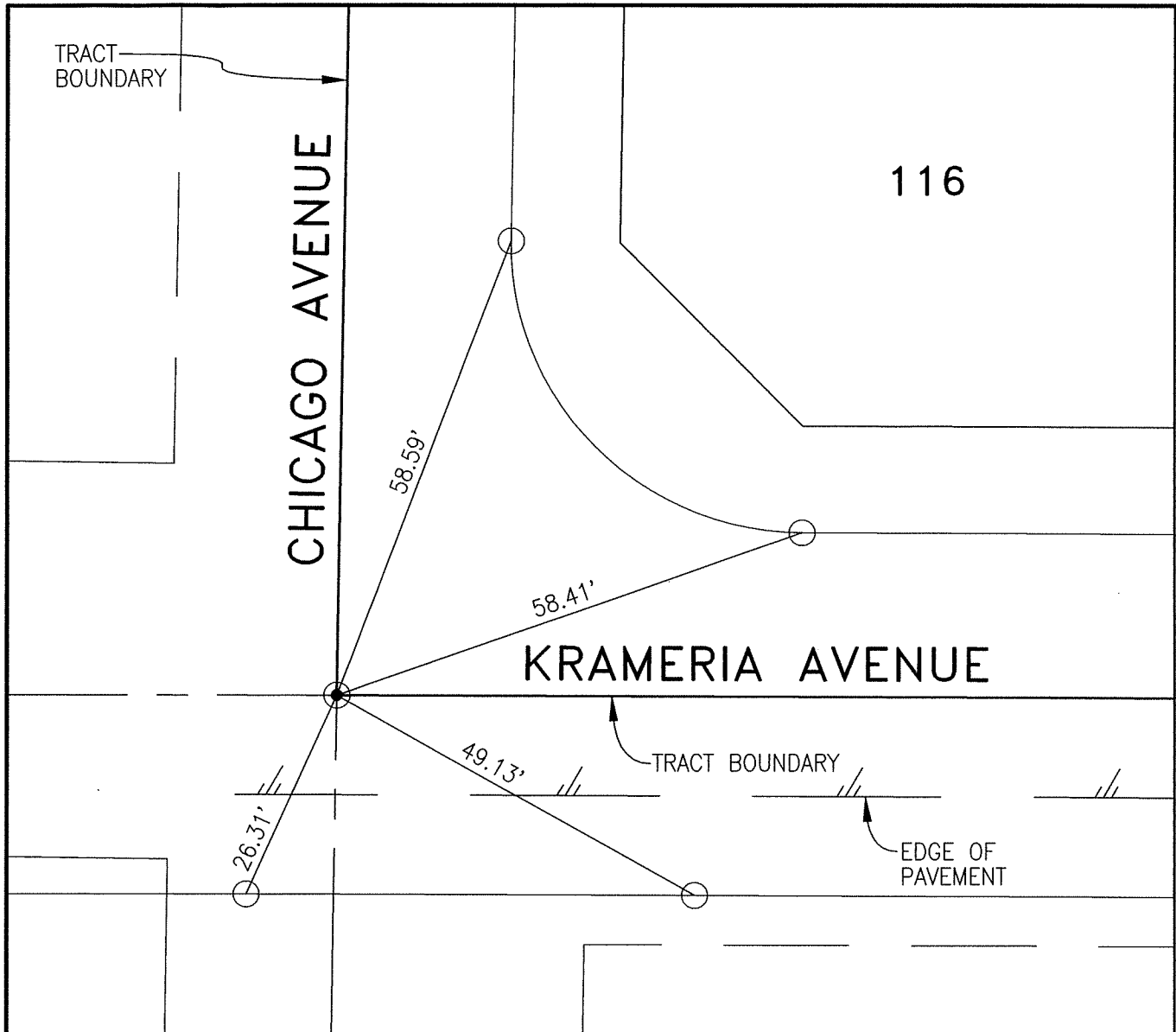


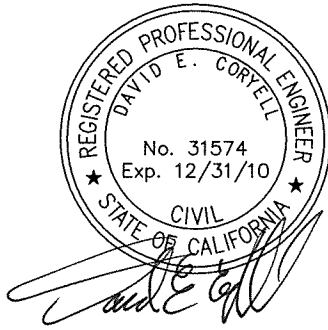
13408.TIF

STREET: KRAMERIA AVENUE
X-STREET: CHICAGO AVENUE
OFFICIAL USE ONLY



TRACT 29596
M.B. 427/25-30

- INDICATES SPIKE AND WASHER
R.C.E. 31574, SET FLUSH,
UNLESS OTHERWISE NOTED.
- INDICATES LEAD & TACK
IN TOP OF CURB
- INDICATES LEAD, TACK & TAG
R.C.E. 31574 IN TOP OF CURB



CSL Engineering, Inc.
 11651 Sterling Avenue, Suite E
 Riverside, CA 92503
 (951) 785-5122

SCALE: 1"=20'
DATE: 07-14-09
DRAWN BY: NRC
F.B.:
SEC: 30 T.3S.,R.4W

OFFICIAL TIE PLAT
CITY OF RIVERSIDE

THESE TIES ARE FOR THE PURPOSE OF PERPETUATING THE FOUND MONUMENTATION. NO CLAIM IS MADE AS THE RELATIONSHIP OF THE POINTS OR LINES SHOWN HEREON TO TRUE BOUNDARY LOCATIONS

SHEET 1 OF 1