

13418.TIF

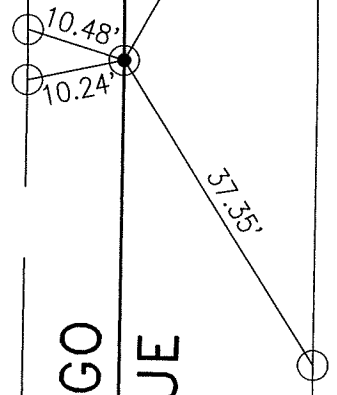
STREET: CHICAGO AVENUE
X-STREET: HAYGEN STREET
OFFICIAL USE ONLY

HAYGEN STREET

118

110

TRACT BOUNDARY
AC BERM



CHICAGO AVENUE

TRACT 29596
M.B. 427/25-30

- INDICATES SPIKE AND WASHER RCE 31574, SET FLUSH, UNLESS OTHERWISE NOTED.
- INDICATES LEAD & TACK IN TOP OF CURB / AC BERM.
- INDICATES LEAD, TACK & TAG R.C.E. 31574 IN TOP OF CURB



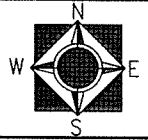
David E. Coryell

CSL Engineering, Inc.
11651 Sterling Avenue, Suite E
Riverside, CA 92503
(951) 785-5122

SCALE: 1"=20'
DATE: 07-14-09
DRAWN BY: NRC
F.B.:
SEC: 30 T.3S.,R.4W

OFFICIAL TIE PLAT
CITY OF RIVERSIDE

THESE TIES ARE FOR THE PURPOSE OF PERPETUATING THE FOUND MONUMENTATION. NO CLAIM IS MADE AS THE RELATIONSHIP OF THE POINTS OR LINES SHOWN HEREON TO TRUE BOUNDARY LOCATIONS



SHEET 1 OF 1