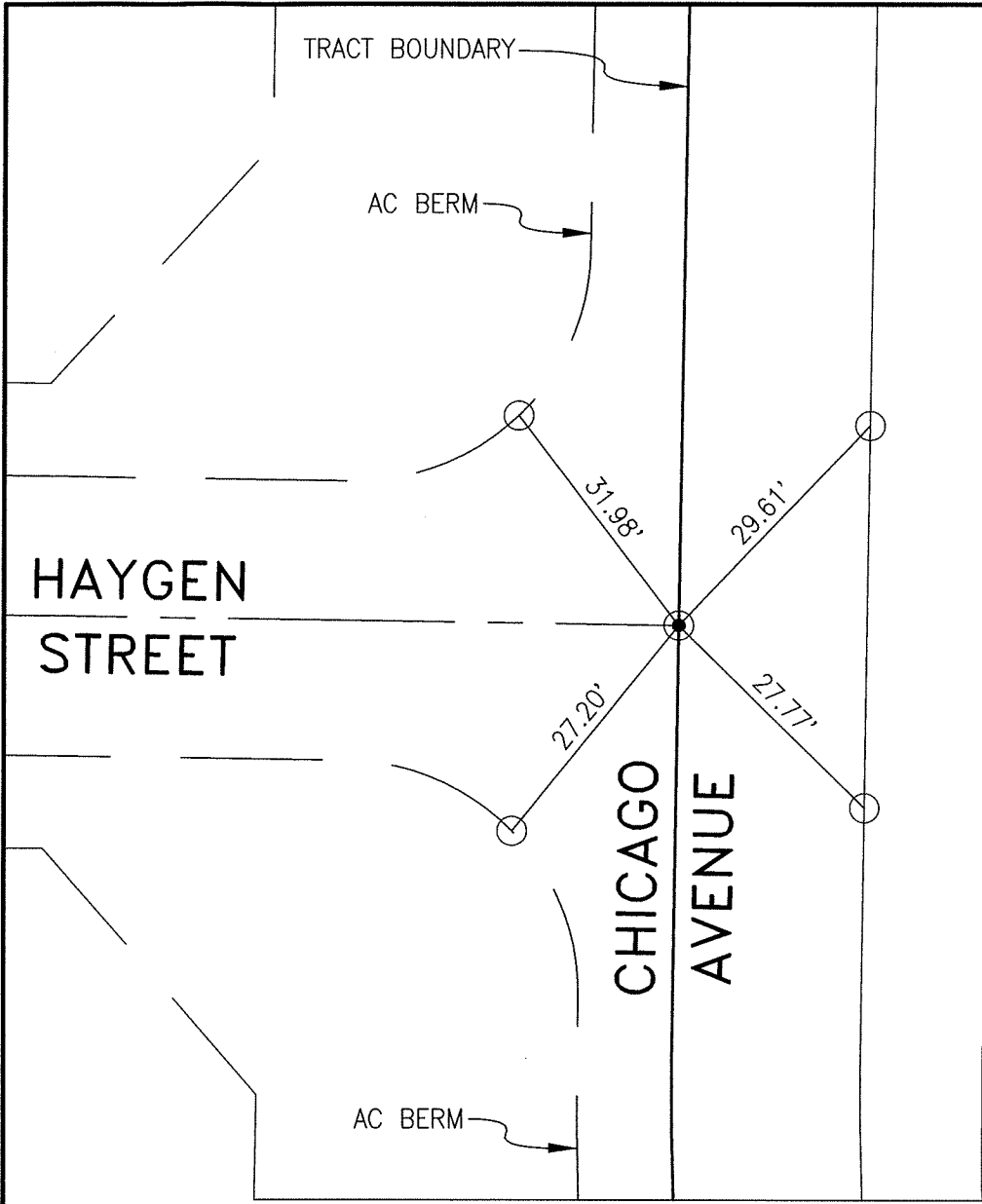


13419.TIF

STREET: CHICAGO AVENUE

X-STREET: HAYGEN STREET
OFFICIAL USE ONLY

118



TRACT 29596
M.B. 427/25-30

- INDICATES SPIKE AND WASHER
RCE 31574, SET FLUSH,
UNLESS OTHERWISE NOTED.
- INDICATES LEAD & TACK
IN TOP OF CURB / AC BERM.
- INDICATES LEAD, TACK & TAG
R.C.E. 31574 IN TOP OF CURB

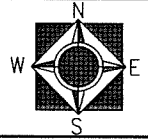


CSL Engineering, Inc.
 11651 Sterling Avenue, Suite E
 Riverside, CA 92503
 (951) 785-5122

SCALE: 1"=20'
DATE: 07-14-09
DRAWN BY: NRC
F.B.:
SEC: 30 T.3S.,R.4W

OFFICIAL TIE PLAT
CITY OF RIVERSIDE

THESE TIES ARE FOR THE PURPOSE OF PERPETUATING THE FOUND
 MONUMENTATION. NO CLAIM IS MADE AS THE RELATIONSHIP OF THE
 POINTS OR LINES SHOWN HEREON TO TRUE BOUNDARY LOCATIONS



SHEET 1 OF 1