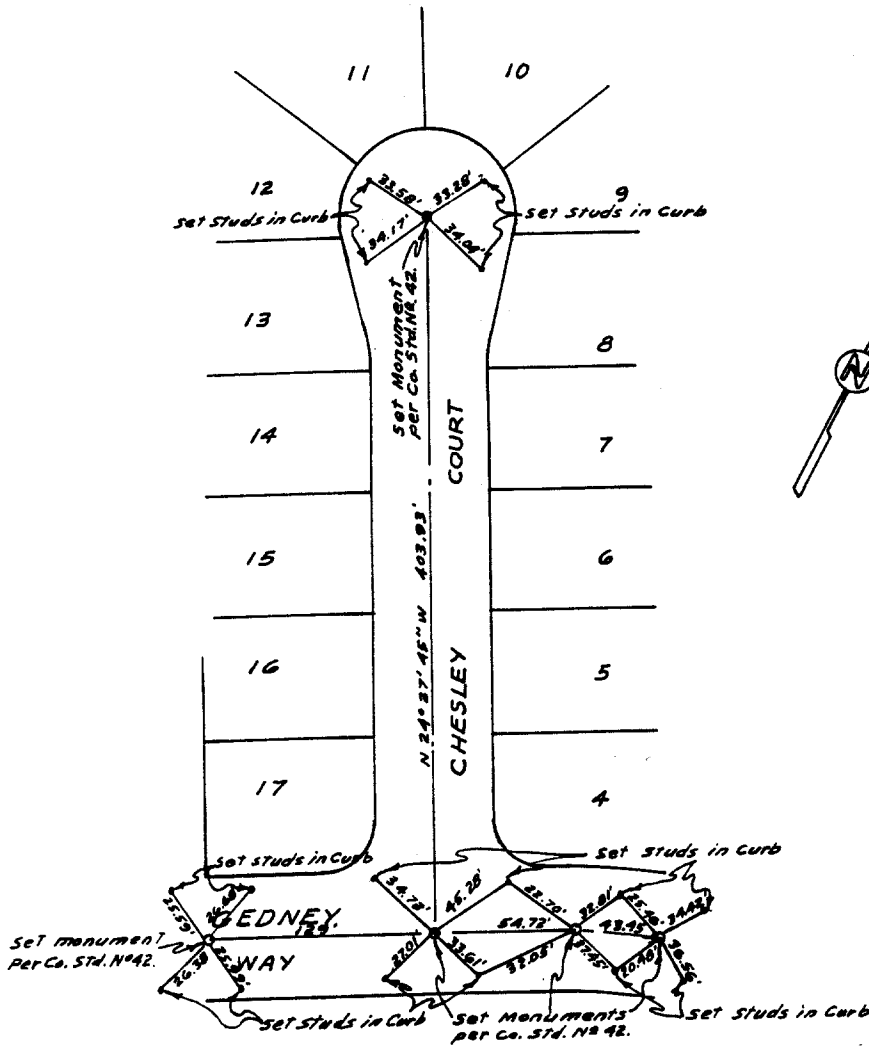


TRACT N^o 2281

Sec. 10, T.3S, R.6W, of Rancho La Sierra

1342.TIF



CHESLEY CT.
@ Gedney way

DRAWN BY B.E.L.
DATE 10/9/62

A.A. WEBB
F.B. 489/12
W.O. 61-198

JAN 1969 FIELD CHECK - GPH.

- ✕ FD. Ramset Nail on T/C
- FD. "C" Nail on T/C

- FD. LD. & TK. on T/C
- Set LD. & TK. on T/C

Street: CHESLEY CT
X-Street: GEDNEY WAY
OFFICIAL USE ONLY

Scale:
Date:
Drawn by:
W.O.:
F.B.:

OFFICIAL TIE PLAT CITY OF RIVERSIDE

These ties are for the purpose of perpetuating the found monumentation. No claim is made as to the relationship of the points or lines shown hereon to true boundary locations.

Sheet 1 of 1
File No.: