

13422.TIF

Street:

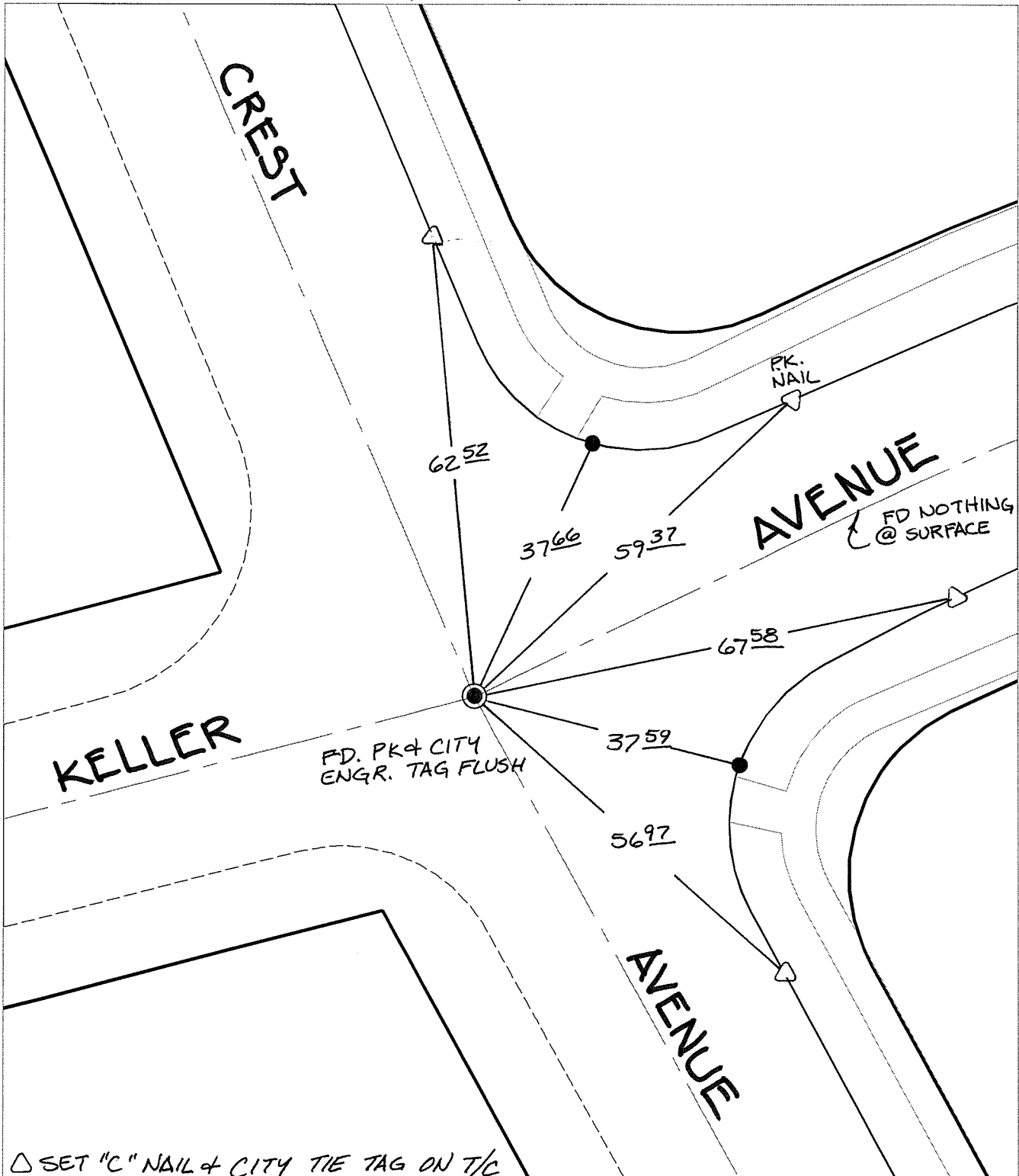
CREST AVENUE

X-Street:

KELLER AVENUE

OFFICIAL USE ONLY

SWING TIES



△ SET "C" NAIL & CITY TIE TAG ON T/C

- × FD. Ramset Nail on T/C
- FD. LD. & TK. on T/C
- FD. "C" Nail on T/C
- Set LD. & TK. on T/C

P.K. and City Engineer tag to be set @ surface after street construction is complete. (If possible)

Scale: 1" = 20'

Date: 05/01/09

Drawn by: pw

F.B.:

TR-Sec: T3SR6W-2

# OFFICIAL TIE PLAT

## CITY OF RIVERSIDE

*These ties are for the purpose of perpetuating the found monumentation. No claim is made as to the relationship of the points or lines shown hereon to true boundary locations.*



Sheet 1 of 1

Cadme MB: 64-2